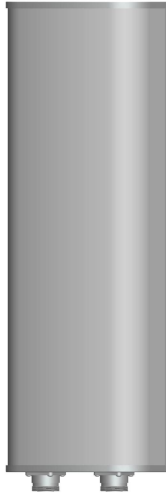




Directional Sector Antenna



- Model: FTD-1718SH15DP65A
- Name: Directional Sector Antenna
- Freq.Range: 1710 to 1880 MHz
- Communications system:
GSM1800/FDD,
Wireless access communication system
- Application scenario: Point to multipoint,
Repeater antenna, Base station antenna,
Long-distance communication,
Wireless data and image transmission,
Outdoor signal directional coverage

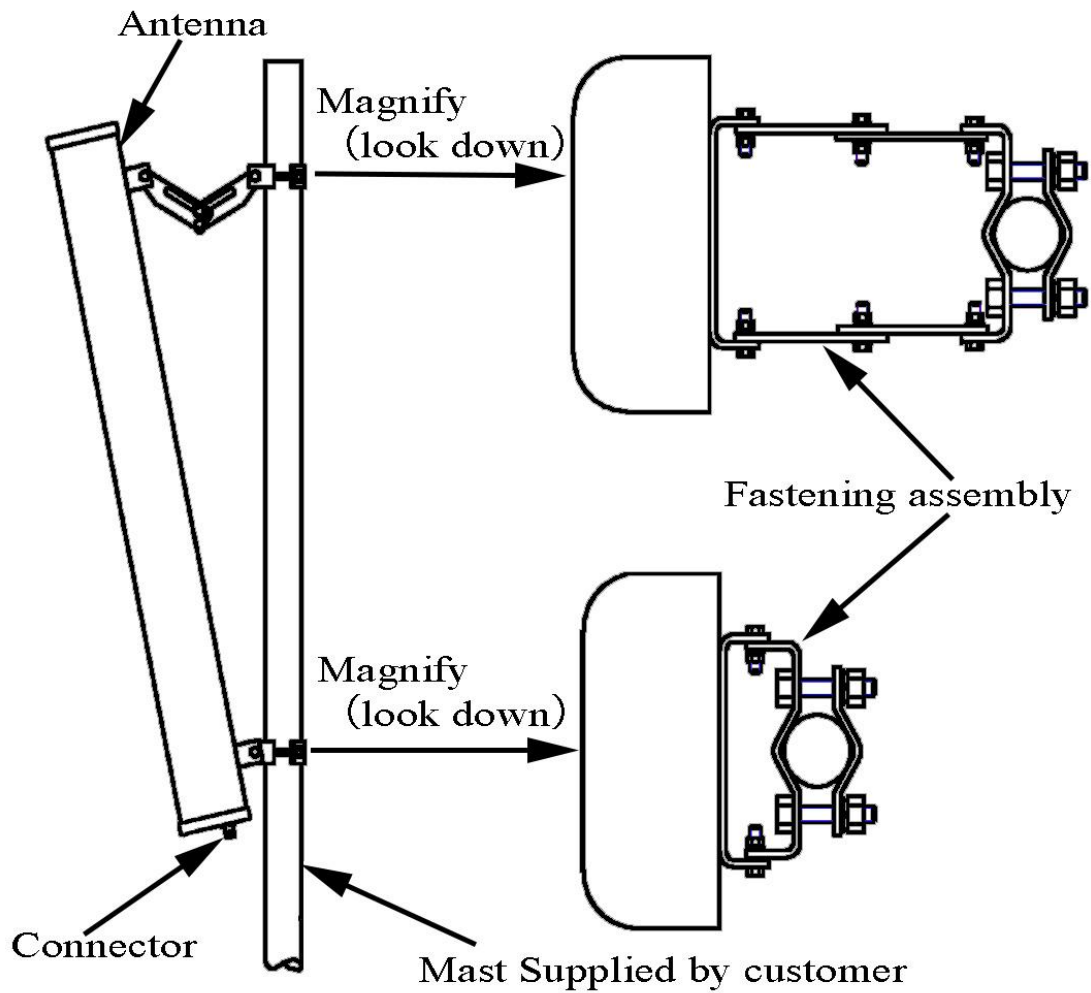
Tip: Pictures are for reference only.
Please refer to physical objects.

Electrical Specifications	
Freq.Range-MHz	1710 to 1880
Polarization	±45°
Gain-dBi	2×15
Beam Electrical Downtilt-°	0
Half-power beam width-°	H:65 E:15
First upper sidelobe suppression	N/A
F/B-dB	≥ 25
Cross-pol-isolation-dB	≥28
Cross-pol. Discrimination_XPD-dB	≥15 (±60°≥10)
Impedance-Ω	50
VSWR	≤ 1.5
Third-order passive intermodulation-dBc	≤-150dBc (2×43dBm)
Max.Power-W	300
Lightning Protection	DC Grounded

Mechanical Specifications	
Connector	2×N female
Connector Position	Bottom
Dimension-MM	About 580×160×80
Weight-KG	About 3.3
Radome material	UPVC
Radome color	Gray
Mechanical tilt-°	0 to 15
Operational Temperature-°C	-40 to 60
Storage Temperature-°C	-55 to 85
Relative Humidity-%	5 to 95
Rated Wind Velocity-M/S	60
Mounting way	Mast 【Φ50 to 75】



Installation Demonstrations



Typical pattern

