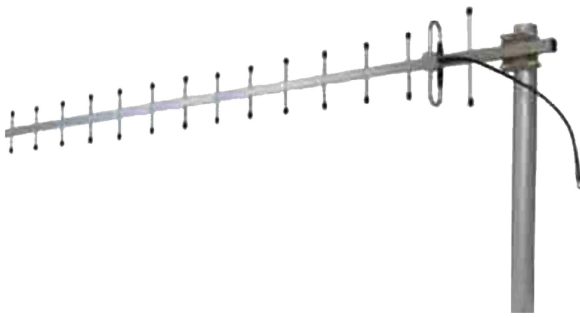




Directional Yagi Antenna



- Model: FTD-1921BM13V15A
- Name: Directional Yagi Antenna
- Freq.Range: 1920 to 2170 MHz
- Communications system:
CDMA2000/WCDMA,
FDD/TD-SCDMA
- Application scenario:
Point to multipoint, Client antenna,
Long-distance communication

Tip: Pictures are for reference only.
Please refer to physical objects.

Electrical Specifications	
Freq.Range-MHz	1920 to 2170
Bandwidth-MHz	250
Unit	15
Polarization	Vertical or Horizontal
Gain-dBi	13
Horizontal Beamwidth-°	30
Vertical Beamwidth-°	30
F/B-dB	≥ 18
Impedance-Ω	50
VSWR	≤ 1.5
Max.Power-W	100

Mechanical Specifications	
Connector	N female or customized
Connector Position	Cable outgoing
Length-CM	About 80
Weight-KG	About 0.55
Radome material	Aluminium alloy
Operational Temperature-°C	-40 to 60
Storage Temperature-°C	-55 to 85
Relative Humidity-%	5 to 95
Rated Wind Velocity-M/S	60
Mounting way	Mast
Mast Diameter-MM	Φ40 to 50



Installation Demonstrations

