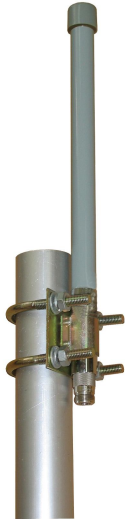




Omnidirectional Fiberglass Antenna



- Model: FTQ-1921QX06A
- Name: Omnidirectional Fiberglass Antenna
- Freq.Range: 1920 to 2170 MHz
- Communications system:
CDMA2000/WCDMA/TD-SCDMA/FDD
- Application scenario:
Point to multipoint,
Base station antenna,
Wireless data and image transmission,
Outdoor signal omnidirectional coverage

Tip: Pictures are for reference only.
Please refer to physical objects.

Electrical Specifications

Freq.Range-MHz	1920 to 2170
Bandwidth-MHz	250
Polarization	Vertical
Gain-dBi	6
Horizontal Beamwidth-°	360
Vertical Beamwidth-°	25
Impedance-Ω	50
VSWR	≤ 1.8
Max.Power-W	50

Mechanical Specifications

Connector	N female
Connector Position	Bottom
Dimension-MM	About Φ20×400
Weight-KG	About 0.6
Radome material	Fiberglass
Radome color	Gray
Operational Temperature-°C	-40 to 60
Storage Temperature-°C	-55 to 85
Relative Humidity-%	5 to 95
Rated Wind Velocity-M/S	60
Mounting way	Mast
Mast Diameter-MM	Φ40 to 50



Installation Demonstrations

