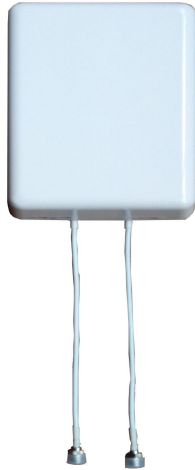




Directional Wall Mounted Antenna



- Model: FTD-1727BG09DP65A
- Name: Directional Wall Mounted Antenna
- Freq.Range: 1710 to 2700 MHz
- Communications system: WLAN/WIFI/ISM, TD-SCDMA/WCDMA/TDD&FDD-LTE, Indoor distributed communication system
- Application scenario:
Indoor signal directional coverage,
Wireless data and image transmission

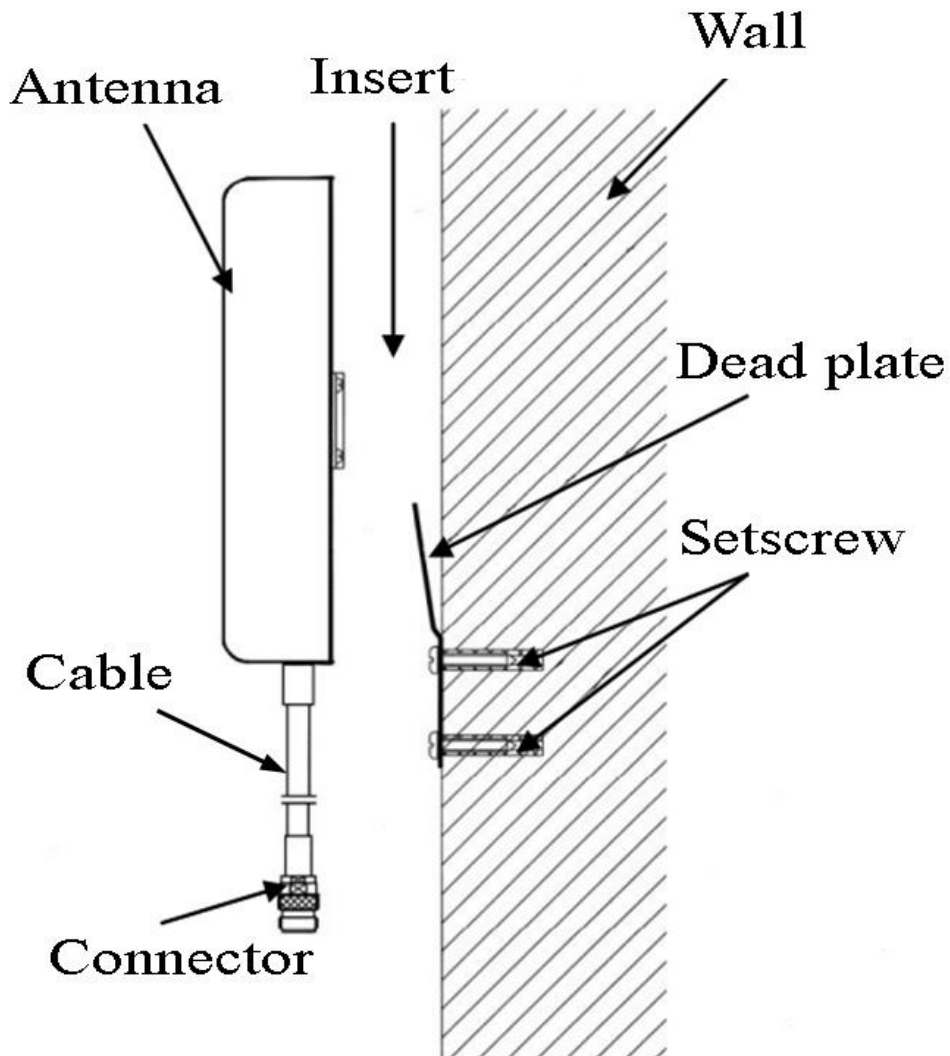
Tip: Pictures are for reference only.
Please refer to physical objects.

Electrical Specifications	
Freq.Range-MHz	1710 to 2700
Bandwidth-MHz	990
Polarization	$\pm 45^\circ$
Gain-dBi	8.5 \pm 1
Horizontal Beamwidth- $^\circ$	65 \pm 10
Vertical Beamwidth- $^\circ$	55 \pm 10
Cross-pol-isolation- $^\circ$	≥ 22
F/B-dB	≥ 20
Third-order passive intermodulation	≤ -85 (@2 \times 33dBm)
Impedance- Ω	50
VSWR	≤ 1.5
Max.Power-W	50

Mechanical Specifications	
Connector	2 \times N female or Customized
Connector Position	Cable outgoing
Cable Length-CM	30CM or Customized
Dimension-M	About 165 \times 155 \times 40
Weight-KG	About 0.4
Radome material	ABS
Radome color	White
Operational Temperature- $^\circ$ C	-40 to 60
Storage Temperature- $^\circ$ C	-55 to 85
Relative Humidity-%	5 to 95
Mounting way	Wall mounting



Installation Demonstrations



Typical pattern

