



# Directional Flat Panel Antenna



- Model: FTD-1727PB14V30
- Name: Directional Flat Panel Antenna
- Freq.Range: 1710 to 2170 / 2300 to 2690 MHz
- Communications system: WIFI/WLAN/ISM, TD-SCDMA/WCDMA/TDD&FDD-LTE, Mobile communication wireless network optimization
- Application scenario: Point to point, Point to multipoint, Repeater antenna, Wireless data and image transmission, Outdoor signal directional coverage, Cell Signal Coverage

Tip: Pictures are for reference only.  
Please refer to physical objects.

## Electrical Specifications

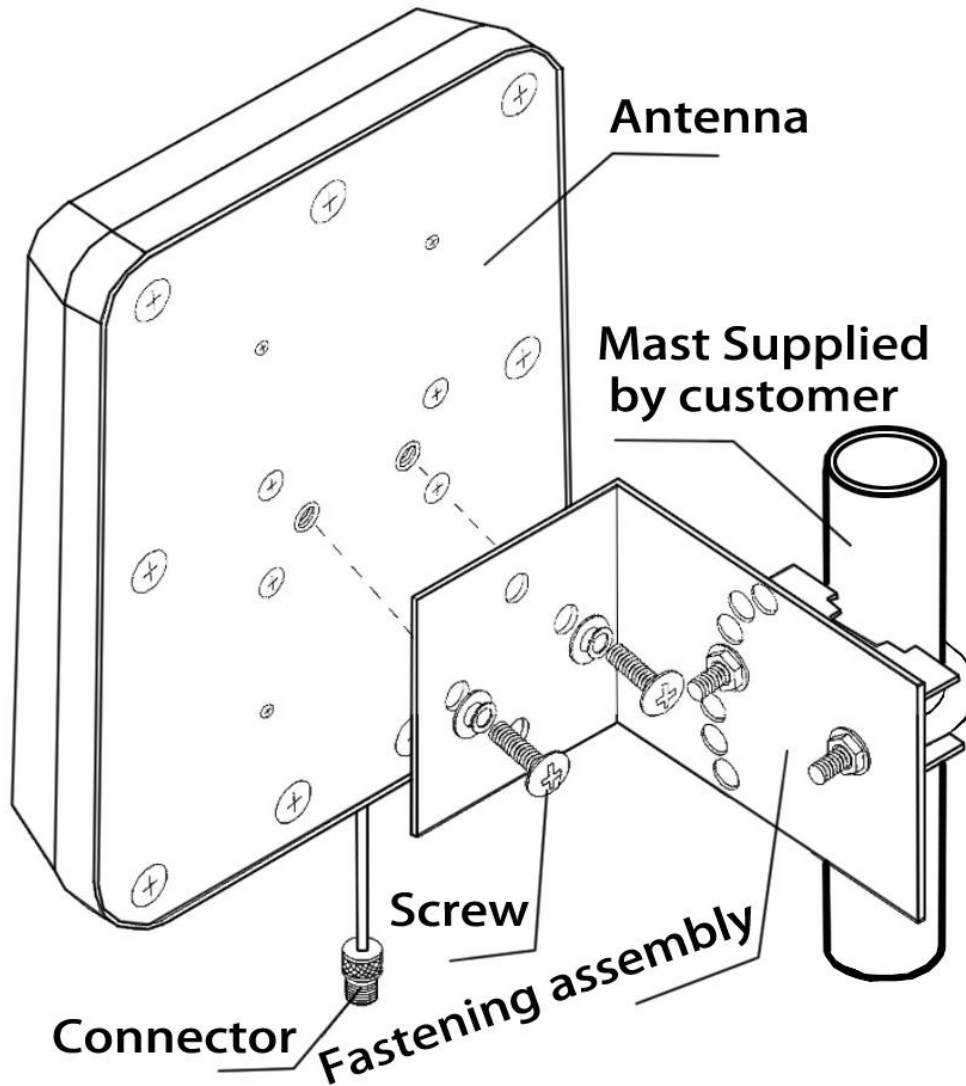
Freq.Range-MHz	1710 to 2170	2300 to 2690
Bandwidth-MHz	460	390
Polarization	Vertical	
Gain-dBi	13.5	14
Beam Electrical Downtilt-°	0	
Half-power beam width-°	H:35 E:35	H:30 E:30
F/B-dB	≥ 25	
Impedance-Ω	50	
VSWR	≤ 1.7	
Max.Power-W	50	
Lightning Protection	DC Grounded	

## Mechanical Specifications

Connector	N female or Customized
Connector Position	Cable outgoing
Dimension-MM	About 190×190×40
Weight-KG	About 1
Radome material	ABS
Radome color	White
Mechanical tilt-°	0 to 30
Operational Temperature-°C	-40 to 60
Storage Temperature-°C	-55 to 85
Relative Humidity-%	5 to 95
Rated Wind Velocity-M/S	60
Mounting way	Mast
Mast Diameter-MM	Φ35 to 50



## Installation Demonstrations



## Typical pattern

