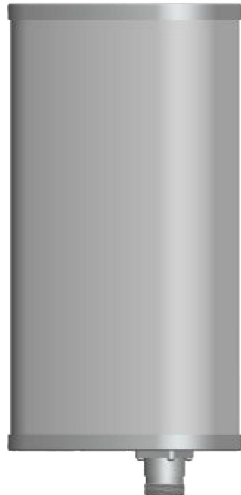




Directional Sector Antenna



- Model: FTD-1727SH13VP65A
- Name: Directional Sector Antenna
- Freq.Range: 1710 to 2200 / 2200 to 2690 MHz
- Communications system: WIFI/WLAN/ISM, TD-SCDMA/WCDMA/TDD&FDD-LTE, Wireless cellular Communication System, Broadband digital trunking private network
- Application scenario: Point to multipoint, Repeater antenna, Base station antenna, Outdoor signal directional coverage

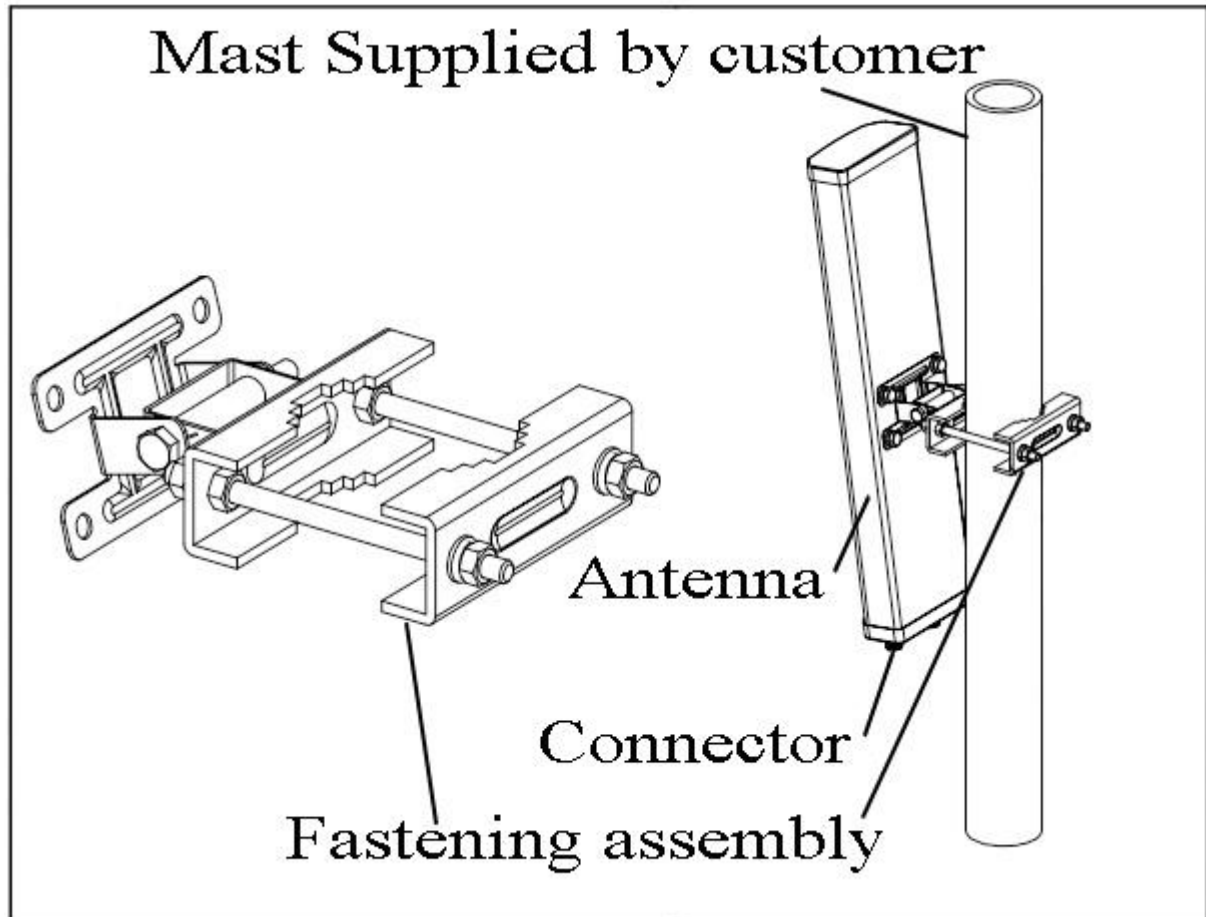
Tip: Pictures are for reference only.
Please refer to physical objects.

| Electrical Specifications | | |
|---|---------------------|--------------|
| Freq.Range-MHz | 1710 to 2200 | 2200 to 2690 |
| Bandwidth-MHz | 490 | 490 |
| Polarization | Vertical | |
| Gain-dBi | 12.5 | 13 |
| Beam Electrical Downtilt-° | 0 | |
| Half-power beam width-° | H:68 E:25 | H:65 E:20 |
| First upper sidelobe suppression | N/A | |
| F/B-dB | ≥ 23 | |
| Impedance-Ω | 50 | |
| VSWR | ≤ 1.5 | |
| Third-order passive intermodulation-dBc | ≤ -150dBc (2×43dBm) | |
| Max.Power-W | 300 | |
| Lightning Protection | DC Grounded | |

| Mechanical Specifications | |
|----------------------------|------------------|
| Connector | N female |
| Connector Position | Bottom |
| Dimension-MM | About 350×160×80 |
| Weight-KG | About 3 |
| Radome material | UPVC |
| Radome color | Gray |
| Mechanical tilt-° | 0 to 15 |
| Operational Temperature-°C | -40 to 60 |
| Storage Temperature-°C | -55 to 85 |
| Relative Humidity-% | 5 to 95 |
| Rated Wind Velocity-M/S | 60 |
| Mounting way | Mast |
| Mast Diameter-MM | Φ50 to 75 |

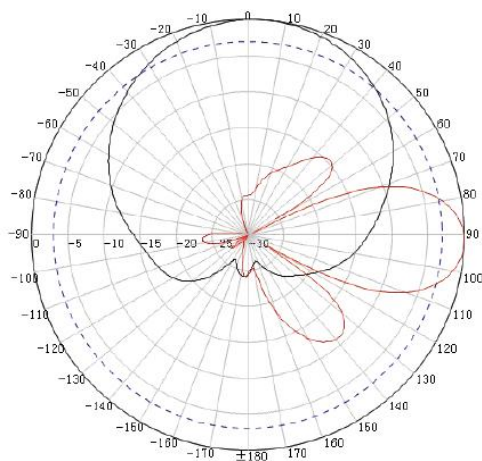


Installation Demonstrations



Typical pattern

1710 to 2200MHz



2200 to 2690MHz

