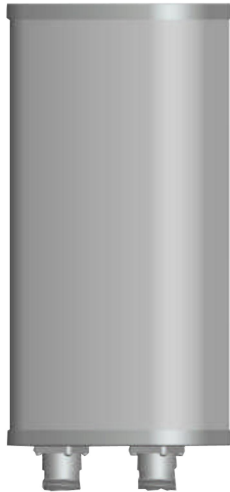




# Directional Sector Antenna



- Model: FTD-1727SH12DP65A
- Name: Directional Sector Antenna
- Freq.Range: 1710 to 2200 / 2200 to 2690 MHz
- Communications system: WIFI/WLAN/ISM, TD-SCDMA/WCDMA/TDD&FDD-LTE, Wireless cellular Communication System, Broadband digital trunking private network
- Application scenario: Point to multipoint, Repeater antenna, Base station antenna, Outdoor signal directional coverage

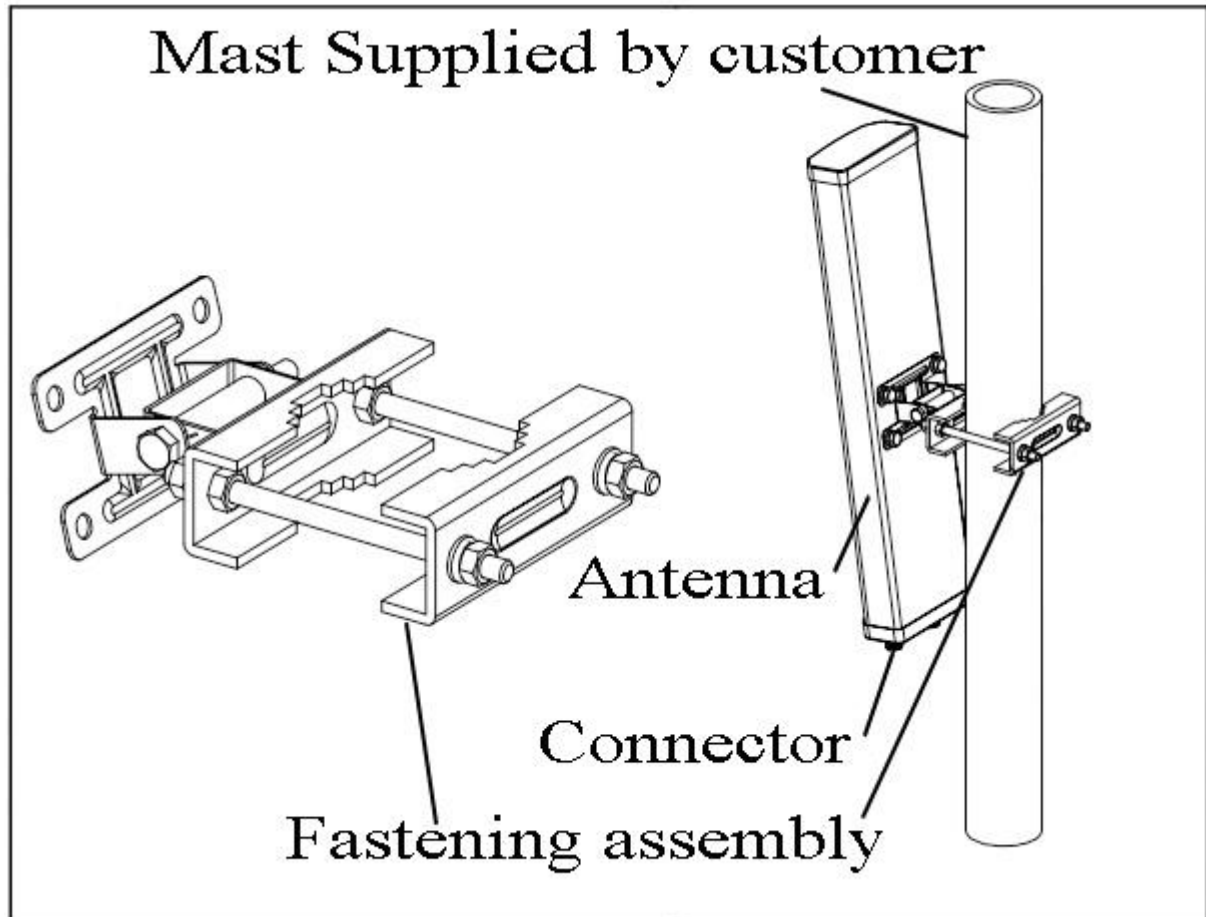
Tip: Pictures are for reference only.  
Please refer to physical objects.

Electrical Specifications		
Freq.Range-MHz	1710 to 2200	2200 to 2690
Polarization	±45°	
Gain-dBi	2×11.5	2×12
Beam Electrical Downtilt-°	0	
Half-power beam width-°	H:68 E:31	H:65 E:30
First upper sidelobe suppression	N/A	
Cross-pol-isolation-°	≥ 25	
F/B-dB	≥ 25	
Impedance-Ω	50	
VSWR	≤ 1.5	
Cross-pol. Discrimination_XPD-dB	≥15 (±60°≥10)	
Third-order passive intermodulation-dBc	≤-150dBc (2×43dBm)	
Max.Power-W	300	
Lightning Protection	DC Grounded	

Mechanical Specifications	
Connector	2×N female
Connector Position	Bottom
Dimension-MM	About 250×160×80
Weight-KG	About 2
Radome material	UPVC
Radome color	Gray
Mechanical tilt-°	0 to 15
Operational Temperature-°C	-40 to 60
Storage Temperature-°C	-55 to 85
Relative Humidity-%	5 to 95
Rated Wind Velocity-M/S	60
Mounting way	Mast 【Φ50 to 75】



## Installation Demonstrations



## Typical pattern

1710 to 2200MHz



2200 to 2690MHz

