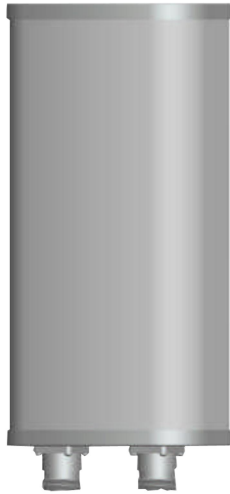




Directional Sector Antenna



Tip: Pictures are for reference only.
Please refer to physical objects.

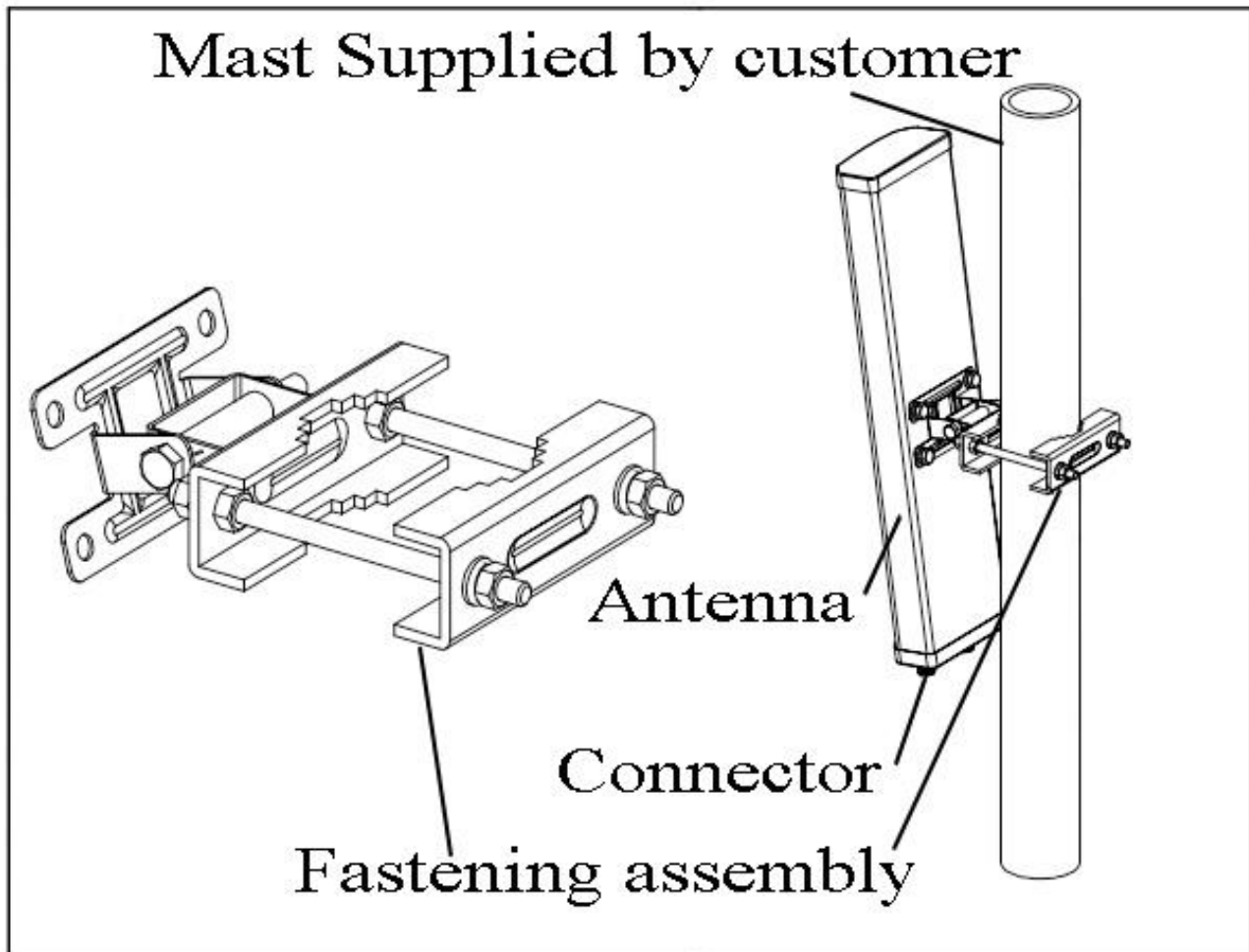
- Model: FTD-1738SH1212DP65A
- Name: Directional Sector Antenna
- Freq.Range: 1710 to 2690 / 3300 to 3800 MHz
- Communications system: WLAN/WIFI/ISM, CDMA/EGSM/DCS1800/MMDS/5G, TD-SCDMA/WCDMA/TDD&FDD-LTE, Wireless access communication system, Wireless cellular Communication System, Public wireless hotspot coverage
- Application scenario: Point to multipoint, Repeater antenna, Base station antenna, Wireless data and image transmission, Outdoor signal directional coverage

Electrical Specifications				
Freq.Range-MHz	1710 to 2690		3300 to 3800	
Bandwidth-MHz	980		500	
Polarization	±45°			
Gain-dBi	11.5		12	
Beam Electrical Downtilt-°	0			
Half-power beam width-°	H:65	E:30	H:60	E:25
First upper sidelobe suppression-dB	N/A			
Third-order passive intermodulation-dBc	≤-150dBc (2×43dBm)			
Cross-pol-isolation-dB	≥28			
F/B-dB	≥ 25			
Impedance-Ω	50			
VSWR	≤ 2.0			
Max.Power-W	100			
Lightning Protection	DC Grounded			

Mechanical Specifications	
Connector	2×N female
Connector Position	Bottom
Dimension-MM	About 250×160×80
Weight-KG	About 2.5
Radome material	UPVC
Radome color	Gray
Mechanical tilt-°	0 to 15
Operational Temperature-°C	-40 to 60
Storage Temperature-°C	-55 to 85
Relative Humidity-%	5 to 95
Rated Wind Velocity-M/S	60
Mounting way	Mast 【Φ35 to 75】

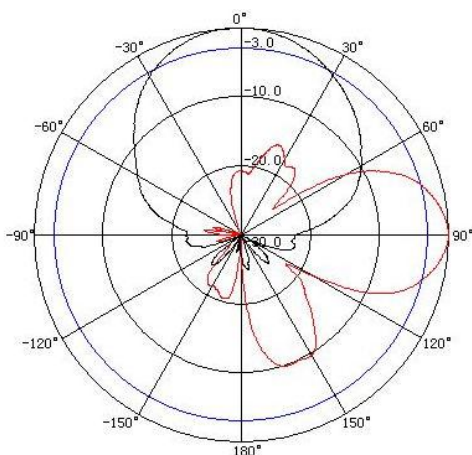


Installation Demonstrations



Typical pattern

1710 to 2690MHz



3300 to 3800MHz

