



Directional Flat Panel Antenna



- Model: FTD-1718PB09DP60A
- Name: Directional Flat Panel Antenna
- Freq.Range: 1785 to 1805 MHz
- Communications system:
 - Broadband digital trunking private network,
 - Wireless access communication system
- Application scenario:
 - Point to point, Point to multipoint,
 - Wireless data and image transmission,
 - Outdoor signal directional coverage

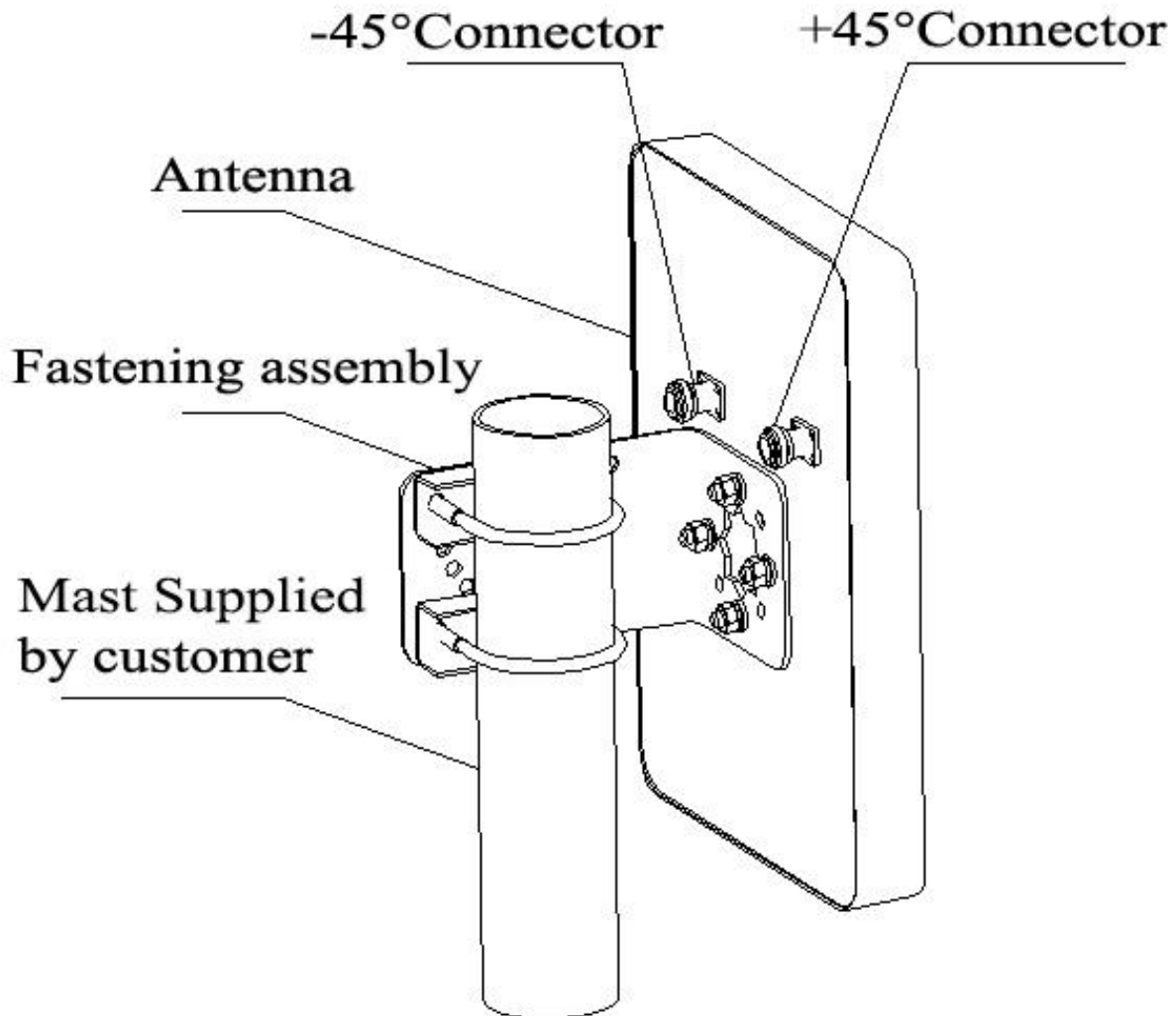
Tip: Pictures are for reference only.
Please refer to physical objects.

Electrical Specifications	
Freq.Range-MHz	1785 to 1805
Bandwidth-MHz	20
Polarization	±45°
Gain-dBi	9
Beam Electrical Downtilt-°	0
Half-power beam width-°	H:55±5 E:55±5
Cross-pol-isolation-dB	≥23
F/B-dB	≥ 20
Impedance-Ω	50
VSWR	≤ 1.5
Max.Power-W	50
Lightning Protection	DC Grounded

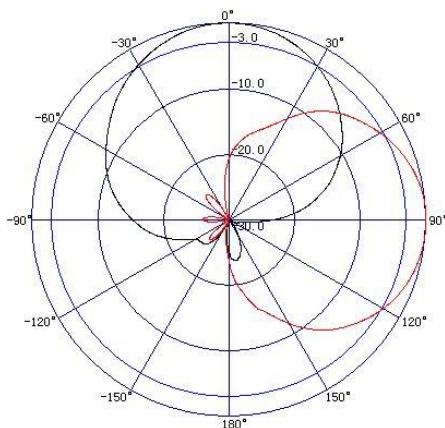
Mechanical Specifications	
Connector	2×N female
Connector Position	Back
Dimension-MM	About 190×190×40
Weight-KG	About 1
Radome material	ABS
Radome color	White
Mechanical tilt-°	0 to 30
Operational Temperature-°C	-40 to 60
Storage Temperature-°C	-55 to 85
Relative Humidity-%	5 to 95
Rated Wind Velocity-M/S	60
Mounting way	Mast
Mast Diameter-MM	Φ35 to 50



Installation Demonstrations



Typical pattern



Connector

