



Directional Flat Panel Antenna



- Model: FTD-1718PB09DP60AL
- Name: Directional Flat Panel Antenna
- Freq.Range: 1785 to 1805 MHz
- Communications system:
 - Broadband digital trunking private network,
 - Wireless access communication system
- Application scenario:
 - Point to point, Point to multipoint,
 - Wireless data and image transmission,
 - Outdoor signal directional coverage

Tip: Pictures are for reference only.
Please refer to physical objects.

Electrical Specifications

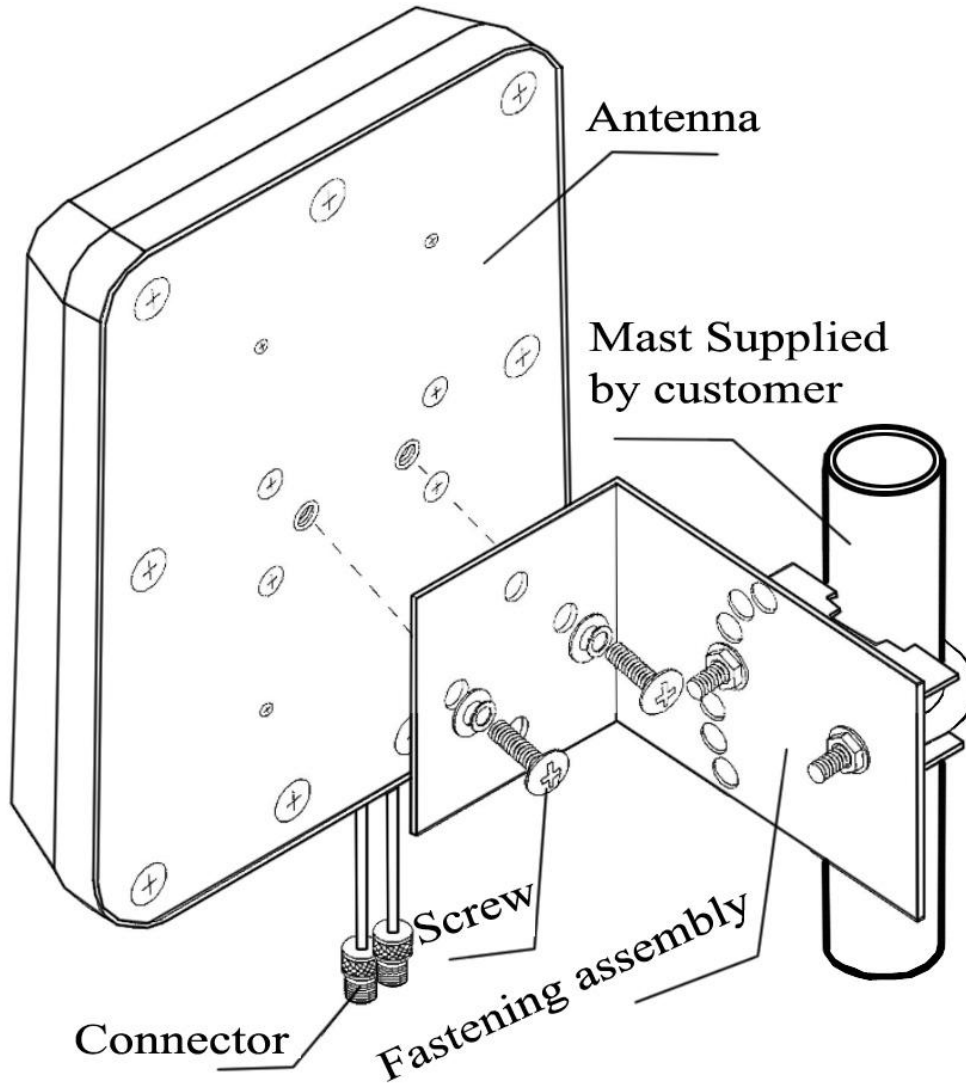
Freq.Range-MHz	1785 to 1805	
Bandwidth-MHz	20	
Polarization	±45°	
Gain-dBi	9	
Beam Electrical Downtilt-°	0	
Half-power beam width-°	H:55±5	E:55±5
Cross-pol-isolation-dB	≥23	
F/B-dB	≥ 20	
Impedance-Ω	50	
VSWR	≤ 1.5	
Max.Power-W	50	
Lightning Protection	DC Grounded	

Mechanical Specifications

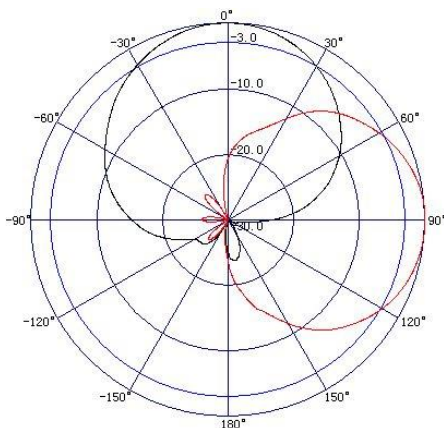
Connector	2×N female or Customized	
Connector Position	Cable outgoing	
Dimension-MM	About 190×190×40	
Weight-KG	About 1	
Radome material	ABS	
Radome color	White	
Mechanical tilt-°	0 to 30	
Operational Temperature-°C	-40 to 60	
Storage Temperature-°C	-55 to 85	
Relative Humidity-%	5 to 95	
Rated Wind Velocity-M/S	60	
Mounting way	Mast	
Mast Diameter-MM	Φ35 to 50	



Installation Demonstrations



Typical pattern



Connector

