



Directional Flat Panel Antenna



- Model: FTD-2324PB08DP70
- Name: Directional Flat Panel Antenna
- Freq.Range: 2300 to 2400 MHz
- Communications system:TDD,
Radio positioning system
- Application scenario:
Point to point, Point to multipoint,
Outdoor signal directional coverage

Tip: Pictures are for reference only.
Please refer to physical objects.

Electrical Specifications

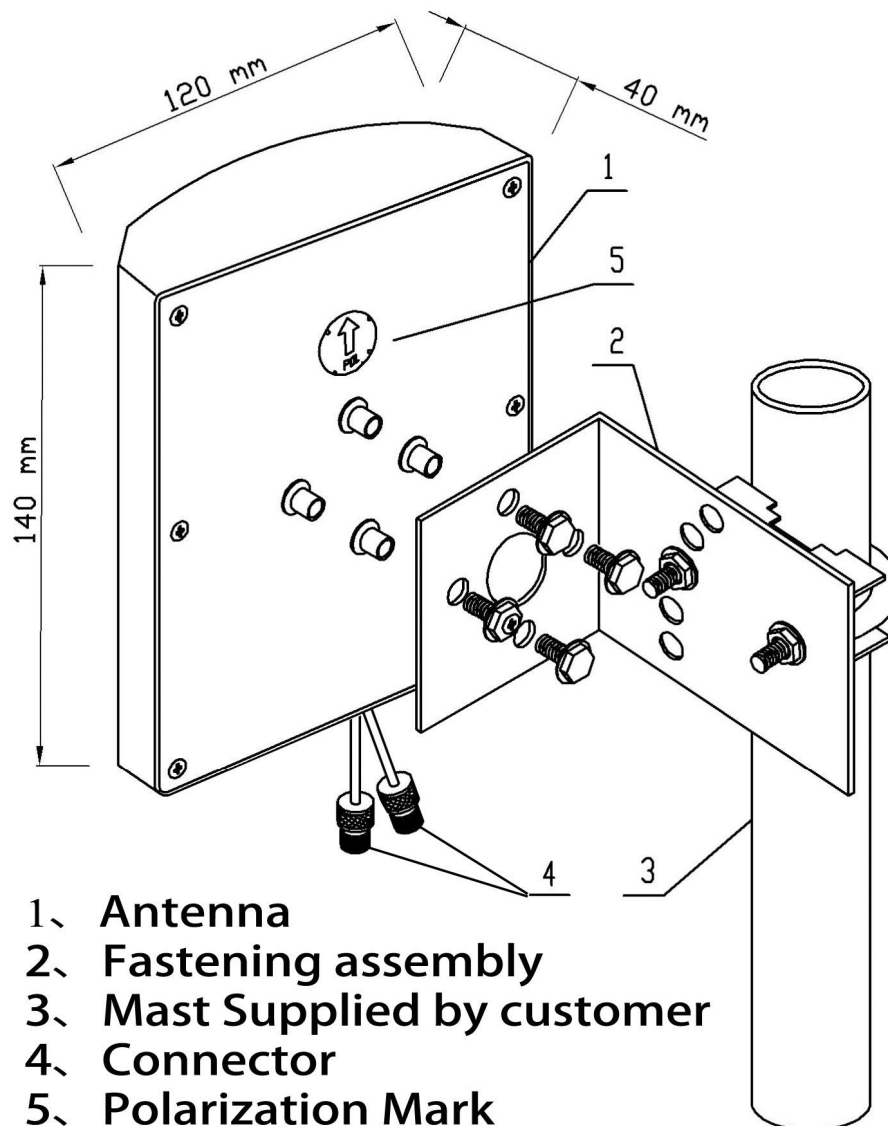
Freq.Range-MHz	2300 to 2400	
Bandwidth-MHz	100	
Polarization	±45°	
Gain-dBi	2×8	
Beam Electrical Downtilt-°	0	
Half-power beam width-°	H:70	E:65
Cross-pol-isolation-dB	≥20	
F/B-dB	≥ 15	
Impedance-Ω	50	
VSWR	≤ 2.0	
Max.Power-W	50	
Lightning Protection	DC Grounded	

Mechanical Specifications

Connector	2×N female or Customized	
Connector Position	Cable outgoing	
Dimension-MM	About 140×120×40	
Weight-KG	About 0.5	
Radome material	ABS	
Radome color	White	
Mechanical tilt-°	0 to 30	
Operational Temperature-°C	-40 to 60	
Storage Temperature-°C	-55 to 85	
Relative Humidity-%	5 to 95	
Rated Wind Velocity-M/S	60	
Mounting way	Mast	
Mast Diameter-MM	Φ35 to 50	



Installation Demonstrations



Typical pattern

