



Directional Flat Panel Antenna



- Model: FTD-2327PB09VH60L
- Name: Directional Flat Panel Antenna
- Freq.Range: 2300 to 2700 MHz
- Communications system:MMDS/WLAN/WFFI, 2.4G Spread Spectrum Communication, Microwave communication system
- Application scenario:
Point to point, Point to multipoint,
Outdoor signal directional coverage,
Public wireless hotspot coverage

Tip: Pictures are for reference only.
Please refer to physical objects.

Electrical Specifications

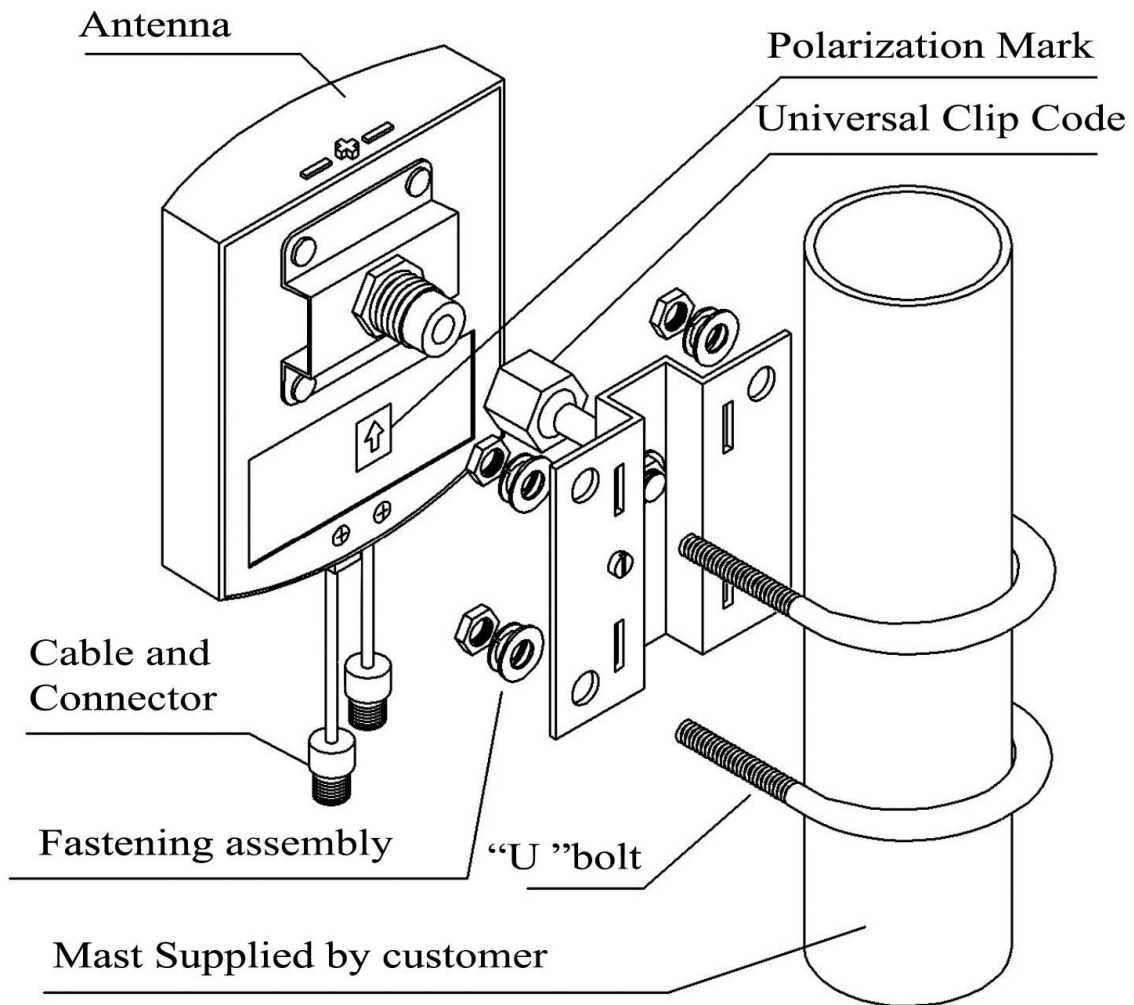
Freq.Range-MHz	2300 to 2700	
Bandwidth-MHz	400	
Polarization	Vertical and Horizontal	
Gain-dBi	9	
Beam Electrical Downtilt-°	0	
Half-power beam width-°	H:60	E:55
Cross-pol-isolation-dB	≥20	
F/B-dB	≥ 20	
Impedance-Ω	50	
VSWR	≤ 1.7	
Max.Power-W	50	
Lightning Protection	DC Grounded	

Mechanical Specifications

Connector	2×N female or Customized	
Connector Position	Cable outgoing	
Dimension-MM	About 125×97×30	
Weight-KG	About 0.3	
Radome material	ABS	
Radome color	Gray	
Mechanical tilt-°	0 to 20	
Operational Temperature-°C	-40 to 60	
Storage Temperature-°C	-55 to 85	
Relative Humidity-%	5 to 95	
Rated Wind Velocity-M/S	60	
Mounting way	Mast	
Mast Diameter-MM	Φ35 to 50	



Installation Demonstrations



Typical pattern

