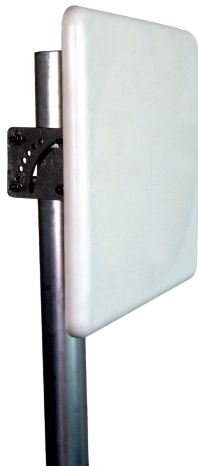




Directional Flat Panel Antenna



- Model: FTD-2327PB18V20
- Name: Directional Flat Panel Antenna
- Freq.Range: 2300 to 2700 MHz
- Communications system:MMDS/WLAN/WFFI, 2.4G Spread Spectrum Communication, Microwave communication system
- Application scenario:
Point to point, Point to multipoint,
Outdoor signal directional coverage,
Public wireless hotspot coverage

Tip: Pictures are for reference only.
Please refer to physical objects.

Electrical Specifications

| | |
|----------------------------|----------------|
| Freq.Range-MHz | 2300 to 2700 |
| Bandwidth-MHz | 400 |
| Polarization | Vertical |
| Gain-dBi | 18 |
| Beam Electrical Downtilt-° | 0 |
| Half-power beam width-° | H:20 E:20 |
| F/B-dB | ≥ 28 |
| Impedance-Ω | 50 |
| VSWR | ≤ 1.8 |
| Max.Power-W | 50 |
| Lightning Protection | DC Grounded |

Mechanical Specifications

| | |
|----------------------------|------------------------|
| Connector | N female or Customized |
| Connector Position | Back |
| Dimension-MM | About 306×306×25 |
| Weight-KG | About 1.4 |
| Radome material | ABS |
| Radome color | White |
| Mechanical tilt-° | 0 to 60 |
| Operational Temperature-°C | -40 to 60 |
| Storage Temperature-°C | -55 to 85 |
| Relative Humidity-% | 5 to 95 |
| Rated Wind Velocity-M/S | 60 |
| Mounting way | Mast |
| Mast Diameter-MM | Φ40 to 50 |



Installation Demonstrations

