



Directional Sector Antenna



- Model: FTD-2327SH11DP90
- Name: Directional Sector Antenna
- Freq.Range: 2300 to 2700 MHz
- Communications system:
MMDS/WLAN/WIFI/ISM,
2.4G Spread Spectrum Communication,
Wireless cellular Communication System
- Application scenario:
Point to multipoint, Base station antenna,
Outdoor signal directional coverage,
Public wireless hotspot coverage

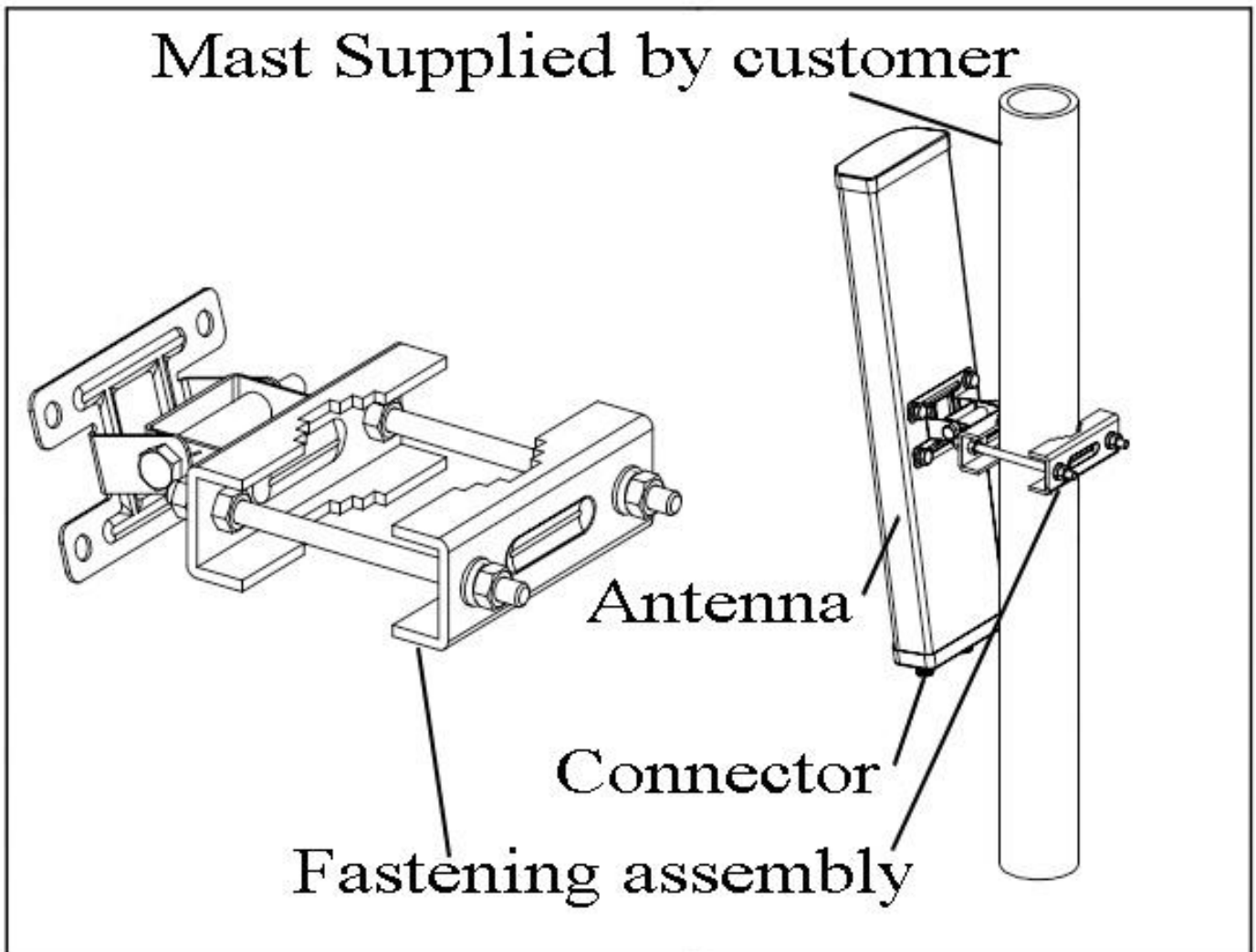
Tip: Pictures are for reference only.
Please refer to physical objects.

Electrical Specifications	
Freq.Range-MHz	2300 to 2700
Bandwidth-MHz	400
Polarization	$\pm 45^\circ$
Gain-dBi	11
Beam Electrical Downtilt- $^\circ$	0
Half-power beam width- $^\circ$	H:90 E:30
F/B-dB	≥ 22
Cross-pol-isolation-dB	≥ 28
Impedance- Ω	50
VSWR	≤ 1.5
Max.Power-W	100
Lightning Protection	DC Grounded

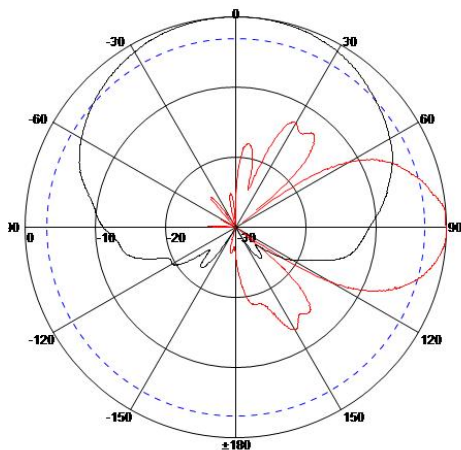
Mechanical Specifications	
Connector	2×N female
Connector Position	Bottom
Dimension-MM	About 230×128×56
Weight-KG	About 1.1
Radome material	UPVC
Radome color	Gray
Mechanical tilt- $^\circ$	0 to 15
Operational Temperature- $^\circ\text{C}$	-40 to 60
Storage Temperature- $^\circ\text{C}$	-55 to 85
Relative Humidity-%	5 to 95
Rated Wind Velocity-M/S	60
Mounting way	Mast
Mast Diameter-MM	$\Phi 35$ to 75



Installation Demonstrations



Typical pattern



Connector

