



# Directional Sector Antenna



- Model: FTD-2327SH14VH90
- Name: Directional Sector Antenna
- Freq.Range: 2300 to 2700 MHz
- Communications system:  
MMDS/WLAN/WIFI/ISM,  
2.4G Spread Spectrum Communication,  
Wireless cellular Communication System
- Application scenario:  
Point to multipoint, Base station antenna,  
Outdoor signal directional coverage,  
Public wireless hotspot coverage

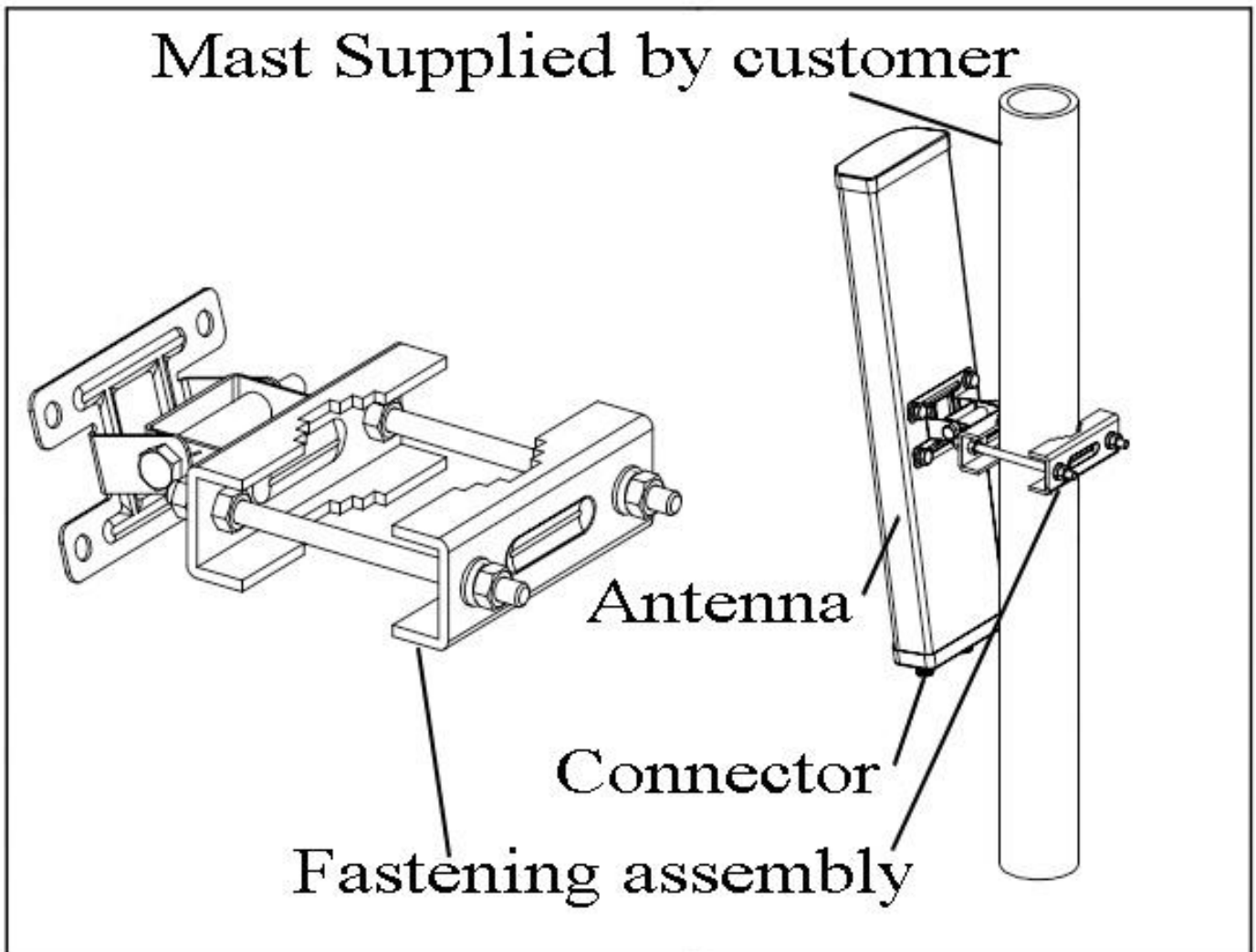
Tip: Pictures are for reference only.  
Please refer to physical objects.

Electrical Specifications	
Freq.Range-MHz	2300 to 2700
Bandwidth-MHz	400
Polarization	Vertical and Horizontal
Gain-dBi	14
Beam Electrical Downtilt-°	0
Half-power beam width-°	H:90 E:15
F/B-dB	≥ 23
Cross-pol-isolation-dB	≥30
Impedance-Ω	50
VSWR	≤ 1.5
Max.Power-W	100
Lightning Protection	DC Grounded

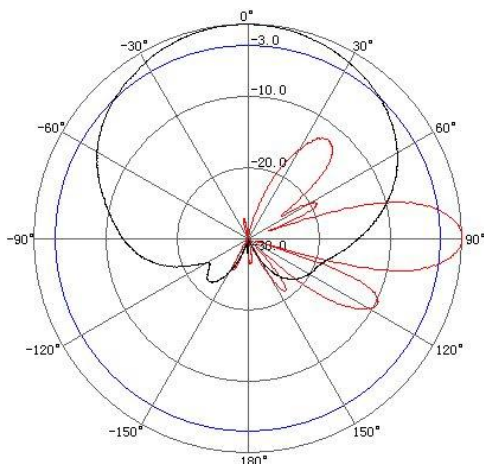
Mechanical Specifications	
Connector	2×N female
Connector Position	Bottom
Dimension-MM	About 500×128×56
Weight-KG	About 1.5
Radome material	UPVC
Radome color	Gray
Mechanical tilt-°	0 to 15
Operational Temperature-°C	-40 to 60
Storage Temperature-°C	-55 to 85
Relative Humidity-%	5 to 95
Rated Wind Velocity-M/S	60
Mounting way	Mast
Mast Diameter-MM	Φ35 to 75



## Installation Demonstrations



**Typical pattern**



**Connector**

