



Directional Flat Panel Antenna



- Model: FTD-2442PB1414V30A
- Name: Directional Flat Panel Antenna
- Freq.Range: 2400 to 2500 / 3700 to 4200 MHz
- Communications system:
 - 2.4G WLAN/WIFI/RFID,
 - 2.4G Spread Spectrum Communication,
 - UWB Radio positioning system
- Application scenario:
 - Point to point, Point to multipoint,
 - Wireless data and image transmission,
 - Outdoor signal directional coverage

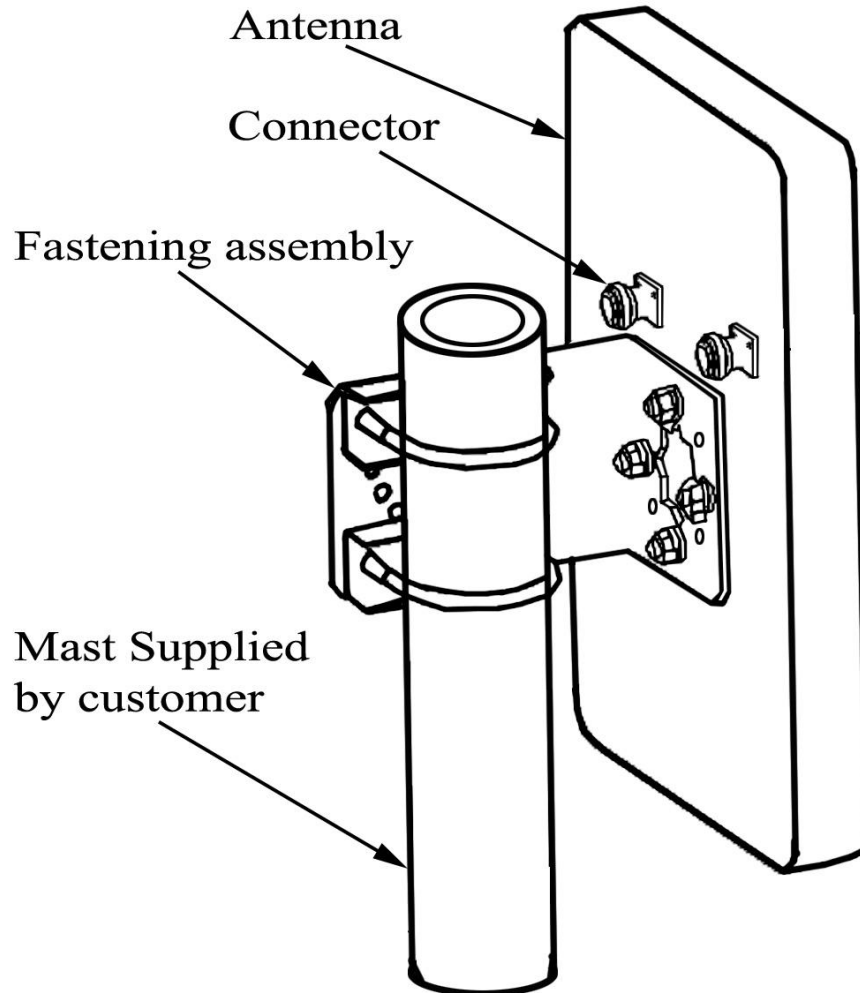
Tip: Pictures are for reference only.
Please refer to physical objects.

Electrical Specifications		
Freq.Range-MHz	2400 to 2500	3700 to 4200
Bandwidth-MHz	100	500
Polarization	Vertical	
Gain-dBi	14	14
Beam Electrical Downtilt-°	0	
Half-power beam width-°	H:35±5 E:35	H:32±5 E:35
F/B-dB	≥ 20	
Impedance-Ω	50	
VSWR	≤ 2.0	
Max.Power-W	50	
Lightning Protection	DC Grounded	

Mechanical Specifications	
Connector	2×N female
Connector Position	Back
Dimension-MM	About 280×190×25
Weight-KG	About 1
Radome material	ABS
Radome color	White
Mechanical tilt-°	0 to 30
Operational Temperature-°C	-40 to 60
Storage Temperature-°C	-55 to 85
Relative Humidity-%	5 to 95
Rated Wind Velocity-M/S	60
Mounting way	Mast
Mast Diameter-MM	Φ35 to 50



Installation Demonstrations



Typical pattern

2400 to 2500MHz

3700 to 4200MHz

