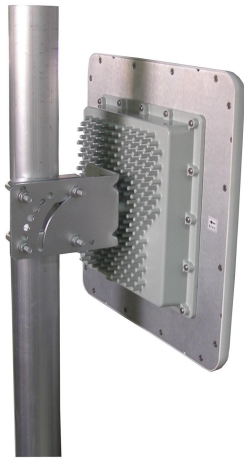




Antenna with mounting cavity



- Model: FTD-2458MCPB1212VH60B-6
- Name: Antenna with mounting cavity
- Freq.Range: 2400 to 2500 / 5150 to 5850 MHz
- Communications system:
2.4/5.8GHz WLAN/WIFI/ISM/UNII/RFID,
Spread Spectrum Communication
- Application scenario: Bridge antenna,
Point to point, Point to multipoint,
Outdoor signal directional coverage,
Wireless data and image transmission,
Wireless bridging, IEEE802.11a,b,g,n

Tip: Pictures are for reference only.
Please refer to physical objects.

Electrical Specifications		
Freq.Range-MHz	2400 to 2500	5150 to 5850
Bandwidth-MHz	100	700
Polarization	2×Vertical and Horizontal	2×Vertical and Horizontal
Gain-dBi	12	12
Beam Electrical Uptilt-°	0	0
Half-power beam width-°	H:60 E:30	H:60 E:30
Cross-pol-isolation-dB	≥ 28	
F/B-dB	≥ 25	
Impedance-Ω	50	
VSWR	≤ 1.5	≤ 2.0
Max.Power-W	20	
Lightning Protection	DC Grounded	

Mechanical Specifications	
Connector	6×U.FL or Customized Three 2.4GHz Connector and Three 5.8GHz Connector
Cable Length-CM	20CM or Customized
Antenna Dimension-MM	About 306×306×25
Mounting Cavity Dimension-MM	About 180×180×31 (IN)
Mounting Cavity Connector	2×N female+1×PG16
Weight-KG	About 2.6
Radome material and color	ABS (White)
Mounting Cavity color	Gray
Mechanical tilt-°	0 to 60
Operational Temperature-°C	-40 to 60
Relative Humidity-%	5 to 95
Rated Wind Velocity-M/S	60
Mounting way	Mast 【Φ35 to 50】



Installation Demonstrations

