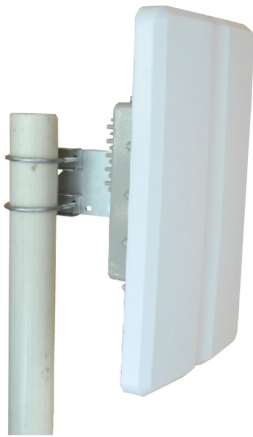




Antenna with mounting cavity



- Model: FTD-2458MCSH1516VH60B-4
- Name: Antenna with mounting cavity
- Freq.Range: 2400 to 2500 / 5150 to 5850 MHz
- Communications system:
2.4/5.8GHz WLAN/WIFI/ISM/UNII/RFID,
Spread Spectrum Communication
- Application scenario: Bridge antenna,
Point to point, Point to multipoint,
Outdoor signal directional coverage,
Wireless data and image transmission,
Wireless bridging, IEEE802.11a,b,g,n

Tip: Pictures are for reference only.
Please refer to physical objects.

| Electrical Specifications | | |
|---------------------------|-------------------------|-------------------------|
| Freq.Range-MHz | 2400 to 2500 | 5150 to 5850 |
| Bandwidth-MHz | 100 | 700 |
| Polarization | Vertical and Horizontal | Vertical and Horizontal |
| Gain-dBi | 15 | 16 |
| Beam Electrical Uptilt-° | 0 | 0 |
| Half-power beam width-° | H:60 E:15 | H:60 E:8 |
| Cross-pol-isolation-dB | ≥ 25 | |
| F/B-dB | ≥ 25 | |
| Impedance-Ω | 50 | |
| VSWR | ≤ 1.5 | ≤ 2.0 |
| Max.Power-W | 20 | |
| Lightning Protection | DC Grounded | |

| Mechanical Specifications | |
|------------------------------|---|
| Connector | 4×U.FL or Customized Two 2.4GHz Connector and Two 5.8GHz Connector |
| Cable Length-CM | 20CM or Customized |
| Antenna Dimension-MM | About 400×240×35 |
| Mounting Cavity Dimension-MM | About 180×180×31 (IN) |
| Mounting Cavity Connector | 2×N female+1×PG16 |
| Weight-KG | About 3.5 |
| Radome material and color | ABS (White) |
| Mounting Cavity color | Gray |
| Mechanical tilt-° | 0 to 60 |
| Operational Temperature-°C | -40 to 60 |
| Relative Humidity-% | 5 to 95 |
| Rated Wind Velocity-M/S | 60 |
| Mounting way | Mast 【Φ35 to 50】 |



Installation Demonstrations

