



# Directional Flat Panel Antenna



- Model: FTD-2458PB1011V50BL
- Name: Directional Flat Panel Antenna
- Freq.Range: 2400 to 2500 / 5150 to 5850 MHz
- Communications system:
  - 2.4/5.8GHz WLAN/WIFI/ISM/UNII
  - Spread Spectrum Communication
- Application scenario:
  - Point to point, Point to multipoint,
  - Wireless data and image transmission,
  - Outdoor signal directional coverage,
  - Public wireless hotspot coverage,
  - IEEE802.11a/b/g/n

Tip: Pictures are for reference only.  
Please refer to physical objects.

## Electrical Specifications

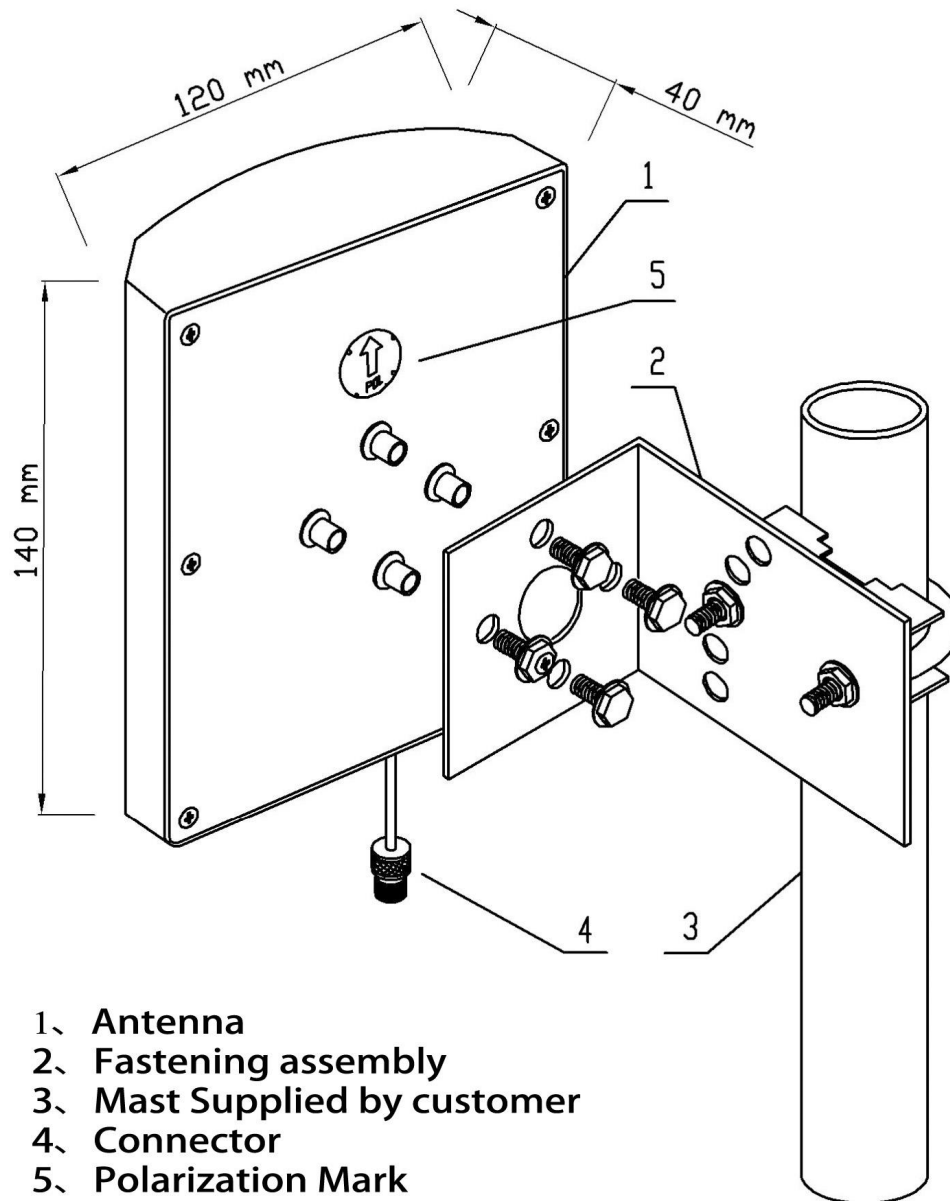
Freq.Range-MHz	2400 to 2500	5150 to 5850
Bandwidth-MHz	100	700
Polarization	Vertical	
Gain-dBi	10	11
Beam Electrical Downtilt-°	0	
Half-power beam width-°	H:60 E:30	H:50 E:25
F/B-dB	≥ 20	≥ 25
Impedance-Ω	50	
VSWR	≤ 1.5	≤ 2.0
Max.Power-W	50	
Lightning Protection	DC Grounded	

## Mechanical Specifications

Connector	N female or Customized
Connector Position	Cable outgoing
Cable Length-CM	15CM or Customized
Dimension-MM	About 140×120×40
Weight-KG	About 0.5
Radome material	ABS
Radome color	White
Mechanical tilt-°	0 to 30
Operational Temperature-°C	-40 to 60
Storage Temperature-°C	-55 to 85
Relative Humidity-%	5 to 95
Rated Wind Velocity-M/S	60
Mounting way	Mast
Mast Diameter-MM	Φ35 to 50



## Installation Demonstrations



## Communication channel

2400~2500  
5150~5850