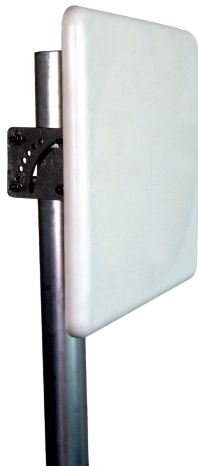




Directional Flat Panel Antenna



- Model: FTD-2458PB1417V20G
- Name: Directional Flat Panel Antenna
- Freq.Range: 2400 to 2500 / 5150 to 5850 MHz
- Communications system:
 - 2.4/5.8GHz WLAN/WIFI/ISM/UNII
 - Spread Spectrum Communication
- Application scenario:
 - Point to point, Point to multipoint,
 - Wireless data and image transmission,
 - Outdoor signal directional coverage,
 - Public wireless hotspot coverage,
 - IEEE802.11a/b/g/n

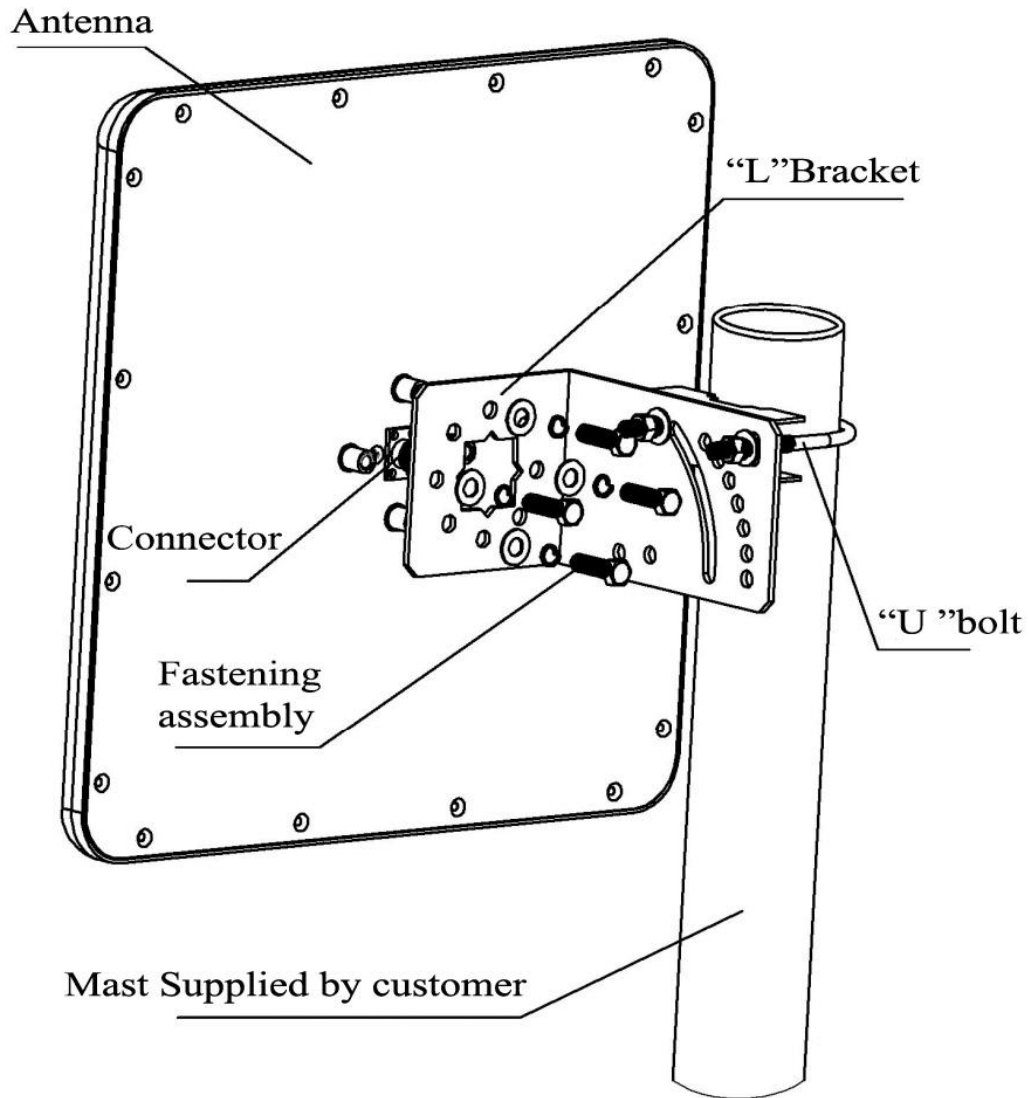
Tip: Pictures are for reference only.
Please refer to physical objects.

| Electrical Specifications | | | |
|----------------------------|--------------|------|--------------|
| Freq.Range-MHz | 2400 to 2500 | | 5150 to 5850 |
| Bandwidth-MHz | 100 | | 700 |
| Polarization | Vertical | | |
| Gain-dBi | 14 | | 17 |
| Beam Electrical Downtilt-° | 0 | | |
| Half-power beam width-° | H:40 | E:20 | H:20 E:11 |
| F/B-dB | ≥ 25 | | |
| Impedance-Ω | 50 | | |
| VSWR | ≤ 2.0 | | |
| Max.Power-W | 50 | | |
| Lightning Protection | DC Grounded | | |

| Mechanical Specifications | |
|----------------------------|------------------|
| Connector | N female |
| Connector Position | Back |
| Dimension-MM | About 306×306×25 |
| Weight-KG | About 1.4 |
| Radome material | ABS |
| Radome color | White |
| Mechanical tilt-° | 0 to 30 |
| Operational Temperature-°C | -40 to 60 |
| Storage Temperature-°C | -55 to 85 |
| Relative Humidity-% | 5 to 95 |
| Rated Wind Velocity-M/S | 60 |
| Mounting way | Mast |
| Mast Diameter-MM | Φ35 to 50 |



Installation Demonstrations



Communication channel

2400~2500
5150~5850