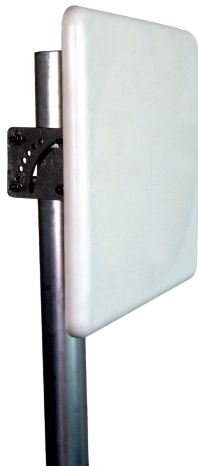




Directional Flat Panel Antenna



- Model: FTD-2458PB1720V11G
- Name: Directional Flat Panel Antenna
- Freq.Range: 2400 to 2500 / 5150 to 5850 MHz
- Communications system:
 - 2.4/5.8GHz WLAN/WIFI/ISM/UNII
 - Spread Spectrum Communication
- Application scenario:
 - Point to point, Point to multipoint,
 - Wireless data and image transmission,
 - Outdoor signal directional coverage,
 - Public wireless hotspot coverage,
 - IEEE802.11a/b/g/n

Tip: Pictures are for reference only.
Please refer to physical objects.

Electrical Specifications

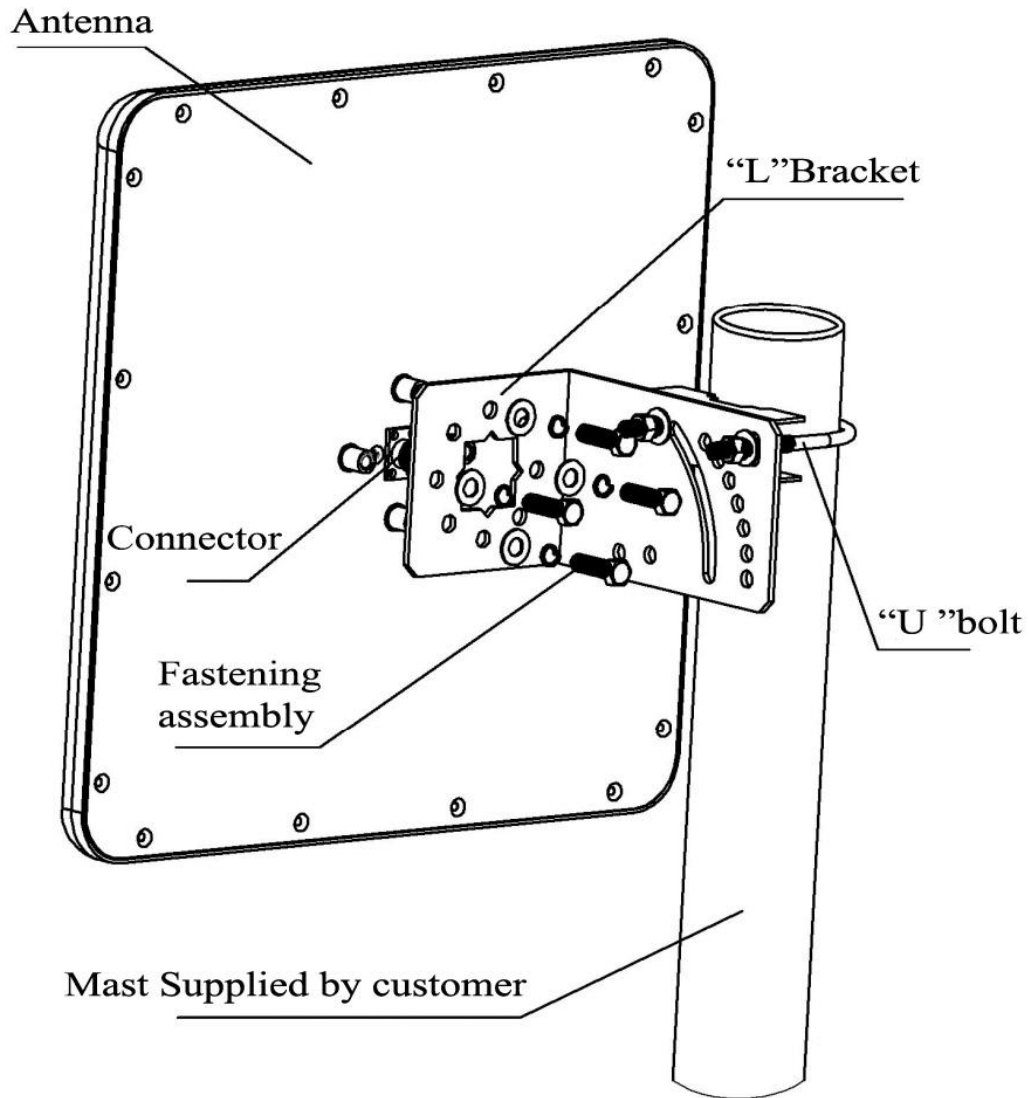
Freq.Range-MHz	2400 to 2500	5150 to 5850
Bandwidth-MHz	100	700
Polarization	Vertical	
Gain-dBi	17	20
Beam Electrical Downtilt-°	0	
Half-power beam width-°	H:22 E:22	H:11 E:11
F/B-dB	≥ 25	
Impedance-Ω	50	
VSWR	≤ 2.0	
Max.Power-W	50	
Lightning Protection	DC Grounded	

Mechanical Specifications

Connector	N female
Connector Position	Back
Dimension-MM	About 306×306×25
Weight-KG	About 1.4
Radome material	ABS
Radome color	White
Mechanical tilt-°	0 to 30
Operational Temperature-°C	-40 to 60
Storage Temperature-°C	-55 to 85
Relative Humidity-%	5 to 95
Rated Wind Velocity-M/S	60
Mounting way	Mast
Mast Diameter-MM	Φ35 to 50



Installation Demonstrations



Communication channel

2400~2500
5150~5850