



Directional Flat Panel Antenna



Tip: Pictures are for reference only.
Please refer to physical objects.

- Model: FTD-2458PB0910VH60A
- Name: Directional Flat Panel Antenna
- Freq.Range: 2400 to 2500 / 5150 to 5850 MHz
- Communications system:
2.4/5.8GHz WLAN/WIFI/ISM/UNII
Spread Spectrum Communication
- Application scenario:
Point to point, Point to multipoint,
Wireless data and image transmission,
Outdoor signal directional coverage,
Public wireless hotspot coverage,
Wireless bridging, Bridge antenna,
IEEE802.11a/b/g/n

Electrical Specifications

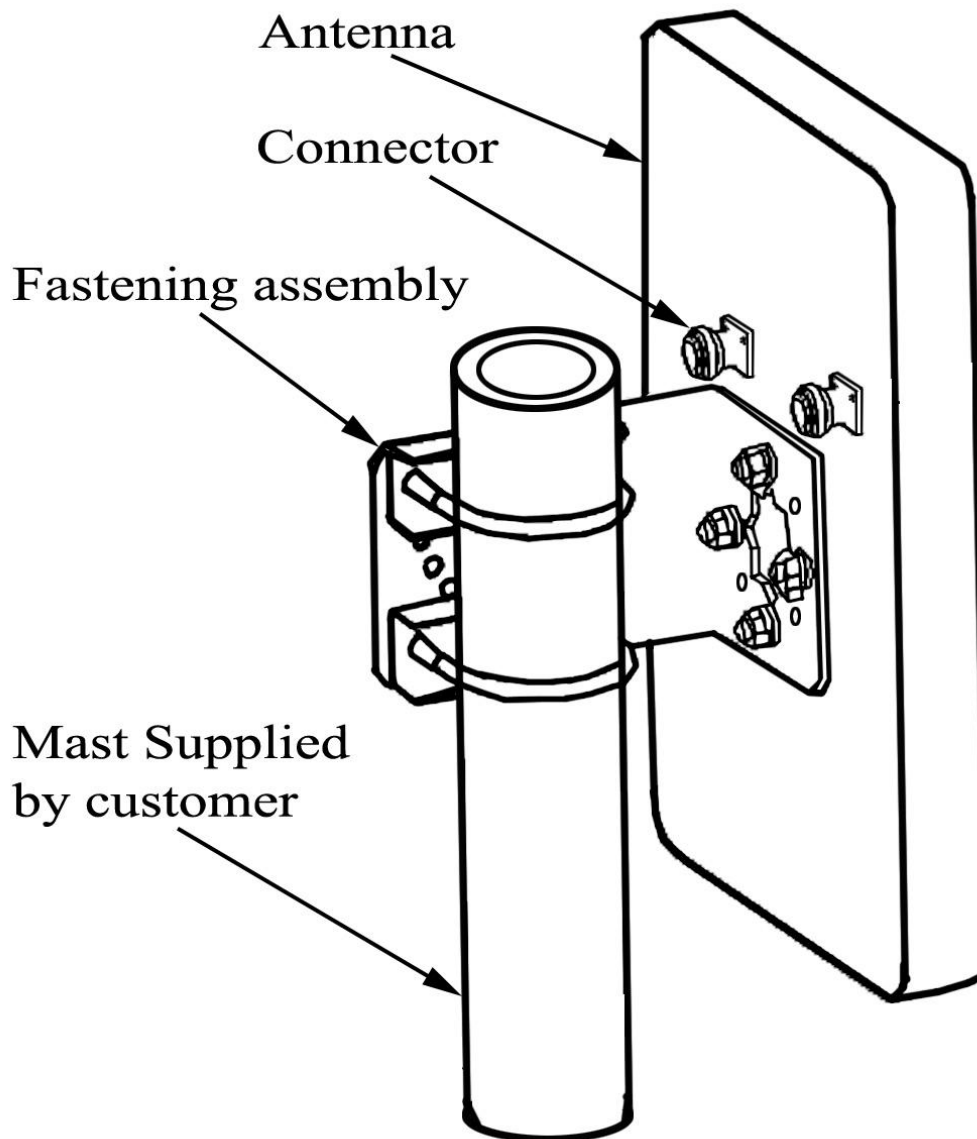
| | | |
|----------------------------|-------------------------|--------------|
| Freq.Range-MHz | 2400 to 2500 | 5150 to 5850 |
| Freq.Range-MHz | 100 | 700 |
| Polarization | Vertical and Horizontal | |
| Gain-dBi | 9 | 10 |
| Beam Electrical Downtilt-° | 0 | |
| Half-power beam width-° | H:60 E:50 | H:50 E:40 |
| Cross-pol-isolation-dB | ≥ 25 | ≥ 25 |
| F/B-dB | ≥ 20 | ≥ 25 |
| Impedance-Ω | 50 | |
| VSWR | ≤ 1.5 | ≤ 2.0 |
| Max.Power-W | 50 | |
| Lightning Protection | DC Grounded | |

Mechanical Specifications

| | |
|----------------------------|------------------|
| Connector | 2 ×N female |
| Connector Position | Back |
| Dimension-MM | About 172×92×18 |
| Weight-KG | About 0.2 |
| Radome material | ABS |
| Radome color | White |
| Mechanical tilt-° | 0 to 30 |
| Operational Temperature-°C | -40 to 60 |
| Storage Temperature-°C | -55 to 85 |
| Relative Humidity-% | 5 to 95 |
| Rated Wind Velocity-M/S | 60 |
| Mounting way | Mast 【Φ35 to 50】 |



Installation Demonstrations



Communication channel

2400~2500
5150~5850

2-N