



Directional Flat Panel Antenna



Tip: Pictures are for reference only.
Please refer to physical objects.

- Model: FTD-2458PB1011VH60C
- Name: Directional Flat Panel Antenna
- Freq.Range: 2400 to 2500 / 5150 to 5850 MHz
- Communications system:
2.4/5.8GHz WLAN/WIFI/ISM/UNII
Spread Spectrum Communication
- Application scenario:
Point to point, Point to multipoint,
Wireless data and image transmission,
Outdoor signal directional coverage,
Public wireless hotspot coverage,
Wireless bridging, Bridge antenna,
IEEE802.11a/b/g/n

Electrical Specifications

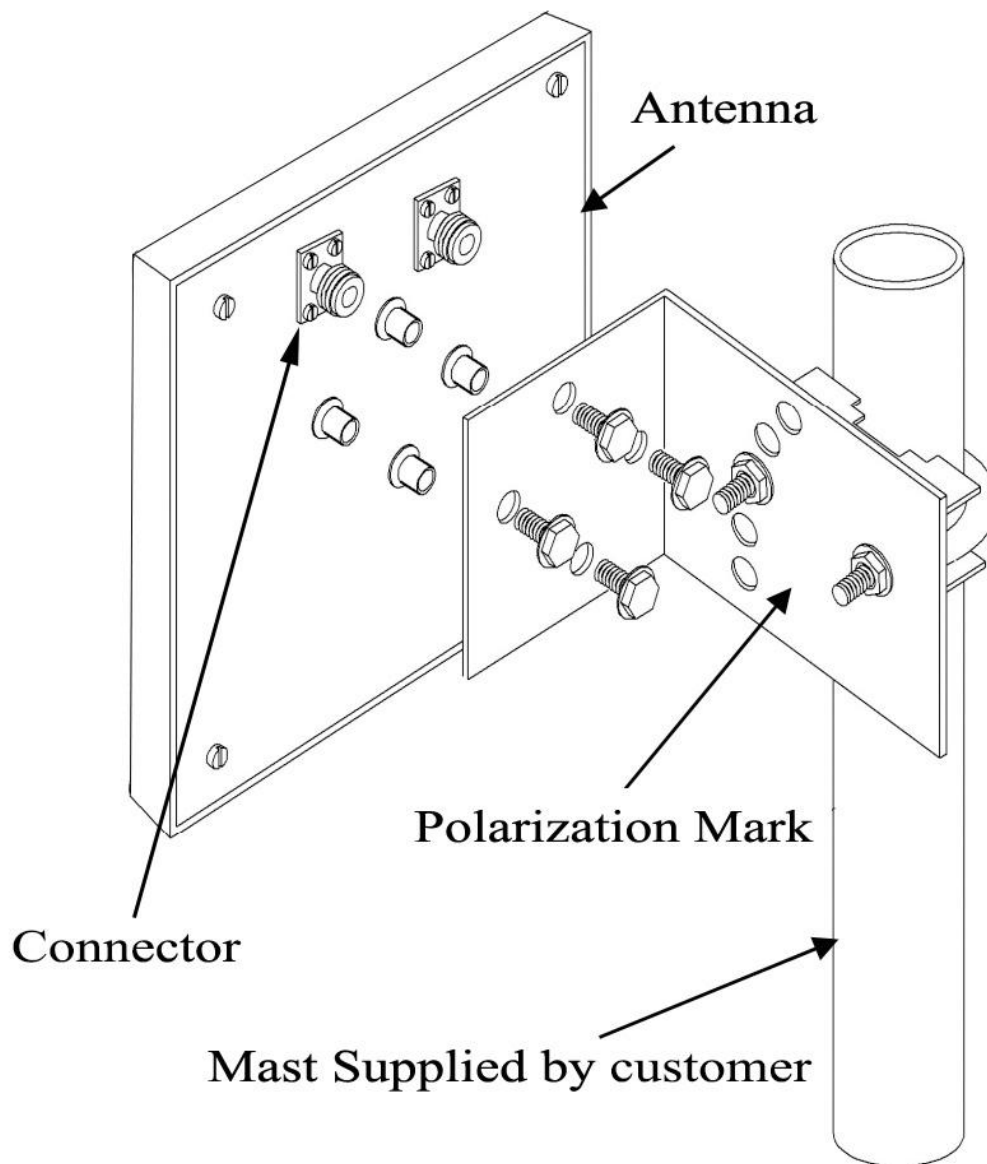
Freq.Range-MHz	2400 to 2500	5150 to 5850
Freq.Range-MHz	100	700
Polarization	Vertical and Horizontal	
Gain-dBi	10	11
Beam Electrical Downtilt-°	0	
Half-power beam width-°	H:60 E:30	H:50 E:25
Cross-pol-isolation-dB	≥ 25	≥ 25
F/B-dB	≥ 20	≥ 25
Impedance-Ω	50	
VSWR	≤ 1.5	≤ 2.0
Max.Power-W	50	
Lightning Protection	DC Grounded	

Mechanical Specifications

Connector	2 ×N female
Connector Position	Back
Dimension-MM	About 190×190×40
Weight-KG	About 1
Radome material	ABS
Radome color	White
Mechanical tilt-°	0 to 60
Operational Temperature-°C	-40 to 60
Storage Temperature-°C	-55 to 85
Relative Humidity-%	5 to 95
Rated Wind Velocity-M/S	60
Mounting way	Mast 【Φ35 to 50】



Installation Demonstrations



Communication channel

2400~2500
5150~5850

2-N