



Directional Sector Antenna



- Model: FTD-24SH16DP90A
- Name: Directional Sector Antenna
- Freq.Range: 2400 to 2500 MHz
- Communications system:
 - 2.4GHz WALN/WIFI/ISM/UNII,
 - 2.4G Spread Spectrum Communication
- Application scenario:
 - Point to multipoint, Base station antenna,
 - Outdoor signal directional coverage,
 - Wireless data and image transmission,
 - Public wireless hotspot coverage,
 - IEEE802.11b/g

Tip: Pictures are for reference only.
Please refer to physical objects.

Electrical Specifications

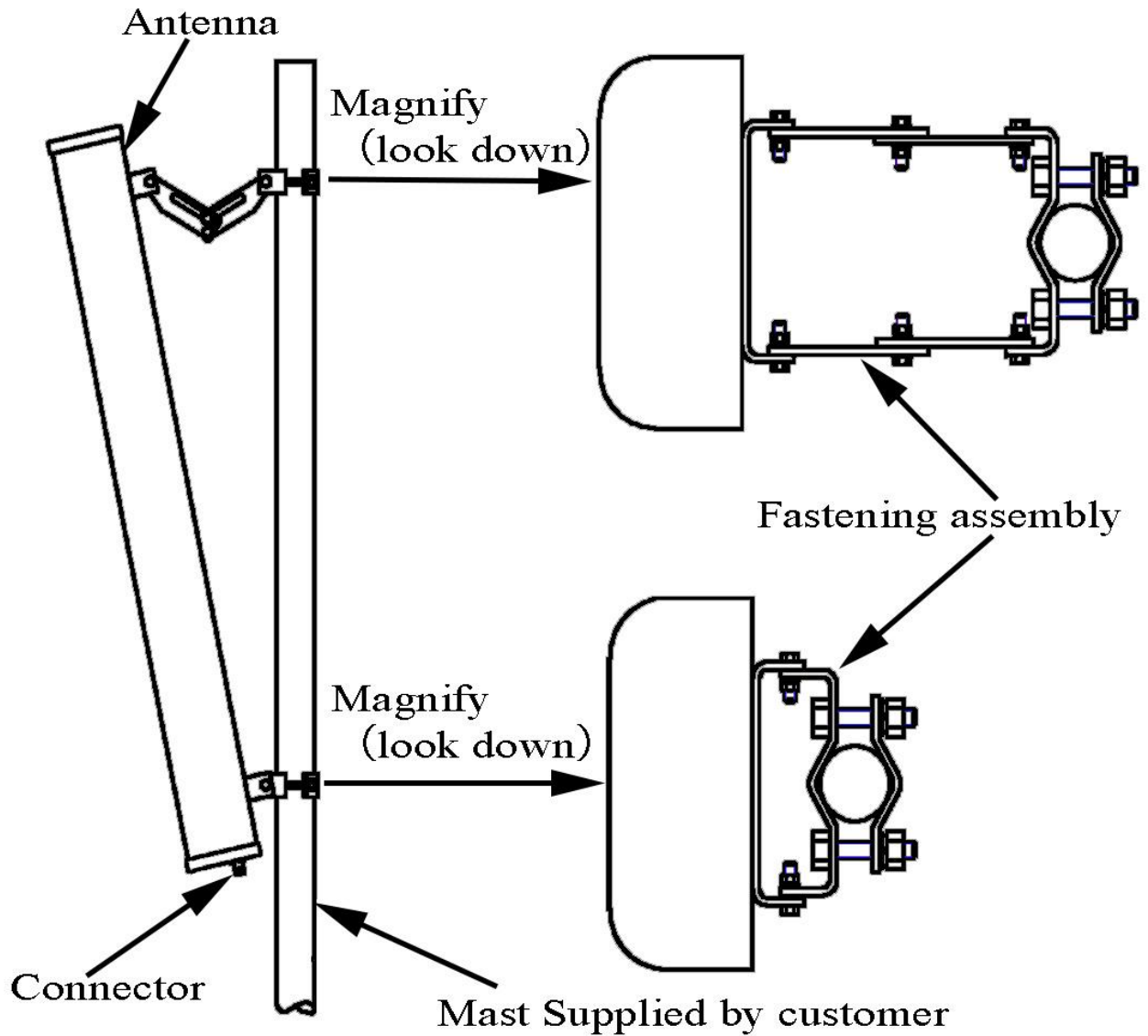
Freq.Range-MHz	2400 to 2500
Bandwidth-MHz	100
Polarization	$\pm 45^\circ$
Gain-dBi	16
Beam Electrical Downtilt- $^\circ$	0
Half-power beam width- $^\circ$	H:90 E:7.5
F/B-dB	≥ 23
Cross-pol-isolation-dB	≥ 30
Impedance- Ω	50
VSWR	≤ 1.5
Max.Power-W	100
Lightning Protection	DC Grounded

Mechanical Specifications

Connector	2×N female
Connector Position	Bottom
Dimension-MM	About 850×128×56
Weight-KG	About 3.2
Radome material	UPVC
Radome color	Gray
Mechanical tilt- $^\circ$	0 to 12
Operational Temperature- $^\circ\text{C}$	-40 to 60
Storage Temperature- $^\circ\text{C}$	-55 to 85
Relative Humidity-%	5 to 95
Rated Wind Velocity-M/S	60
Mounting way	Mast
Mast Diameter-MM	$\Phi 35$ to 75



Installation Demonstrations



Typical pattern & Communication channel

