



Directional Sector Antenna



- Model: FTD-24SH16VH120EU
- Name: Directional Sector Antenna
- Freq.Range: 2400 to 2500 MHz
- Communications system:
 - 2.4GHz WALN/WIFI/ISM/UNII,
 - 2.4G Spread Spectrum Communication
- Application scenario:
 - Point to multipoint, Base station antenna,
 - Outdoor signal directional coverage,
 - Wireless data and image transmission,
 - Public wireless hotspot coverage,
 - IEEE802.11b/g

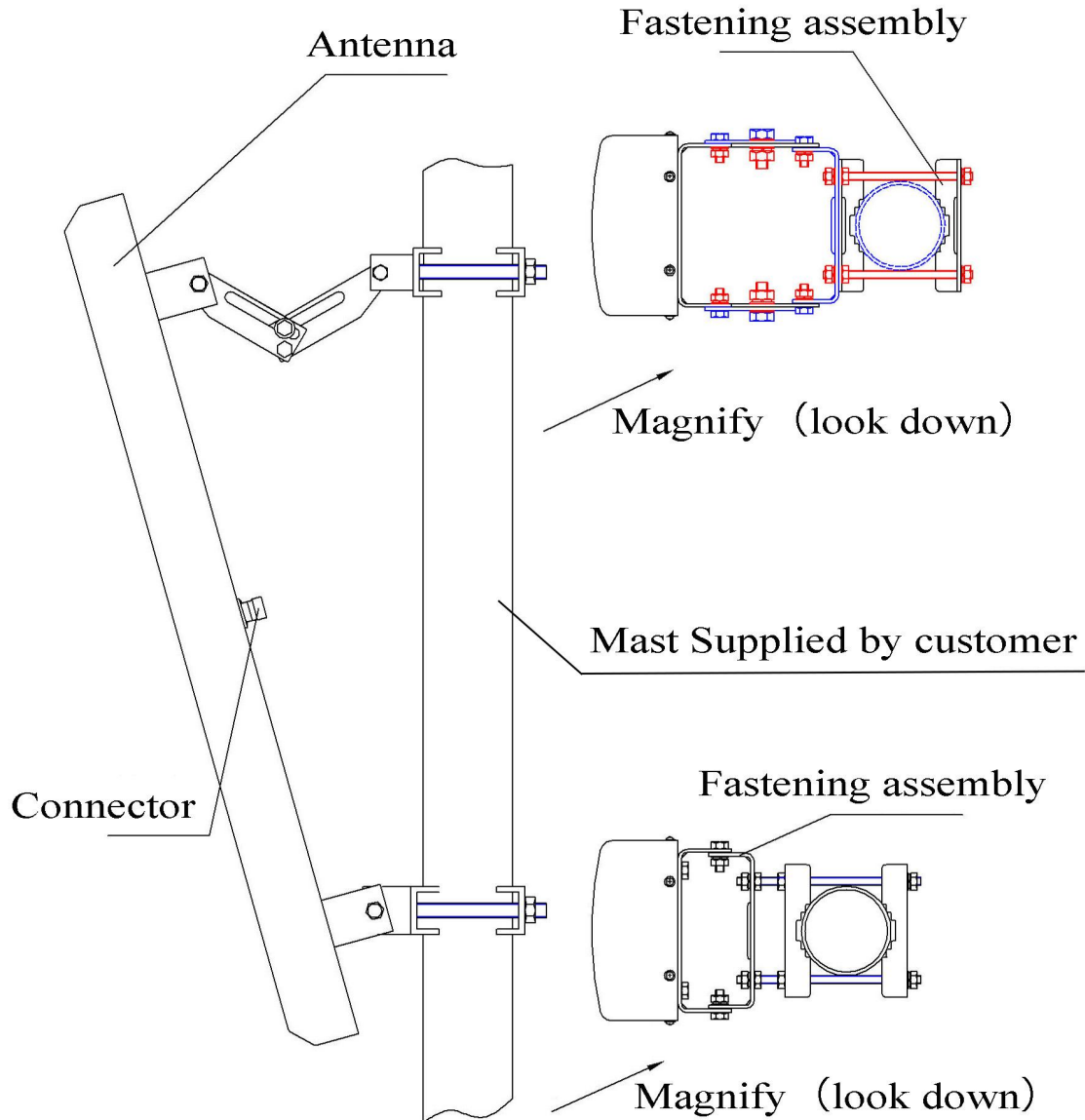
Tip: Pictures are for reference only.
Please refer to physical objects.

| Electrical Specifications | |
|----------------------------|-------------------------|
| Freq.Range-MHz | 2400 to 2500 |
| Bandwidth-MHz | 100 |
| Polarization | Vertical and Horizontal |
| Gain-dBi | 16 |
| Beam Electrical Downtilt-° | 0 |
| Half-power beam width-° | H:120 E:8 |
| F/B-dB | ≥ 23 |
| Cross-pol-isolation-dB | ≥ 30 |
| Impedance-Ω | 50 |
| VSWR | ≤ 1.5 |
| Max.Power-W | 100 |
| Lightning Protection | DC Grounded |

| Mechanical Specifications | |
|----------------------------|--|
| Connector | 2×SMA female |
| Connector Position | Back |
| Dimension-MM | About 800×139×73 |
| Weight-KG | About 3.5 |
| Radome material | UPVC |
| Radome color | Gray |
| Mechanical tilt-° | 0 to 15 |
| Operational Temperature-°C | -40 to 60 |
| Storage Temperature-°C | -55 to 85 |
| Relative Humidity-% | 5 to 95 |
| Rated Wind Velocity-M/S | 60 |
| Mounting way | Mast |
| Mast Diameter-MM | Φ35 to 75 |
| Remark | UBNT equipment mounting base is standard |



Installation Demonstrations



Typical pattern & Communication channel

