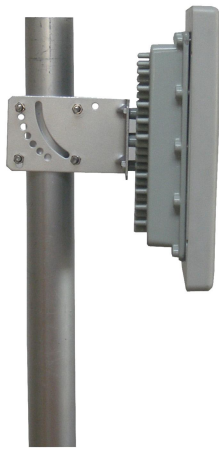




## Antenna with mounting cavity



- Model: FTD-24CPB17V20
- Name: Antenna with mounting cavity
- Freq.Range: 2400 to 2483 MHz
- Communications system:  
2.4GHz WLAN/WIFI/ISM/UNII/RFID,  
Spread Spectrum Communication
- Application scenario: Bridge antenna,  
Point to point, Point to multipoint,  
Outdoor signal directional coverage,  
Wireless data and image transmission,  
Wireless bridging, IEEE802.11b/g

Tip: Pictures are for reference only.  
Please refer to physical objects.

Electrical Specifications	
Freq.Range-MHz	2400 to 2483
Bandwidth-MHz	83
Polarization	Vertical or Horizontal
Gain-dBi	17
Beam Electrical Uptilt-°	0
Half-power beam width-°	H:23 E:23
F/B-dB	≥ 25
Impedance-Ω	50
VSWR	≤ 1.5
Max.Power-W	20
Lightning Protection	DC Grounded

Mechanical Specifications	
Connector	MMCX Bend male or Customized
Connector Position	Cable outgoing
Cable Length-CM	20CM or Customized
Antenna Dimension-MM	About 261×261×35
Mounting Cavity Dimension-MM	About 180×180×31 (IN)
Mounting Cavity Connector	2×N female+1×PG16
Weight-KG	About 2
Radome material and color	ABS (White)
Mounting Cavity color	Gray
Mechanical tilt-°	0 to 60
Operational Temperature-°C	-40 to 60
Storage Temperature-°C	-55 to 85
Relative Humidity-%	5 to 95
Rated Wind Velocity-M/S	60
Mounting way	Mast 【Φ40 to 50】



## Installation Demonstrations

