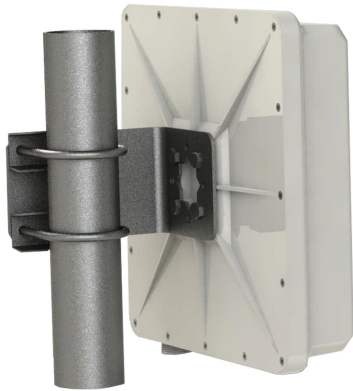




## Antenna with mounting cavity



- Model: FTD-24CPB14VH30C
- Name: Antenna with mounting cavity
- Freq.Range: 2400 to 2500 MHz
- Communications system:  
2.4GHz WLAN/WIFI/ISM/UNII/RFID,  
Spread Spectrum Communication
- Application scenario: Bridge antenna,  
Point to point, Point to multipoint,  
Outdoor signal directional coverage,  
Wireless data and image transmission,  
Wireless bridging, IEEE802.11b/g

Tip: Pictures are for reference only.  
Please refer to physical objects.

| Electrical Specifications |                         |
|---------------------------|-------------------------|
| Freq.Range-MHz            | 2400 to 2500            |
| Bandwidth-MHz             | 100                     |
| Polarization              | Vertical and Horizontal |
| Gain-dBi                  | 14                      |
| Beam Electrical Uptilt-°  | 0                       |
| Half-power beam width-°   | H:36 E:36               |
| Cross-pol-isolation-dB    | ≥ 22                    |
| F/B-dB                    | ≥ 20                    |
| Impedance-Ω               | 50                      |
| VSWR                      | ≤ 2.0                   |
| Max.Power-W               | 20                      |
| Lightning Protection      | DC Grounded             |

| Mechanical Specifications    |                            |
|------------------------------|----------------------------|
| Connector                    | 2×RPSMA male or Customized |
| Cable Length-CM              | 15CM or Customized         |
| Antenna Dimension-MM         | About 260×250×76           |
| Mounting Cavity Dimension-MM | About 220×220×20 (IN)      |
| Mounting Cavity Connector    | 2×N female+1×PG16          |
| Weight-KG                    | About 1.1                  |
| Radome material              | ABS                        |
| Radome color                 | White                      |
| Mechanical tilt-°            | 0 to 60                    |
| Operational Temperature-°C   | -40 to 60                  |
| Storage Temperature-°C       | -55 to 85                  |
| Relative Humidity-%          | 5 to 95                    |
| Rated Wind Velocity-M/S      | 60                         |
| Mounting way                 | Mast 【Φ40 to 50】           |



## **Installation Demonstrations**

