



## Antenna with mounting cavity



- Model: FTD-24CPE12VH60
- Name: Antenna with mounting cavity
- Freq.Range: 2400 to 2500 MHz
- Communications system:  
2.4GHz WLAN/WIFI/ISM/UNII/RFID,  
Spread Spectrum Communication
- Application scenario: Bridge antenna,  
Point to point, Point to multipoint,  
Outdoor signal directional coverage,  
Wireless data and image transmission,  
Wireless bridging, IEEE802.11b/g

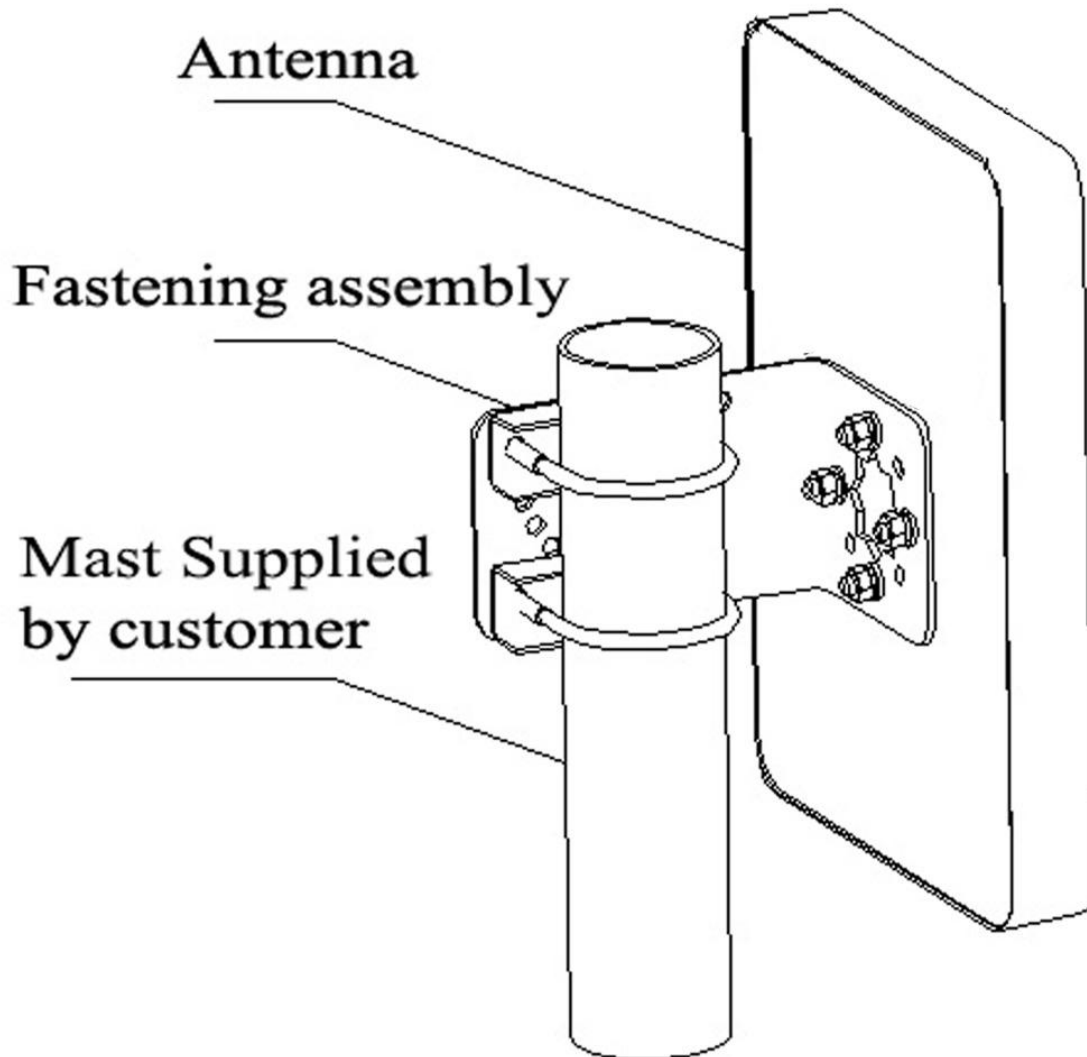
Tip: Pictures are for reference only.  
Please refer to physical objects.

Electrical Specifications	
Freq.Range-MHz	2400 to 2500
Bandwidth-MHz	100
Polarization	Vertical and Horizontal
Gain-dBi	12
Beam Electrical Uptilt-°	0
Half-power beam width-°	H:65 E:25
Cross-pol-isolation-dB	≥ 20
F/B-dB	≥ 20
Impedance-Ω	50
VSWR	≤ 1.5
Max.Power-W	20
Lightning Protection	DC Grounded

Mechanical Specifications	
Connector	2×U.FL or Customized
Cable Length-CM	9CM or Customized
Antenna Dimension-MM	About 255×110×53
Mounting Cavity Dimension-MM	About 190×100 (IN)
Weight-KG	About 0.3
Radome material	ABS
Radome color	White
Mechanical tilt-°	0 to 60
Operational Temperature-°C	-40 to 60
Storage Temperature-°C	-55 to 85
Relative Humidity-%	5 to 95
Rated Wind Velocity-M/S	60
Mounting way	Mast
Mast Diameter-MM	Φ35 to 50



## Installation Demonstrations



## Typical pattern

