



# Directional Flat Panel Antenna



Tip: Pictures are for reference only.  
Please refer to physical objects.

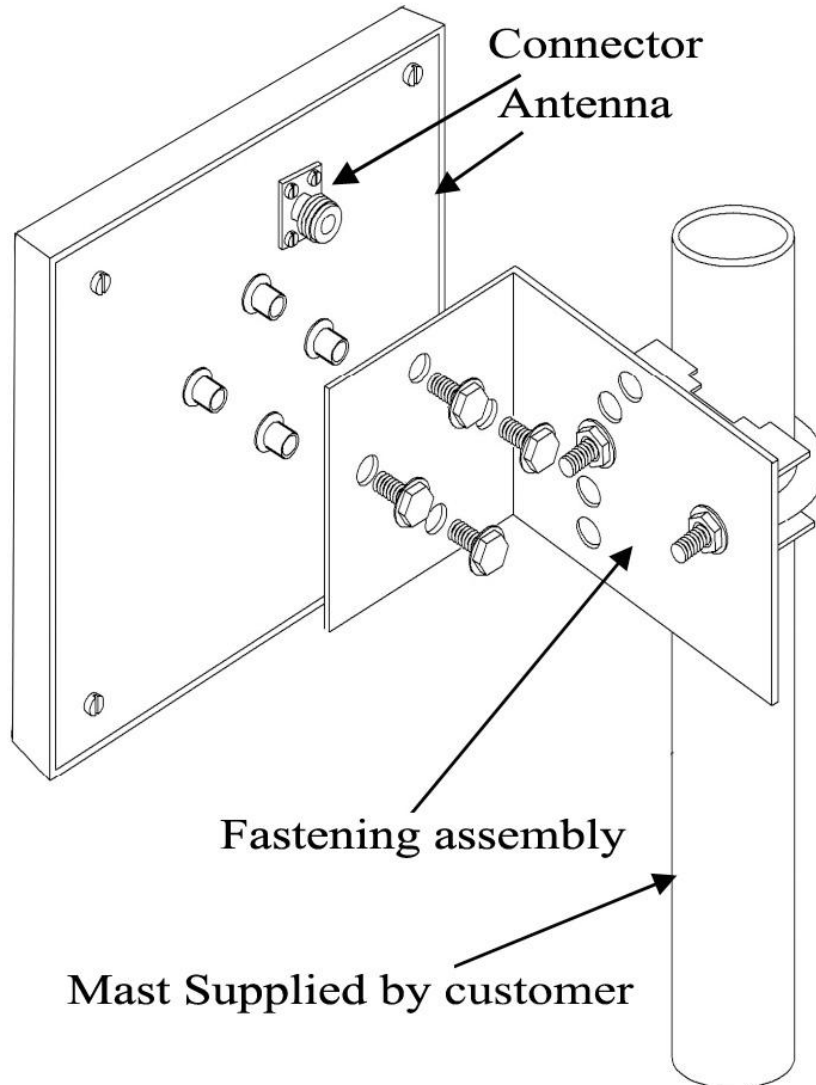
- Model: FTD-24PB14R30A
- Name: Directional Flat Panel Antenna
- Freq.Range: 2400 to 2500 MHz
- Communications system:
  - 2.4GHz WLAN/WIFI/ISM/UNII,
  - 2.4GHz Spread Spectrum Communication
- Application scenario:
  - Point to point, Point to multipoint,
  - Wireless data and image transmission,
  - Outdoor signal directional coverage,
  - Public wireless hotspot coverage,
  - IEEE802.11b/g

Electrical Specifications	
Freq.Range-MHz	2400 to 2500
Bandwidth-MHz	100
Polarization	Circular
Gain-dBi	14
Beam Electrical Downtilt-°	0
Half-power beam width-°	H:30 E:30
F/B-dB	≥ 25
Impedance-Ω	50
VSWR	≤ 1.5
Max.Power-W	50
Lightning Protection	DC Grounded

Mechanical Specifications	
Connector	N female
Connector Position	Back
Dimension-MM	About 190×190×40
Weight-KG	About 1
Radome material	ABS
Radome color	White
Mechanical tilt-°	0 to 30
Operational Temperature-°C	-40 to 60
Storage Temperature-°C	-55 to 85
Relative Humidity-%	5 to 95
Rated Wind Velocity-M/S	60
Mounting way	Mast
Mast Diameter-MM	Φ35 to 50



## Installation Demonstrations



## Typical pattern

