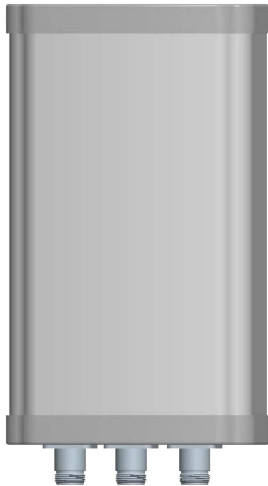




# Directional MIMO Sector Antenna



- Model: FTD-24MSH09VH65-3
- Name: Directional MIMO Sector Antenna
- Freq.Range: 2400 to 2500 MHz
- Communications system:  
2.4GHz WLAN/WIFI/MIMO,  
Spread Spectrum Communication
- Application scenario:  
Point to multipoint, Base station antenna,  
Outdoor signal directional coverage,  
Wireless data and image transmission,  
Public wireless hotspot coverage,  
IEEE802.11b/g

Tip: Pictures are for reference only.  
Please refer to physical objects.

## Electrical Specifications

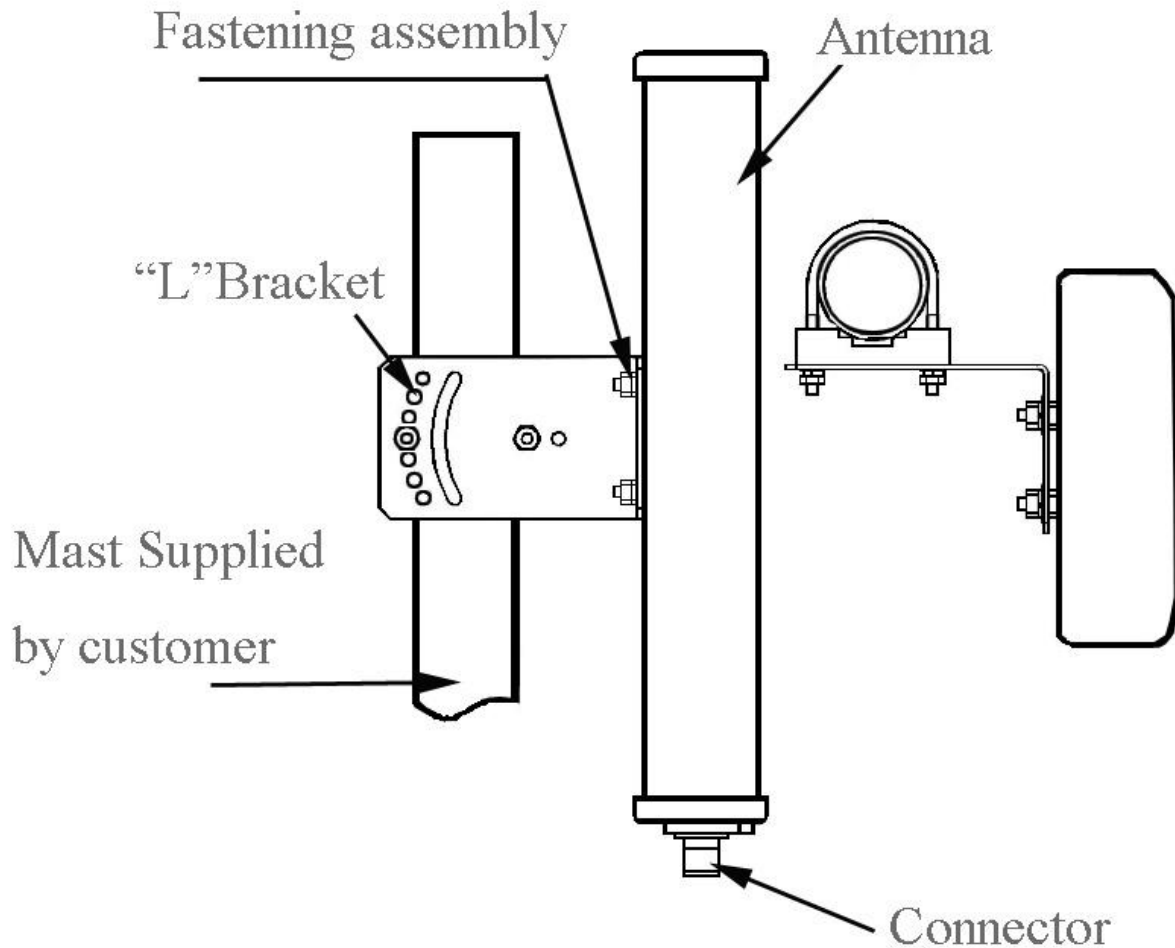
Freq.Range-MHz	2400 to 2500
Bandwidth-MHz	100
Polarization	1×Vertical and 2×Horizontal
Gain-dBi	9
Beam Electrical Downtilt-°	0
Half-power beam width-°	H:65 E:60
Cross-pol-isolation-dB	≥25
F/B-dB	≥ 20
Impedance-Ω	50
VSWR	≤ 1.5
Max.Power-W	100
Lightning Protection	DC Grounded

## Mechanical Specifications

Connector	3×N female
Connector Position	Bottom
Dimension-MM	About 230×128×56
Weight-KG	About 1.5
Radome material	UPVC
Radome color	Gray
Mechanical tilt-°	0 to 15
Operational Temperature-°C	-40 to 60
Storage Temperature-°C	-55 to 85
Relative Humidity-%	5 to 95
Rated Wind Velocity-M/S	60
Mounting way	Mast
Mast Diameter-MM	Φ35 to 50



## Installation Demonstrations



## Typical pattern

