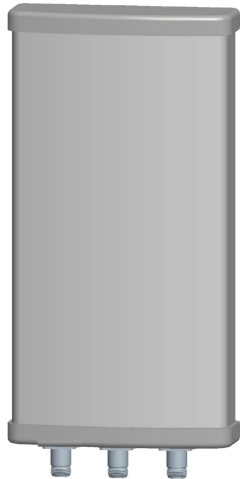




Directional MIMO Sector Antenna



- Model: FTD-24MSH14VH90A-3
- Name: Directional MIMO Sector Antenna
- Freq.Range: 2400 to 2500 MHz
- Communications system:
2.4GHz WLAN/WIFI/ISM/MIMO,
Spread Spectrum Communication
- Application scenario:
Point to multipoint, Base station antenna,
Outdoor signal directional coverage,
Wireless data and image transmission,
Public wireless hotspot coverage,
IEEE802.11b/g

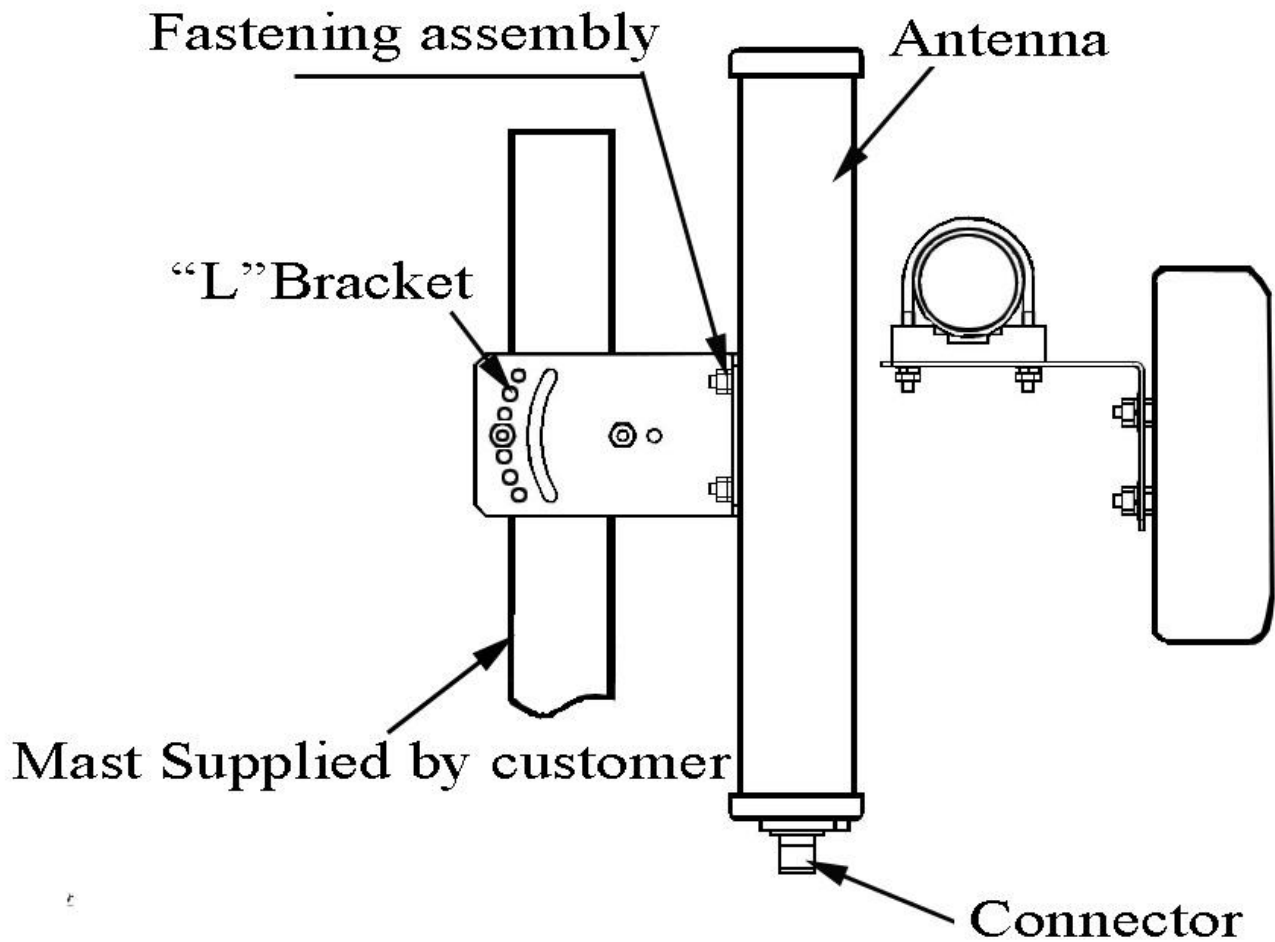
Tip: Pictures are for reference only.
Please refer to physical objects.

Electrical Specifications	
Freq.Range-MHz	2400 to 2500
Bandwidth-MHz	100
Polarization	2×Vertical and 1×Horizontal
Gain-dBi	14
Beam Electrical Downtilt-°	0
Half-power beam width-°	H:90 E:15
Cross-pol-isolation-dB	≥25
F/B-dB	≥ 23
Impedance-Ω	50
VSWR	≤ 1.5
Max.Power-W	100
Lightning Protection	DC Grounded

Mechanical Specifications	
Connector	3×N female
Connector Position	Bottom
Dimension-MM	About 470×167×55
Weight-KG	About 1.8
Radome material	UPVC
Radome color	Gray
Mechanical tilt-°	0 to 15
Operational Temperature-°C	-40 to 60
Storage Temperature-°C	-55 to 85
Relative Humidity-%	5 to 95
Rated Wind Velocity-M/S	60
Mounting way	Mast
Mast Diameter-MM	Φ35 to 50



Installation Demonstrations



Typical pattern

