



Directional MIMO Sector Antenna



Tip: Pictures are for reference only.
Please refer to physical objects.

- Model: FTD-24MSH15VH65A-3
- Name: Directional MIMO Sector Antenna
- Freq.Range: 2400 to 2500 MHz
- Communications system:
2.4GHz WLAN/WIFI/ISM/MIMO,
Spread Spectrum Communication
- Application scenario:
Point to multipoint, Base station antenna,
Outdoor signal directional coverage,
Wireless data and image transmission,
Public wireless hotspot coverage,
IEEE802.11b/g

Electrical Specifications

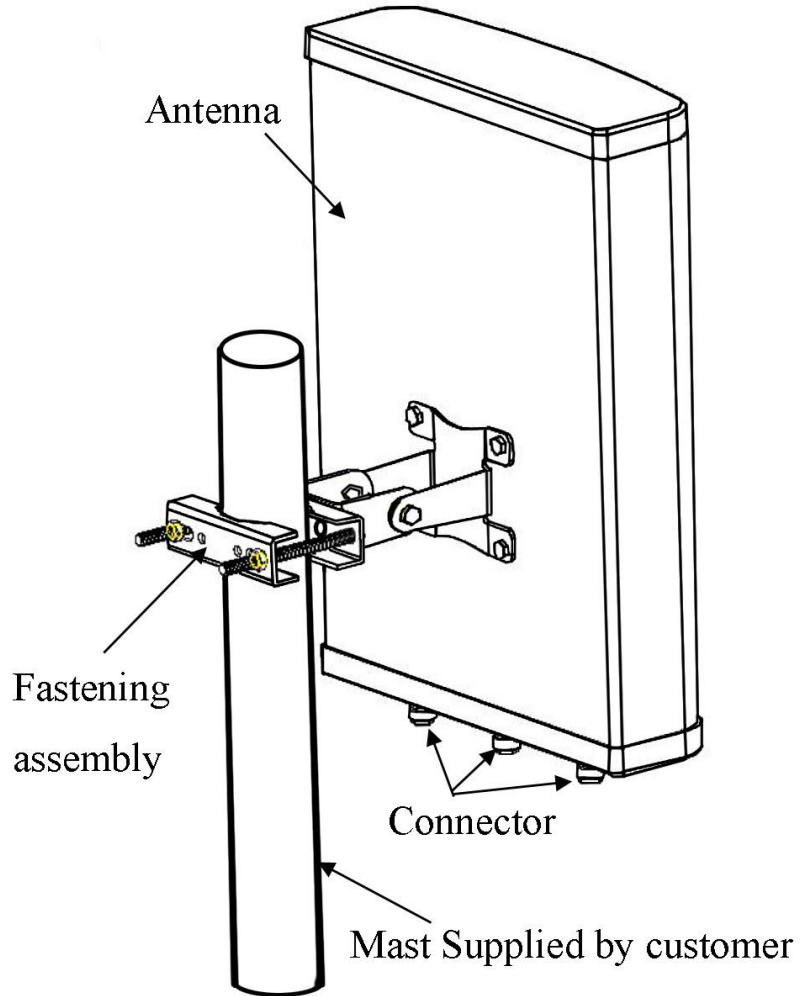
Freq.Range-MHz	2400 to 2500
Bandwidth-MHz	100
Polarization	2×Vertical and 1×Horizontal
Gain-dBi	15
Beam Electrical Downtilt-°	0
Half-power beam width-°	H:65 E:16
Cross-pol-isolation-dB	≥28
F/B-dB	≥ 23
Impedance-Ω	50
VSWR	≤ 1.5
Max.Power-W	100
Lightning Protection	DC Grounded

Mechanical Specifications

Connector	3×N female
Connector Position	Bottom
Dimension-MM	About 420×280×85
Weight-KG	About 2.4
Radome material	UPVC
Radome color	Gray
Mechanical tilt-°	0 to 15
Operational Temperature-°C	-40 to 60
Storage Temperature-°C	-55 to 85
Relative Humidity-%	5 to 95
Rated Wind Velocity-M/S	60
Mounting way	Mast
Mast Diameter-MM	Φ35 to 75



Installation Demonstrations



Typical pattern

