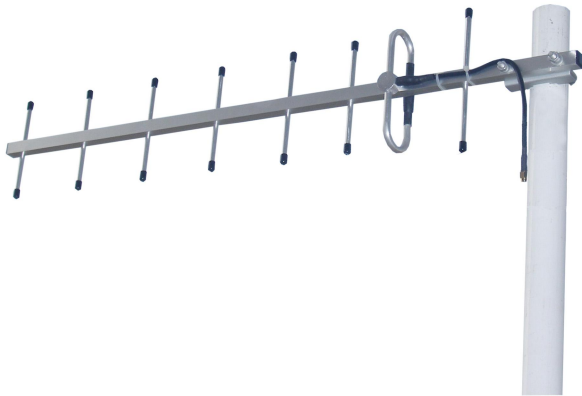




Directional Yagi Antenna



- Model: FTD-2527BM11V08A
- Name: Directional Yagi Antenna
- Freq.Range: 2500 to 2700 MHz
- Communications system:
 - MMDS Wireless digital television system,
 - Microwave communication system
- Application scenario: Client antenna,
Point to point, Point to multipoint,
Long-distance communication

Tip: Pictures are for reference only.
Please refer to physical objects.

Electrical Specifications

Freq.Range-MHz	2500 to 2700
Bandwidth-MHz	200
Unit	8
Polarization	Vertical or Horizontal
Gain-dBi	11.2
Horizontal Beamwidth-°	48
Vertical Beamwidth-°	40
F/B-dB	≥ 15
Impedance-Ω	50
VSWR	≤ 1.5
Max.Power-W	100

Mechanical Specifications

Connector	N female or customized
Connector Position	Cable outgoing
Length-CM	About 48
Weight-KG	About 0.6
Radome material	Aluminium alloy
Operational Temperature-°C	-40 to 60
Storage Temperature-°C	-55 to 85
Relative Humidity-%	5 to 95
Rated Wind Velocity-M/S	60
Mounting way	Mast
Mast Diameter-MM	Φ40 to 50



Installation Demonstrations

