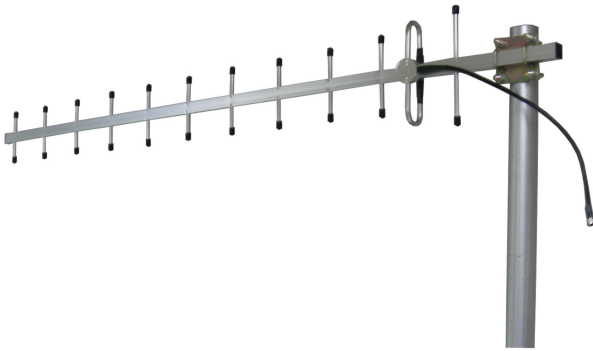




## Directional Yagi Antenna



- Model: FTD-2527BM12V12A
- Name: Directional Yagi Antenna
- Freq.Range: 2500 to 2700 MHz
- Communications system:
  - MMDS Wireless digital television system,
  - Microwave communication system
- Application scenario: Client antenna,  
Point to point, Point to multipoint,  
Long-distance communication

Tip: Pictures are for reference only.  
Please refer to physical objects.

### Electrical Specifications

Freq.Range-MHz	2500 to 2700
Bandwidth-MHz	200
Unit	12
Polarization	Vertical or Horizontal
Gain-dBi	12
Horizontal Beamwidth-°	36
Vertical Beamwidth-°	32
F/B-dB	≥ 16
Impedance-Ω	50
VSWR	≤ 1.5
Max.Power-W	100

### Mechanical Specifications

Connector	N female or customized
Connector Position	Cable outgoing
Length-CM	About 60
Weight-KG	About 0.9
Radome material	Aluminium alloy
Operational Temperature-°C	-40 to 60
Storage Temperature-°C	-55 to 85
Relative Humidity-%	5 to 95
Rated Wind Velocity-M/S	60
Mounting way	Mast
Mast Diameter-MM	Φ40 to 50



## Installation Demonstrations

