



# Directional Sector Antenna



- Model: FTD-3338SH15VP120A
- Name: Directional Sector Antenna
- Freq.Range: 3300 to 3800 MHz
- Communications system: 5G,  
Wireless trunking communication system,  
Mobile communication wireless  
network optimization
- Application scenario: Point to multipoint,  
Base station antenna, Repeater antenna,  
Outdoor signal directional coverage,  
Wireless data and image transmission

Tip: Pictures are for reference only.  
Please refer to physical objects.

## Electrical Specifications

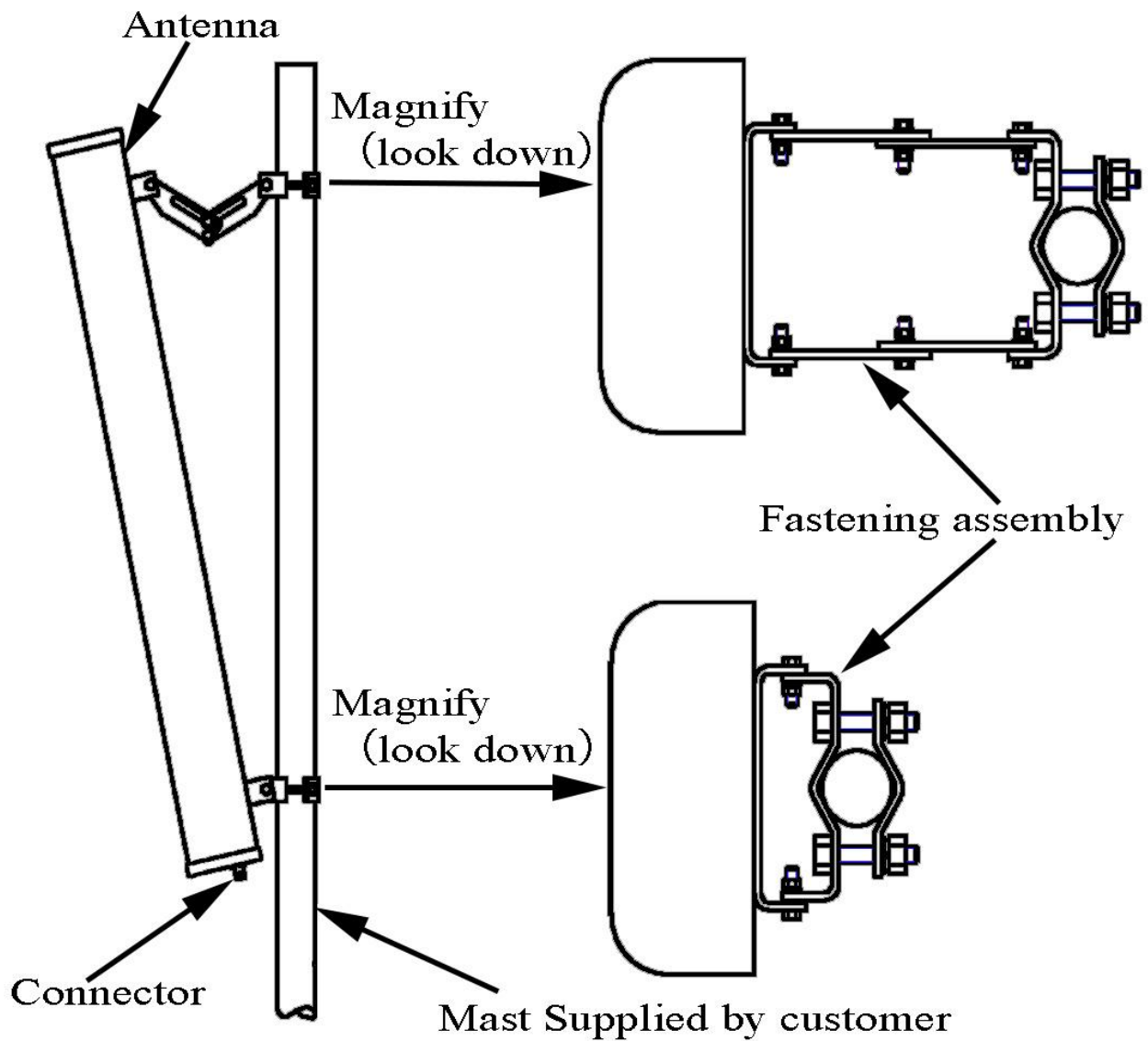
|                            |              |
|----------------------------|--------------|
| Freq.Range-MHz             | 3300 to 3800 |
| Bandwidth-MHz              | 500          |
| Polarization               | Vertical     |
| Gain-dBi                   | 15           |
| Beam Electrical Downtilt-° | 0            |
| Half-power beam width-°    | H:120 E:7.5  |
| F/B-dB                     | ≥ 20         |
| Impedance-Ω                | 50           |
| VSWR                       | ≤ 1.5        |
| Max.Power-W                | 100          |
| Lightning Protection       | DC Grounded  |

## Mechanical Specifications

|                            |                  |
|----------------------------|------------------|
| Connector                  | N female         |
| Connector Position         | Bottom           |
| Dimension-MM               | About 650×128×56 |
| Weight-KG                  | About 2.7        |
| Radome material            | UPVC             |
| Radome color               | Gray             |
| Mechanical tilt-°          | 0 to 15          |
| Operational Temperature-°C | -40 to 60        |
| Storage Temperature-°C     | -55 to 85        |
| Relative Humidity-%        | 5 to 95          |
| Rated Wind Velocity-M/S    | 60               |
| Mounting way               | Mast             |
| Mast Diameter-MM           | Φ35 to 75        |



## Installation Demonstrations



## Typical pattern & Communication channel

