



Directional Sector Antenna



- Model: FTD-3338SH16DP90A
- Name: Directional Sector Antenna
- Freq.Range: 3300 to 3800 MHz
- Communications system: 5G,
Wireless trunking communication system,
Mobile communication wireless
network optimization
- Application scenario: Point to multipoint,
Base station antenna, Repeater antenna,
Outdoor signal directional coverage,
Wireless data and image transmission

Tip: Pictures are for reference only.
Please refer to physical objects.

Electrical Specifications

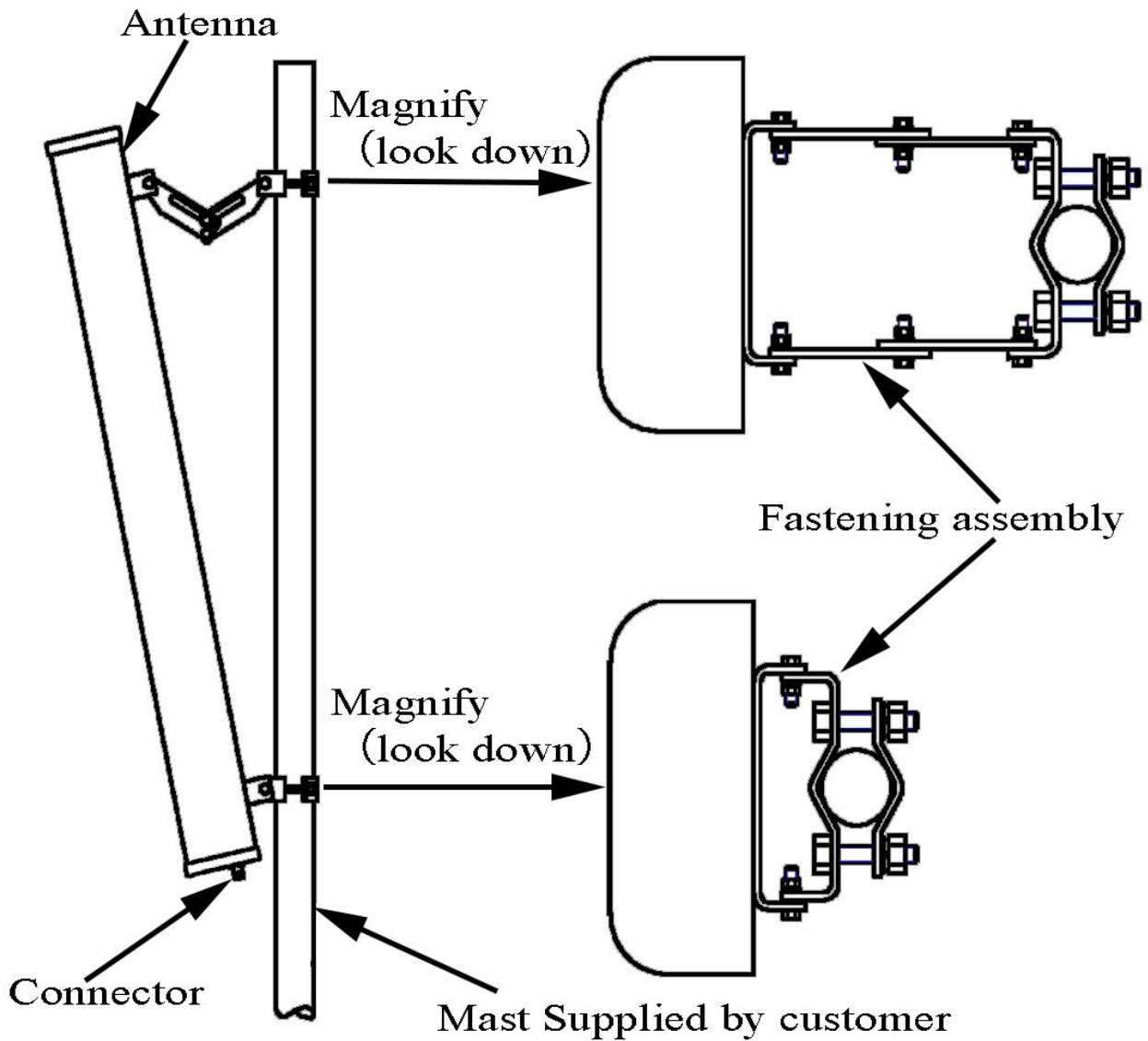
Freq.Range-MHz	3300 to 3800
Bandwidth-MHz	500
Polarization	±45°
Gain-dBi	16
Beam Electrical Downtilt-°	0
Half-power beam width-°	H:90 E:7.5
F/B-dB	≥ 23
Cross-pol-isolation-dB	≥28
Impedance-Ω	50
VSWR	≤ 1.5
Max.Power-W	100
Lightning Protection	DC Grounded

Mechanical Specifications

Connector	2×N female
Connector Position	Bottom
Dimension-MM	About 650×128×56
Weight-KG	About 2.7
Radome material	UPVC
Radome color	Gray
Mechanical tilt-°	0 to 15
Operational Temperature-°C	-40 to 60
Storage Temperature-°C	-55 to 85
Relative Humidity-%	5 to 95
Rated Wind Velocity-M/S	60
Mounting way	Mast
Mast Diameter-MM	Φ35 to 75



Installation Demonstrations



Typical pattern & Communication channel

