



Directional MIMO Flat Panel Antenna



- Model: FTD-3436MPB15VH25-4
- Name: Directional MIMO Flat Panel Antenna
- Freq.Range: 3400 to 3600 MHz
- Communications system: 5G/WIMAX, Wireless trunking communication system, 3.5GHz Wireless access communication system
- Application scenario: Point to Point, Point to multipoint, Wireless data and image transmission, Outdoor signal directional coverage

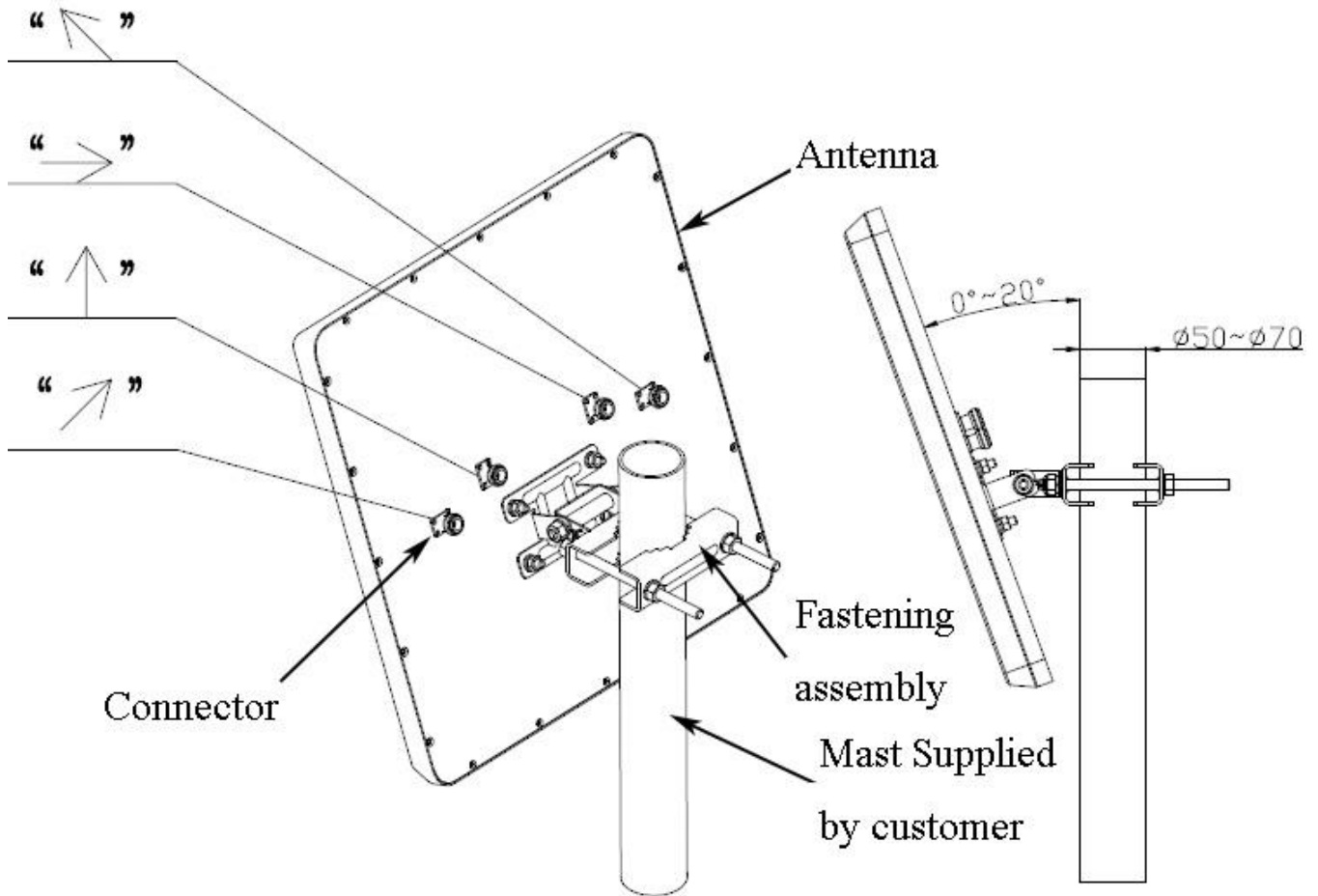
Tip: Pictures are for reference only.
Please refer to physical objects.

Electrical Specifications	
Freq.Range-MHz	3400 to 3600
Bandwidth-MHz	200
Polarization	2×Vertical and 2×Horizontal
Gain-dBi	15
Half-power beam width-°	H:25 E:22
Cross-pol-isolation-dB	≥ 40
F/B-dB	≥ 20
Impedance-Ω	50
VSWR	≤ 1.5
Max.Power-W	200
Lightning Protection	DC Grounded

Mechanical Specifications	
Connector	4×N female
Connector Position	Back
Dimension-MM	About 380×380×33
Weight-KG	About 1.8
Radome material	ABS
Radome color	White
Mechanical tilt-°	0 to 60
Operational Temperature-°C	-40 to 60
Storage Temperature-°C	-55 to 85
Relative Humidity-%	5 to 95
Rated Wind Velocity-M/S	60
Mounting way	Mast
Mast Diameter-MM	Φ50 to 70



Installation Demonstrations



Typical pattern & Communication channel

