



Directional Flat Panel Antenna



- Model: FTD-3436PB16V30A
- Name: Directional Flat Panel Antenna
- Freq.Range: 3400 to 3600 MHz
- Communications system: WIMAX, 3.5GHz Wireless access communication system
- Application scenario:
Point to point, Point to multipoint,
Wireless data and image transmission,
Outdoor signal directional coverage

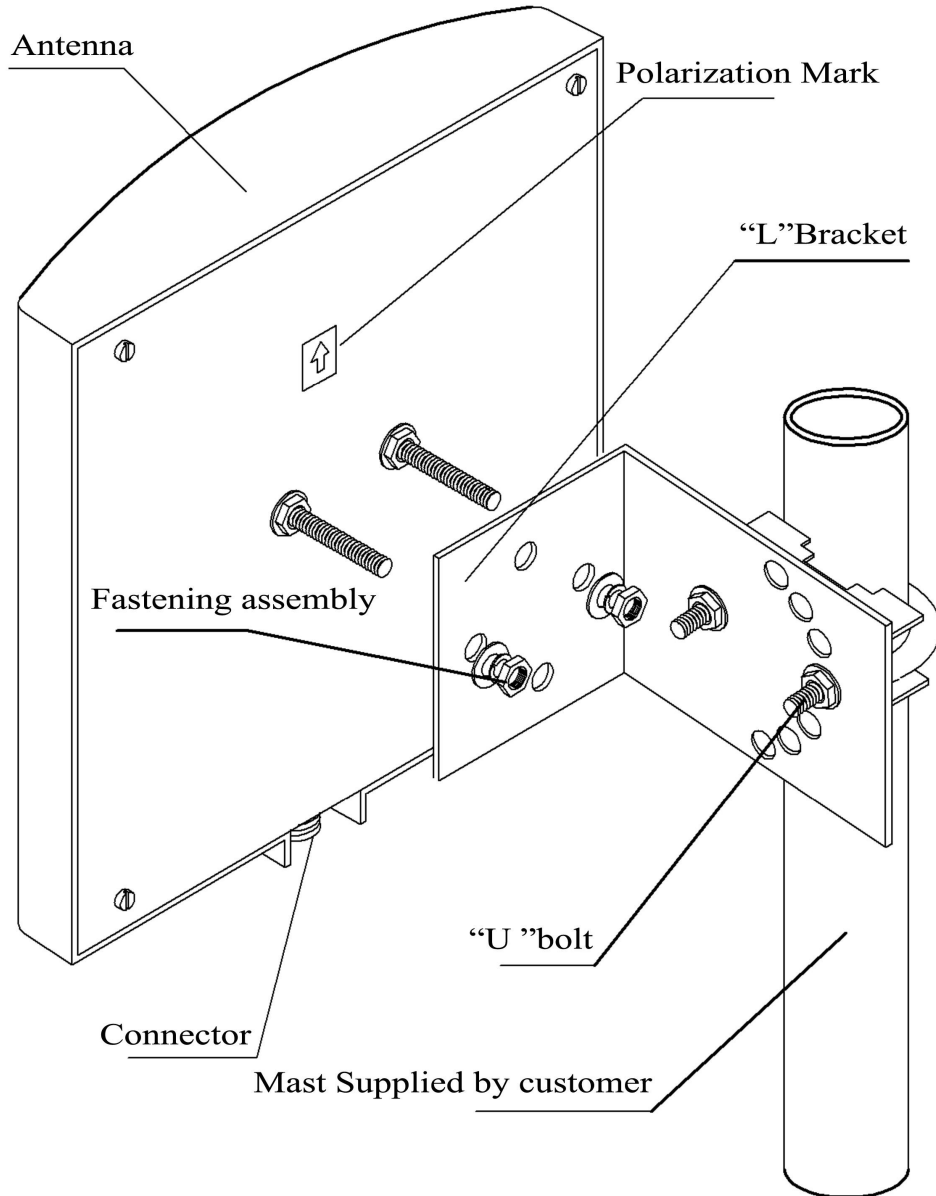
Tip: Pictures are for reference only.
Please refer to physical objects.

Electrical Specifications	
Freq.Range-MHz	3400 to 3600
Bandwidth-MHz	200
Polarization	Vertical
Gain-dBi	16
Beam Electrical Downtilt-°	0
Half-power beam width-°	H:30 E:28
F/B-dB	≥ 25
Impedance-Ω	50
VSWR	≤ 1.5
Max.Power-W	50
Lightning Protection	DC Grounded

Mechanical Specifications	
Connector	N female
Connector Position	Bottom
Dimension-MM	About 223×194×46
Weight-KG	About 1.2
Radome material	ABS
Radome color	White
Mechanical tilt-°	-20 to 20
Operational Temperature-°C	-40 to 60
Storage Temperature-°C	-55 to 85
Relative Humidity-%	5 to 95
Rated Wind Velocity-M/S	60
Mounting way	Mast
Mast Diameter-MM	Φ35 to 50



Installation Demonstrations



Typical pattern

