



## Directional Flat Panel Antenna



- Model: FTD-4959PB23VH11E
- Name: Directional Flat Panel Antenna
- Freq.Range: 4900 to 5900 MHz
- Communications system:  
4.9 to 5.9GHz WLAN/WIFI/ISM/UNII,  
4.9 to 5.9GHz Spread Spectrum Communication
- Application scenario: Bridging antenna,  
Point to point, Point to multipoint,  
Wireless data and image transmission,  
Wireless bridging, IEEE802.11a/n

Tip: Pictures are for reference only.  
Please refer to physical objects.

### Electrical Specifications

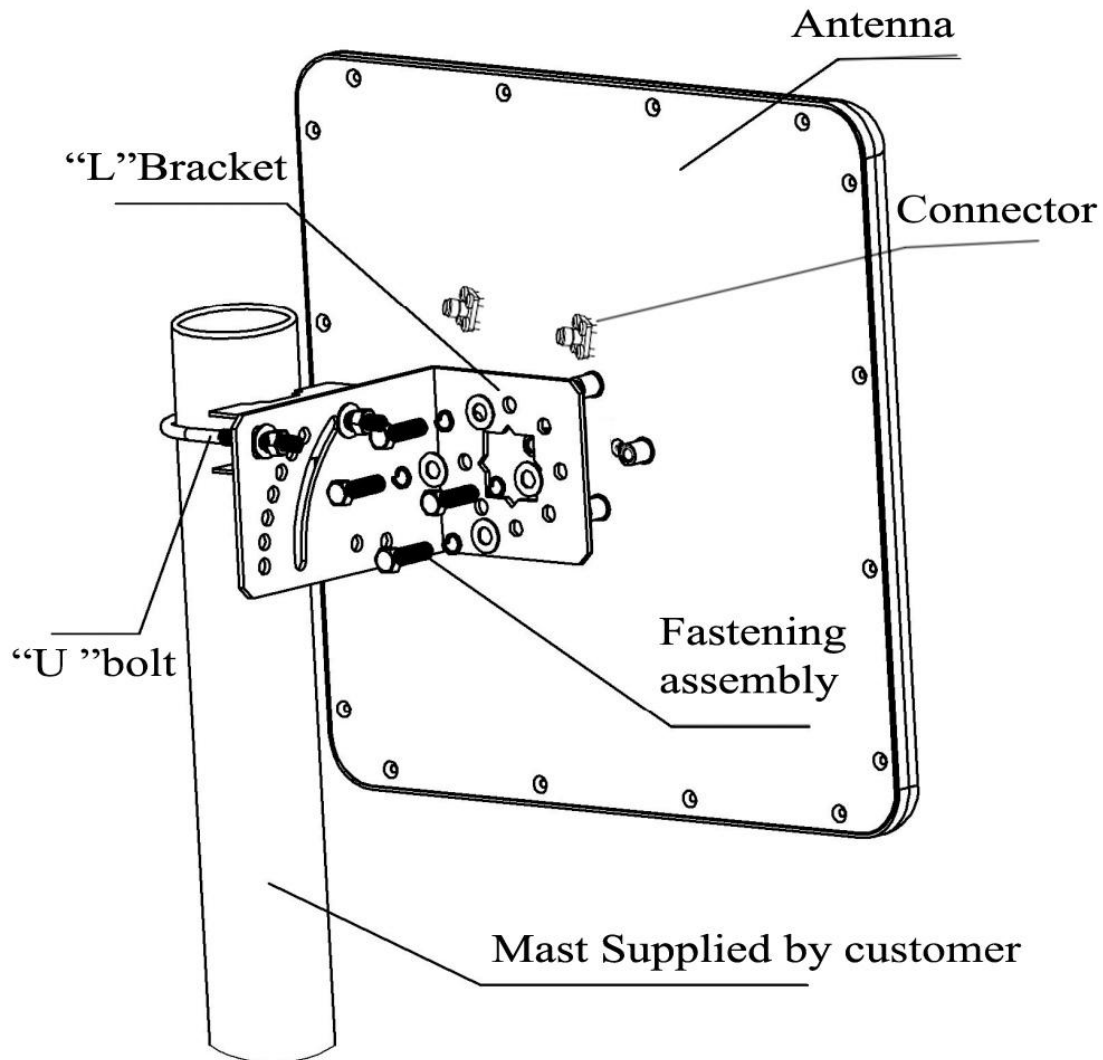
Freq.Range-MHz	4900 to 5900
Bandwidth-MHz	1000
Polarization	Vertical and Horizontal
Gain-dBi	23
Beam Electrical Downtilt-°	0
Half-power beam width-°	H:11 E:11
Cross-pol-isolation-dB	≥ 25
F/B-dB	≥ 28
Impedance-Ω	50
VSWR	≤ 2.0
Max.Power-W	50
Lightning Protection	DC Grounded

### Mechanical Specifications

Connector	2×N female or Customized
Connector Position	Back
Dimension-MM	About 306×306×25
Weight-KG	About 1.5
Radome material	ABS
Radome color	White
Mechanical tilt-°	0 to 60
Operational Temperature-°C	-40 to 60
Storage Temperature-°C	-55 to 85
Relative Humidity-%	5 to 95
Rated Wind Velocity-M/S	60
Mounting way	Mast
Mast Diameter-MM	Φ35 to 50



## Installation Demonstrations



## Typical pattern & Communication channel

