



Directional Sector Antenna



- Model: FTD-4960SH18VH90A
- Name: Directional Sector Antenna
- Freq.Range: 4900 to 6000 MHz
- Communications system:
5G/WALN/WIFI/ISM/UNII,
Spread Spectrum Communication
- Application scenario:
Point to multipoint, Base station antenna,
Outdoor signal directional coverage,
Wireless data and image transmission,
Public wireless hotspot coverage

Tip: Pictures are for reference only.
Please refer to physical objects.

Electrical Specifications

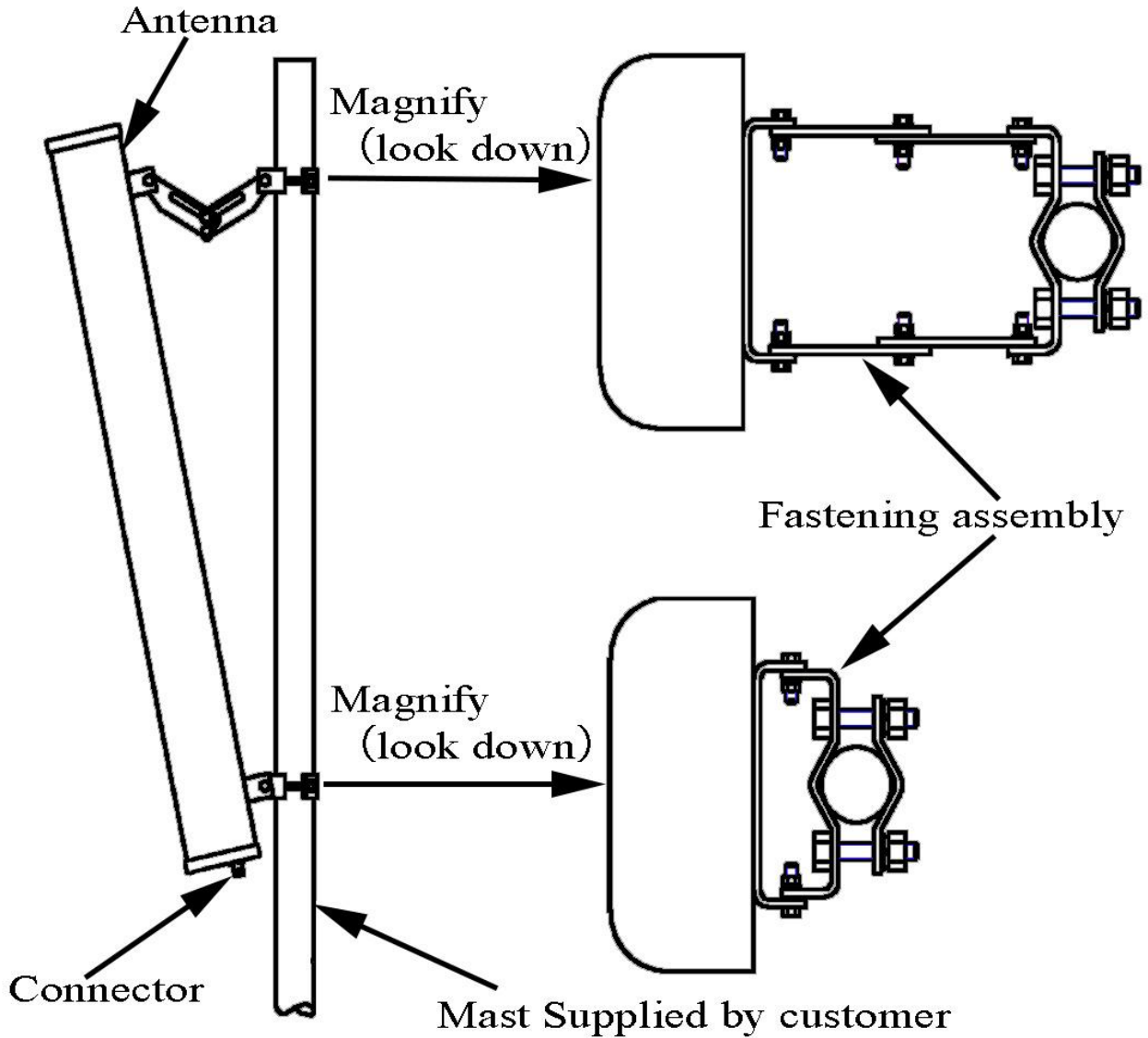
Freq.Range-MHz	4900 to 6000
Bandwidth-MHz	1100
Polarization	Vertical and Horizontal
Gain-dBi	2×18
Beam Electrical Downtilt-°	0
Half-power beam width-°	H:90 E:4
F/B-dB	≥ 20
Cross-pol-isolation-dB	≥ 28
Impedance-Ω	50
VSWR	≤ 2.0
Max.Power-W	50
Lightning Protection	DC Grounded

Mechanical Specifications

Connector	2×N female
Connector Position	Bottom
Dimension-MM	About 760×128×56
Weight-KG	About 3
Radome material	UPVC
Radome color	Gray
Mechanical tilt-°	0 to 15
Operational Temperature-°C	-40 to 60
Storage Temperature-°C	-55 to 85
Relative Humidity-%	5 to 95
Rated Wind Velocity-M/S	60
Mounting way	Mast
Mast Diameter-MM	Φ35 to 75



Installation Demonstrations



Typical pattern & Communication channel

