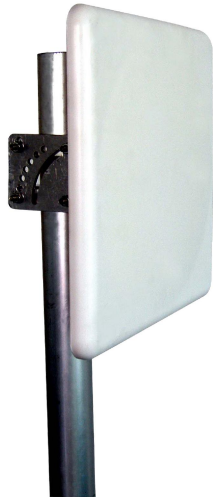




Directional MIMO Flat Panel Antenna



- Model: FTD-5158MPB17VH20-3
- Name: Directional MIMO Flat Panel Antenna
- Freq.Range: 5150 to 5850 MHz
- Communications system:
5.1 to 5.8GHz WLAN/WIFI/ISM/UNII/MIMO,
5.1 to 5.8GHz Spread Spectrum Communication
- Application scenario:
Point to Point, Point to multipoint,
Wireless data and image transmission,
Outdoor signal directional coverage,
Public wireless hotspot coverage,
IEEE802.11a/n

Tip: Pictures are for reference only.
Please refer to physical objects.

| Electrical Specifications | |
|---------------------------|-----------------------------|
| Freq.Range-MHz | 5150 to 5850 |
| Bandwidth-MHz | 700 |
| Polarization | 2×Vertical and 1×Horizontal |
| Gain-dBi | 17 |
| Half-power beam width-° | H:20 E:20 |
| Cross-pol-isolation-dB | ≥ 25 |
| F/B-dB | ≥ 25 |
| Impedance-Ω | 50 |
| VSWR | ≤ 2.0 |
| Max.Power-W | 50 |
| Lightning Protection | DC Grounded |

| Mechanical Specifications | |
|----------------------------|------------------|
| Connector | 3×N female |
| Connector Position | Back |
| Dimension-MM | About 306×306×25 |
| Weight-KG | About 1.4 |
| Radome material | ABS |
| Radome color | White |
| Mechanical tilt-° | 0 to 60 |
| Operational Temperature-°C | -40 to 60 |
| Storage Temperature-°C | -55 to 85 |
| Relative Humidity-% | 5 to 95 |
| Rated Wind Velocity-M/S | 60 |
| Mounting way | Mast |
| Mast Diameter-MM | Φ35 to 50 |



Installation Demonstrations

