



Antenna with mounting cavity



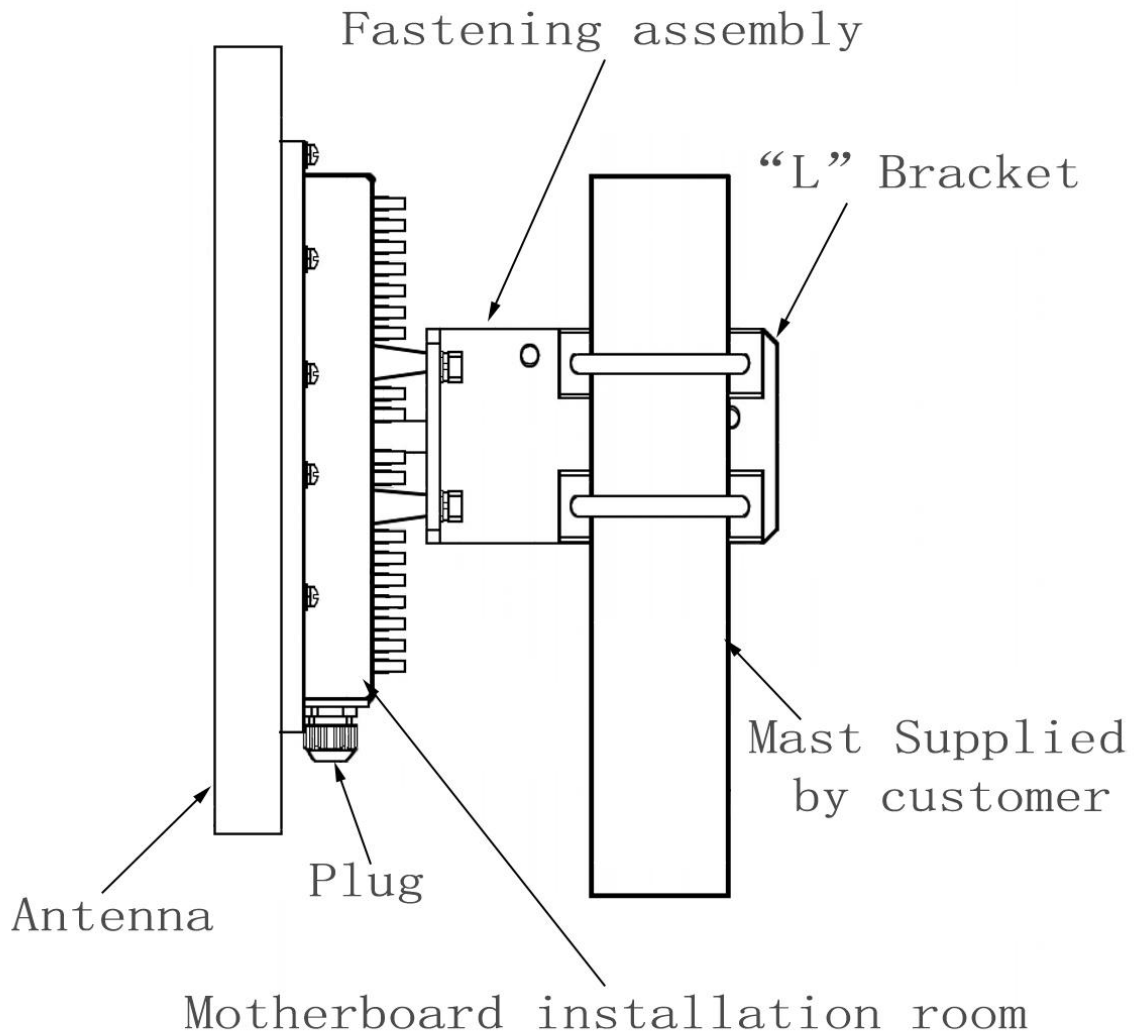
- Model: FTD-5158CPB18VH18C
- Name: Antenna with mounting cavity
- Freq.Range: 5150 to 5850 MHz
- Communications system:
5.1 to 5.8GHz WLAN/WIFI/ISM/UNII,
5.1 to 5.8GHz Spread Spectrum Communication
- Application scenario: Bridge antenna,
Point to point, Point to multipoint,
Outdoor signal directional coverage,
Wireless data and image transmission,
Wireless bridging, IEEE802.11a/n

Tip: Pictures are for reference only.
Please refer to physical objects.

Electrical Specifications	
Freq.Range-MHz	5150 to 5850
Bandwidth-MHz	700
Polarization	Vertical and Horizontal
Gain-dBi	18
Beam Electrical Uptilt-°	0
Half-power beam width-°	H:18 E:18
Cross-pol-isolation-dB	≥ 25
F/B-dB	≥ 25
Impedance-Ω	50
VSWR	≤ 2.0
Max.Power-W	20
Lightning Protection	DC Grounded
Mechanical Specifications	
Connector	2×MMCX Bend male or Customized
Cable Length-CM	20CM or Customized
Antenna Dimension-MM	About 250×250×25
Mounting Cavity Dimension-MM	About 185×105×30 (IN)
Mounting Cavity Connector	2×N female+1×PG16
Weight-KG	About 2
Radome material and color	ABS (Gray)
Mounting Cavity color	Gray
Mechanical tilt-°	0 to 60
Operational Temperature-°C	-40 to 60
Storage Temperature-°C	-55 to 85
Relative Humidity-%	5 to 95
Rated Wind Velocity-M/S	60
Mounting way	Mast 【Φ35 to 50】



Installation Demonstrations



Typical pattern and Communication channel

