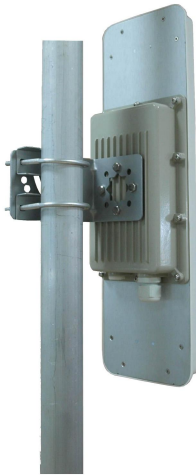




## Antenna with mounting cavity



- Model: FTD-5158CSH17VH65A
- Name: Antenna with mounting cavity
- Freq.Range: 5150 to 5850 MHz
- Communications system:  
5.1 to 5.8GHz WLAN/WIFI/ISM/UNII,  
5.1 to 5.8GHz Spread Spectrum Communication
- Application scenario:  
Bridge antenna, Point to multipoint,  
Outdoor signal directional coverage,  
Wireless data and image transmission,  
Public wireless hotspot coverage,  
Wireless bridging, IEEE802.11a/n

Tip: Pictures are for reference only.  
Please refer to physical objects.

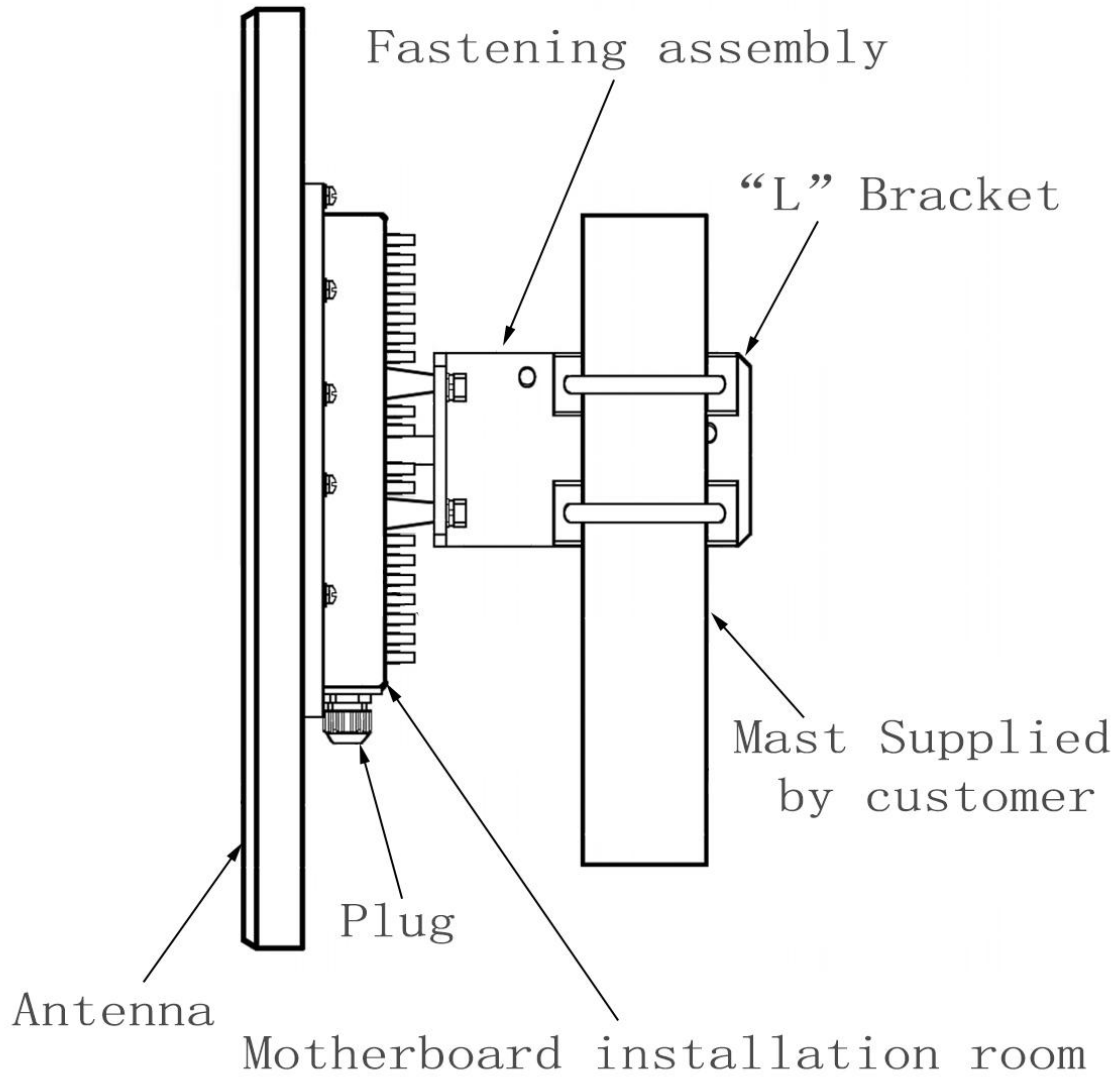
| Electrical Specifications |                         |
|---------------------------|-------------------------|
| Freq.Range-MHz            | 5150 to 5850            |
| Bandwidth-MHz             | 700                     |
| Polarization              | Vertical and Horizontal |
| Gain-dBi                  | 17                      |
| Beam Electrical Uptilt-°  | 0                       |
| Half-power beam width-°   | H:65 E:7                |
| Cross-pol-isolation-dB    | ≥ 28                    |
| F/B-dB                    | ≥ 23                    |
| Impedance-Ω               | 50                      |
| VSWR                      | ≤ 2.0                   |
| Max.Power-W               | 20                      |
| Lightning Protection      | DC Grounded             |

| Mechanical Specifications    |                                |
|------------------------------|--------------------------------|
| Connector                    | 2×MMCX Bend male or Customized |
| Cable Length-CM              | 15CM or Customized             |
| Antenna Dimension-MM         | About 450×140×30               |
| Mounting Cavity Dimension-MM | About 185×105×30 (IN)          |
| Mounting Cavity Connector    | 1×N female+1×PG16              |
| Weight-KG                    | About 2.3                      |
| Radome material and color    | ABS (White)                    |
| Mounting Cavity color        | Gray                           |
| Mechanical tilt-°            | 0 to 60                        |
| Operational Temperature-°C   | -40 to 60                      |
| Storage Temperature-°C       | -55 to 85                      |
| Relative Humidity-%          | 5 to 95                        |
| Rated Wind Velocity-M/S      | 60                             |
| Mounting way                 | Mast 【Φ35 to 50MM】             |



## Installation Demonstrations



## Typical pattern

