



Directional Flat Panel Antenna



- Model: FTD-5158PB12V60BL
- Name: Directional Flat Panel Antenna
- Freq.Range: 5150 to 5850 MHz
- Communications system:
 - 5.1 to 5.8GHz WLAN/WIFI/ISM/UNII,
 - 5.1 to 5.8GHz Spread Spectrum Communication
- Application scenario:
 - Point to point, Point to multipoint,
 - Wireless data and image transmission,
 - Outdoor signal directional coverage,
 - Public wireless hotspot coverage,
 - IEEE802.11a/n

Tip: Pictures are for reference only.
Please refer to physical objects.

Electrical Specifications

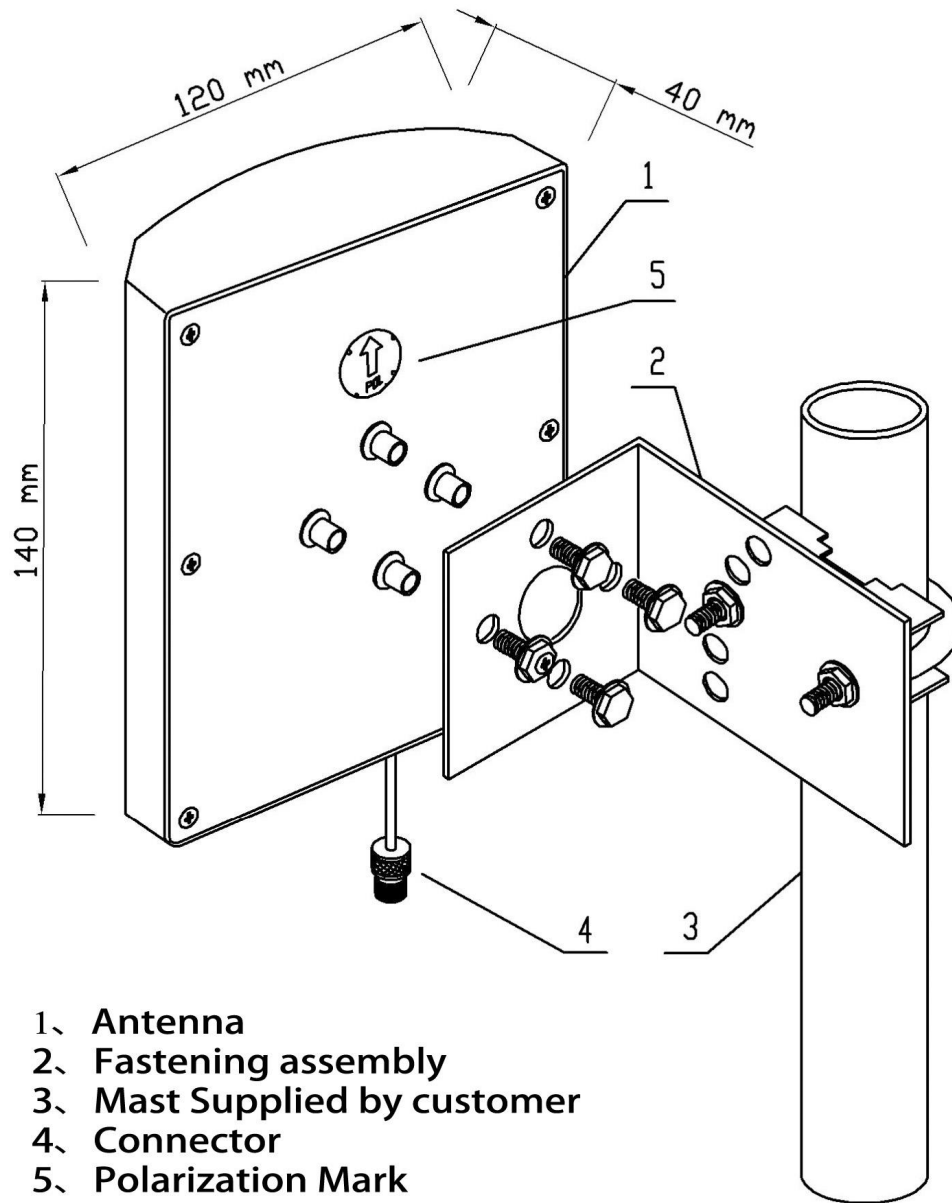
Freq.Range-MHz	5150 to 5850
Bandwidth-MHz	700
Polarization	Vertical
Gain-dBi	12
Beam Electrical Downtilt-°	0
Half-power beam width-°	H:60 E:30
F/B-dB	≥ 25
Impedance-Ω	50
VSWR	≤ 1.5
Max.Power-W	20
Lightning Protection	DC Grounded

Mechanical Specifications

Connector	N female or Customized
Connector Position	Cable outgoing
Cable Length-CM	15CM or Customized
Dimension-MM	About 140×120×40
Weight-KG	About 0.5
Radome material	ABS
Radome color	White
Mechanical tilt-°	0 to 30
Operational Temperature-°C	-40 to 60
Storage Temperature-°C	-55 to 85
Relative Humidity-%	5 to 95
Rated Wind Velocity-M/S	60
Mounting way	Mast
Mast Diameter-MM	Φ35 to 50



Installation Demonstrations



- 1、 Antenna
- 2、 Fastening assembly
- 3、 Mast Supplied by customer
- 4、 Connector
- 5、 Polarization Mark

Typical pattern&Communication channel

