



## Directional Flat Panel Antenna



Tip: Pictures are for reference only.  
Please refer to physical objects.

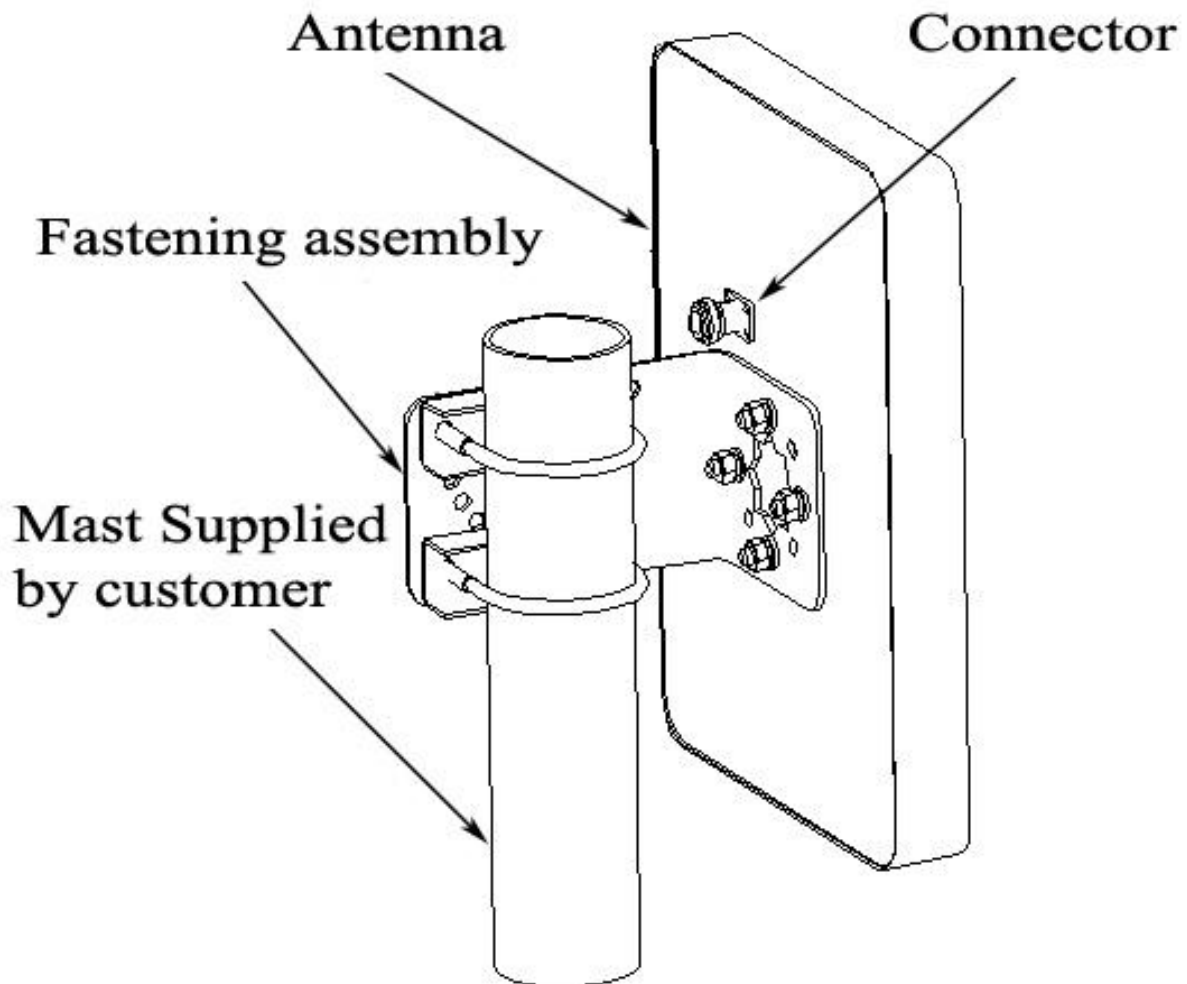
- Model: FTD-5158PB15V60A
- Name: Directional Flat Panel Antenna
- Freq.Range: 5150 to 5850 MHz
- Communications system:  
5.1 to 5.8GHz WLAN/WIFI/ISM/UNII,  
5.1 to 5.8GHz Spread Spectrum Communication
- Application scenario:  
Point to point, Point to multipoint,  
Wireless data and image transmission,  
Outdoor signal directional coverage,  
Public wireless hotspot coverage,  
IEEE802.11a/n

| Electrical Specifications  |              |
|----------------------------|--------------|
| Freq.Range-MHz             | 5150 to 5850 |
| Bandwidth-MHz              | 700          |
| Polarization               | Vertical     |
| Gain-dBi                   | 15           |
| Beam Electrical Downtilt-° | 0            |
| Half-power beam width-°    | H:60 E:15    |
| F/B-dB                     | ≥ 25         |
| Impedance-Ω                | 50           |
| VSWR                       | ≤ 2.0        |
| Max.Power-W                | 50           |
| Lightning Protection       | DC Grounded  |

| Mechanical Specifications  |                        |
|----------------------------|------------------------|
| Connector                  | N female or Customized |
| Connector Position         | Back                   |
| Dimension-MM               | About 172×92×18        |
| Weight-KG                  | About 0.2              |
| Radome material            | ABS                    |
| Radome color               | White                  |
| Mechanical tilt-°          | 0 to 30                |
| Operational Temperature-°C | -40 to 60              |
| Storage Temperature-°C     | -55 to 85              |
| Relative Humidity-%        | 5 to 95                |
| Rated Wind Velocity-M/S    | 60                     |
| Mounting way               | Mast                   |
| Mast Diameter-MM           | Φ35 to 50              |



## Installation Demonstrations



## Typical pattern&Communication channel

