



Directional Flat Panel Antenna



- Model: FTD-5158PB16V20BL
- Name: Directional Flat Panel Antenna
- Freq.Range: 5150 to 5850 MHz
- Communications system:
 - 5.1 to 5.8GHz WLAN/WIFI/ISM/UNII,
 - 5.1 to 5.8GHz Spread Spectrum Communication
- Application scenario:
 - Point to point, Point to multipoint,
 - Wireless data and image transmission,
 - Outdoor signal directional coverage,
 - Public wireless hotspot coverage,
 - IEEE802.11a/n

Tip: Pictures are for reference only.
Please refer to physical objects.

Electrical Specifications

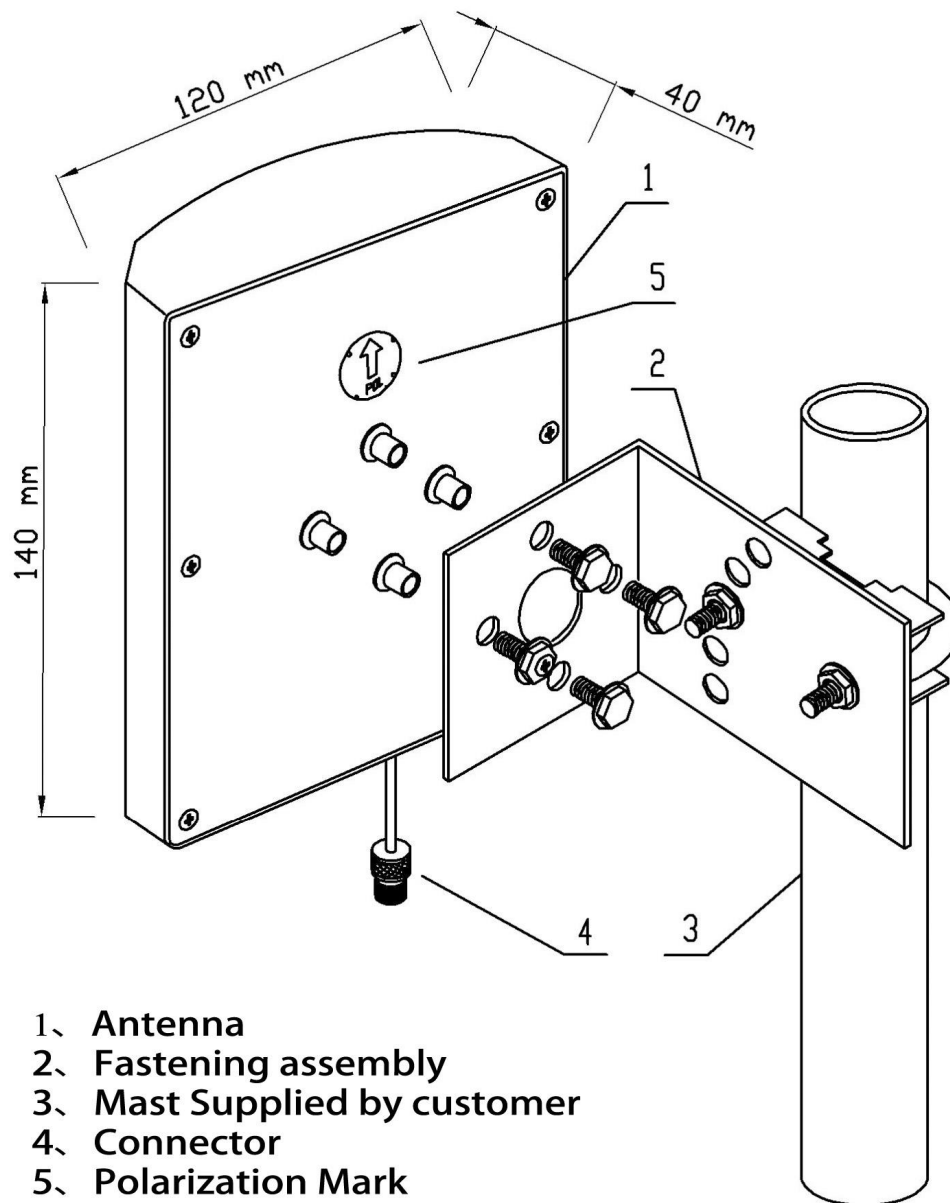
| | |
|----------------------------|--------------|
| Freq.Range-MHz | 5150 to 5850 |
| Bandwidth-MHz | 700 |
| Polarization | Vertical |
| Gain-dBi | 16 |
| Beam Electrical Downtilt-° | 0 |
| Half-power beam width-° | H:20 E:20 |
| F/B-dB | ≥ 25 |
| Impedance-Ω | 50 |
| VSWR | ≤ 1.7 |
| Max.Power-W | 20 |
| Lightning Protection | DC Grounded |

Mechanical Specifications

| | |
|----------------------------|------------------------|
| Connector | N female or Customized |
| Connector Position | Cable outgoing |
| Cable Length-CM | 15CM or Customized |
| Dimension-MM | About 140×120×40 |
| Weight-KG | About 0.5 |
| Radome material | ABS |
| Radome color | White |
| Mechanical tilt-° | 0 to 30 |
| Operational Temperature-°C | -40 to 60 |
| Storage Temperature-°C | -55 to 85 |
| Relative Humidity-% | 5 to 95 |
| Rated Wind Velocity-M/S | 60 |
| Mounting way | Mast |
| Mast Diameter-MM | Φ35 to 50 |



Installation Demonstrations



- 1、 Antenna
- 2、 Fastening assembly
- 3、 Mast Supplied by customer
- 4、 Connector
- 5、 Polarization Mark

Typical pattern&Communication channel

