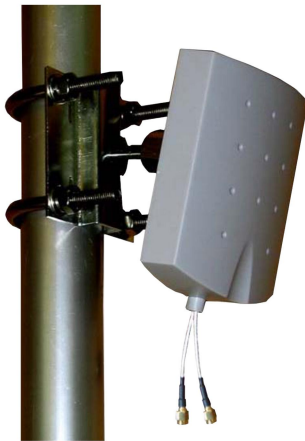




Directional Flat Panel Antenna



- Model: FTD-5158PB09VH60L
- Name: Directional Flat Panel Antenna
- Freq.Range: 5150 to 5850 MHz
- Communications system:
 - 5.1 to 5.8GHz WLAN/WIFI/ISM/UNII,
 - 5.1 to 5.8GHz Spread Spectrum Communication
- Application scenario:
 - Point to point, Point to multipoint,
 - Wireless data and image transmission,
 - Outdoor signal directional coverage,
 - Public wireless hotspot coverage,
 - IEEE802.11a/n

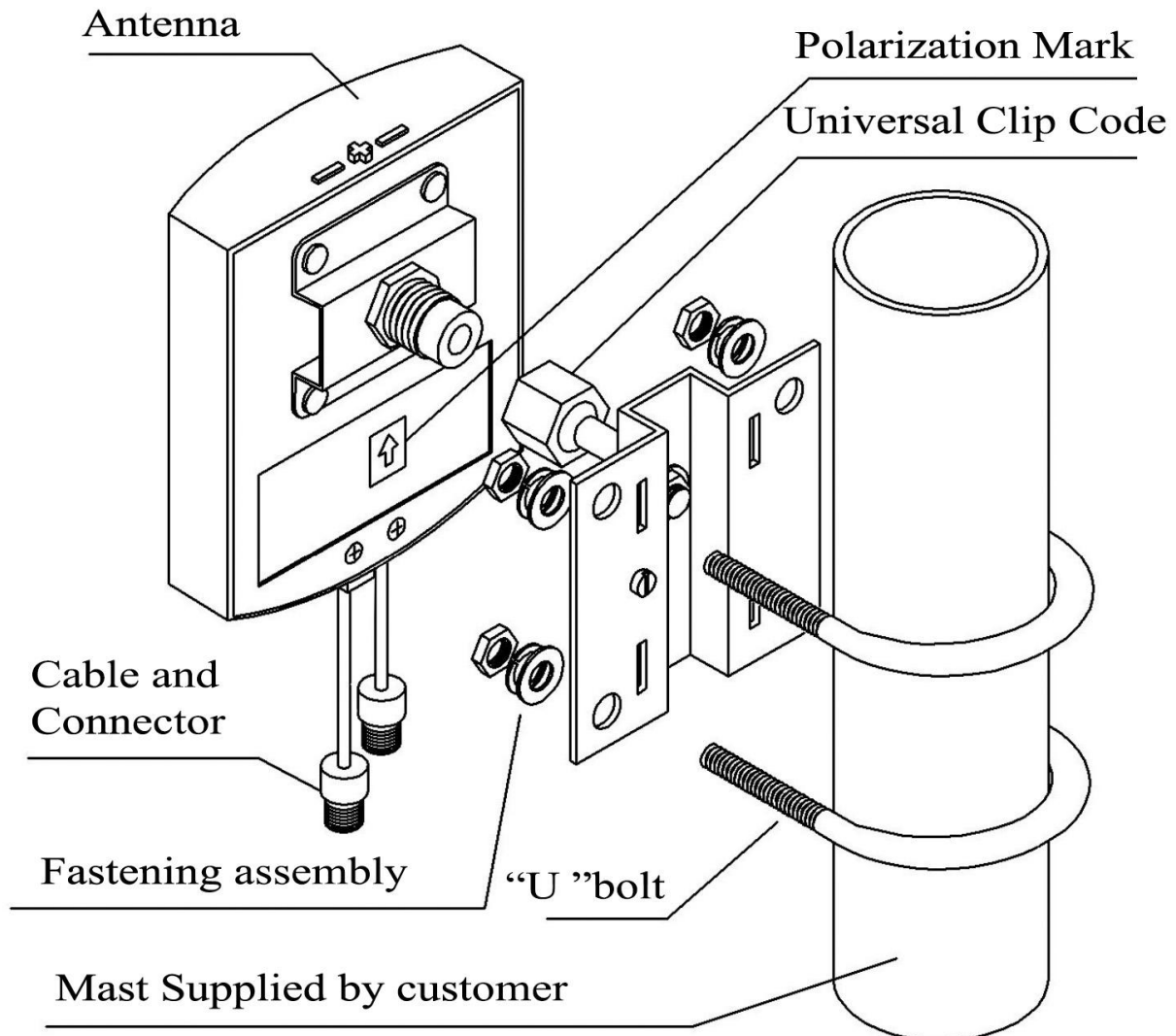
Tip: Pictures are for reference only.
Please refer to physical objects.

Electrical Specifications	
Freq.Range-MHz	5150 to 5850
Bandwidth-MHz	700
Polarization	Vertical and Horizontal
Gain-dBi	9
Beam Electrical Downtilt-°	0
Half-power beam width-°	H:60 E:55
Cross-pol-isolation-dB	≥ 20
F/B-dB	≥ 20
Impedance-Ω	50
VSWR	≤ 1.8
Max.Power-W	50
Lightning Protection	DC Grounded

Mechanical Specifications	
Connector	2×RPSMA female or Customized
Connector Position	Cable outgoing
Cable Length-CM	15CM or Customized
Dimension-MM	About 125×97×30
Weight-KG	About 0.3
Radome material	ABS
Radome color	Gray
Mechanical tilt-°	0 to 20
Operational Temperature-°C	-40 to 60
Storage Temperature-°C	-55 to 85
Relative Humidity-%	5 to 95
Rated Wind Velocity-M/S	60
Mounting way	Mast
Mast Diameter-MM	Φ35 to 50



Installation Demonstrations



Typical pattern & Communication channel

