



## Directional Sector Antenna



Tip: Pictures are for reference only.  
Please refer to physical objects.

- Model: FTD-5158SH16VH90C
- Name: Directional Sector Antenna
- Freq.Range: 5150 to 5850 MHz
- Communications system:
  - 5.1 to 5.8GHz WALN/WIFI/ISM/UNII,
  - 5.1 to 5.8GHz Spread Spectrum Communication
- Application scenario:
  - Point to multipoint, Base station antenna,
  - Outdoor signal directional coverage,
  - Wireless data and image transmission,
  - Public wireless hotspot coverage,
  - Bridging antenna, IEEE802.11a/n

### Electrical Specifications

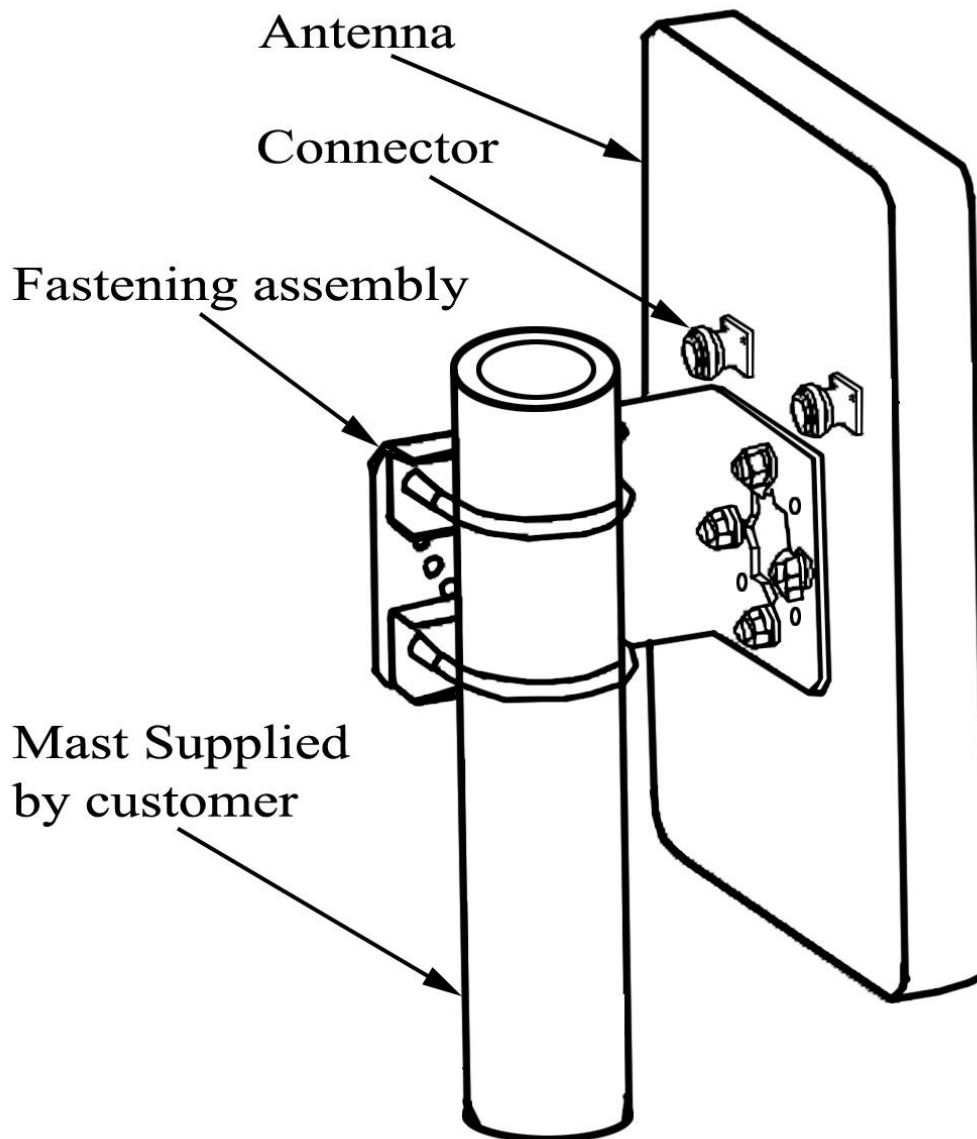
Freq.Range-MHz	5150 to 5850
Bandwidth-MHz	700
Polarization	Vertical and Horizontal
Gain-dBi	2×16
Beam Electrical Downtilt-°	0
Half-power beam width-°	H:90 E:8
Cross-pol-isolation-dB	≥ 28
F/B-dB	≥ 25
Impedance-Ω	50
VSWR	≤ 2.0
Max.Power-W	50
Lightning Protection	DC Grounded

### Mechanical Specifications

Connector	2×N female
Connector Position	Back
Dimension-MM	About 450×140×30
Weight-KG	About 1.2
Radome material	ABS
Radome color	White
Mechanical tilt-°	0 to 15
Operational Temperature-°C	-40 to 60
Storage Temperature-°C	-55 to 85
Relative Humidity-%	5 to 95
Rated Wind Velocity-M/S	60
Mounting way	Mast
Mast Diameter-MM	Φ35 to 50



## Installation Demonstrations



## Typical pattern & Communication channel

