



Directional Sector Antenna



Tip: Pictures are for reference only.
Please refer to physical objects.

- Model: FTD-5158SH18VH90B
- Name: Directional Sector Antenna
- Freq.Range: 5150 to 5850 MHz
- Communications system:
 - 5.1 to 5.8GHz WALN/WIFI/ISM/UNII,
 - 5.1 to 5.8GHz Spread Spectrum Communication
- Application scenario:
 - Point to multipoint, Base station antenna,
 - Outdoor signal directional coverage,
 - Wireless data and image transmission,
 - Public wireless hotspot coverage,
 - Bridging antenna, IEEE802.11a/n

Electrical Specifications

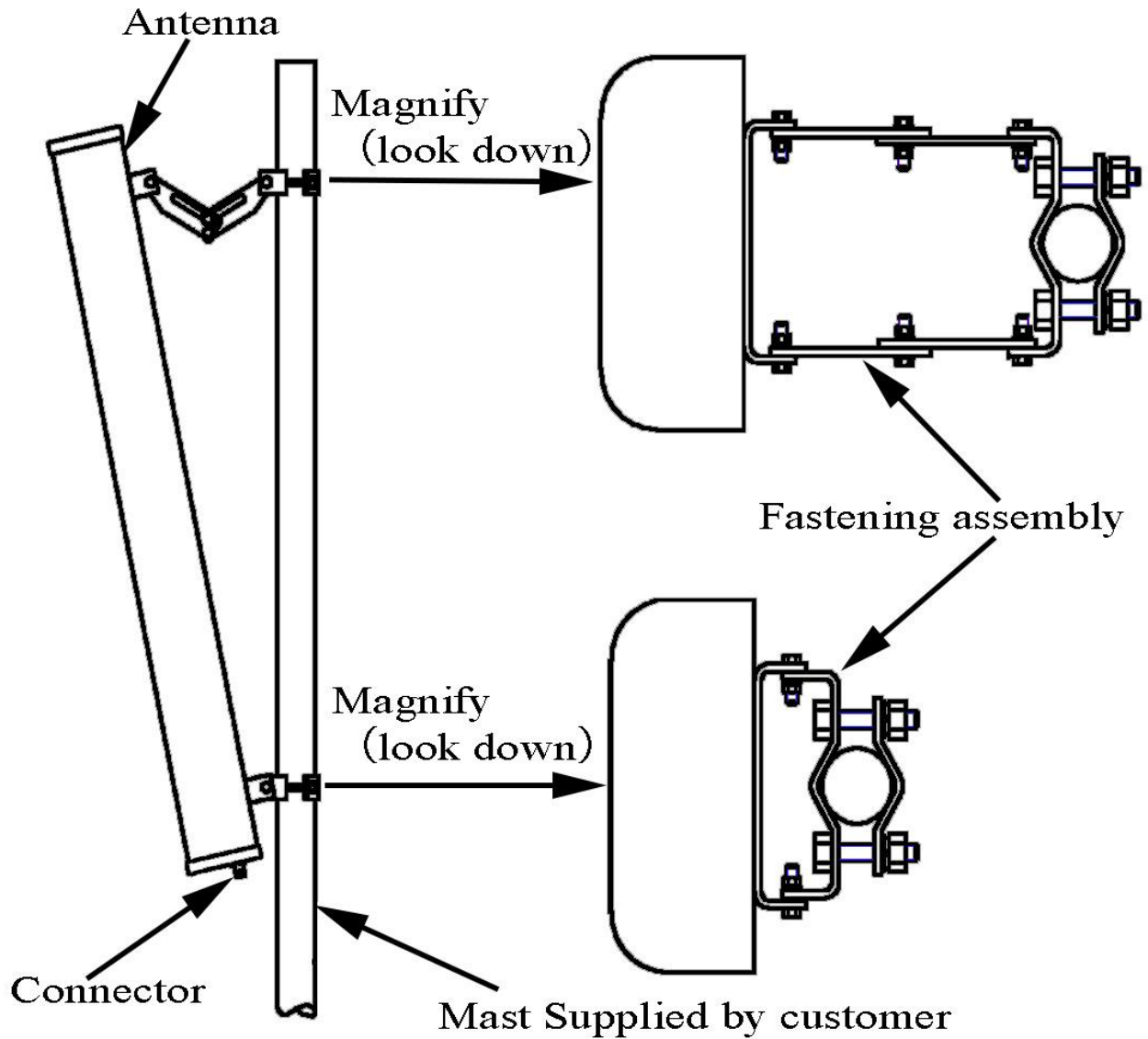
| | |
|----------------------------|-------------------------|
| Freq.Range-MHz | 5150 to 5850 |
| Bandwidth-MHz | 700 |
| Polarization | Vertical and Horizontal |
| Gain-dBi | 2×18 |
| Beam Electrical Downtilt-° | 0 |
| Half-power beam width-° | H:90 E:4 |
| Cross-pol-isolation-dB | ≥ 28 |
| F/B-dB | ≥ 20 |
| Impedance-Ω | 50 |
| VSWR | ≤ 2.0 |
| Max.Power-W | 50 |
| Lightning Protection | DC Grounded |

Mechanical Specifications

| | |
|----------------------------|------------------|
| Connector | 2×N female |
| Connector Position | Bottom |
| Dimension-MM | About 760×180×60 |
| Weight-KG | About 3 |
| Radome material | UPVC |
| Radome color | Gray |
| Mechanical tilt-° | 0 to 12 |
| Operational Temperature-°C | -40 to 60 |
| Storage Temperature-°C | -55 to 85 |
| Relative Humidity-% | 5 to 95 |
| Rated Wind Velocity-M/S | 60 |
| Mounting way | Mast |
| Mast Diameter-MM | Φ35 to 75 |



Installation Demonstrations



Typical pattern & Communication channel

