



Directional Sector Antenna



Tip: Pictures are for reference only.
Please refer to physical objects.

- Model: FTD-5965SH16VH90C
- Name: Directional Sector Antenna
- Freq.Range: 5900 to 6500 MHz
- Communications system:
 - 5.9 to 6.5GHz WALN/WIFI/ISM/UNII,
 - 5.9 to 6.5GHz Spread Spectrum Communication
- Application scenario:
 - Point to point, Point to multipoint,
 - Outdoor signal directional coverage,
 - Wireless data and image transmission,
 - Public wireless hotspot coverage,
 - Wireless bridging, Bridging antenna

Electrical Specifications

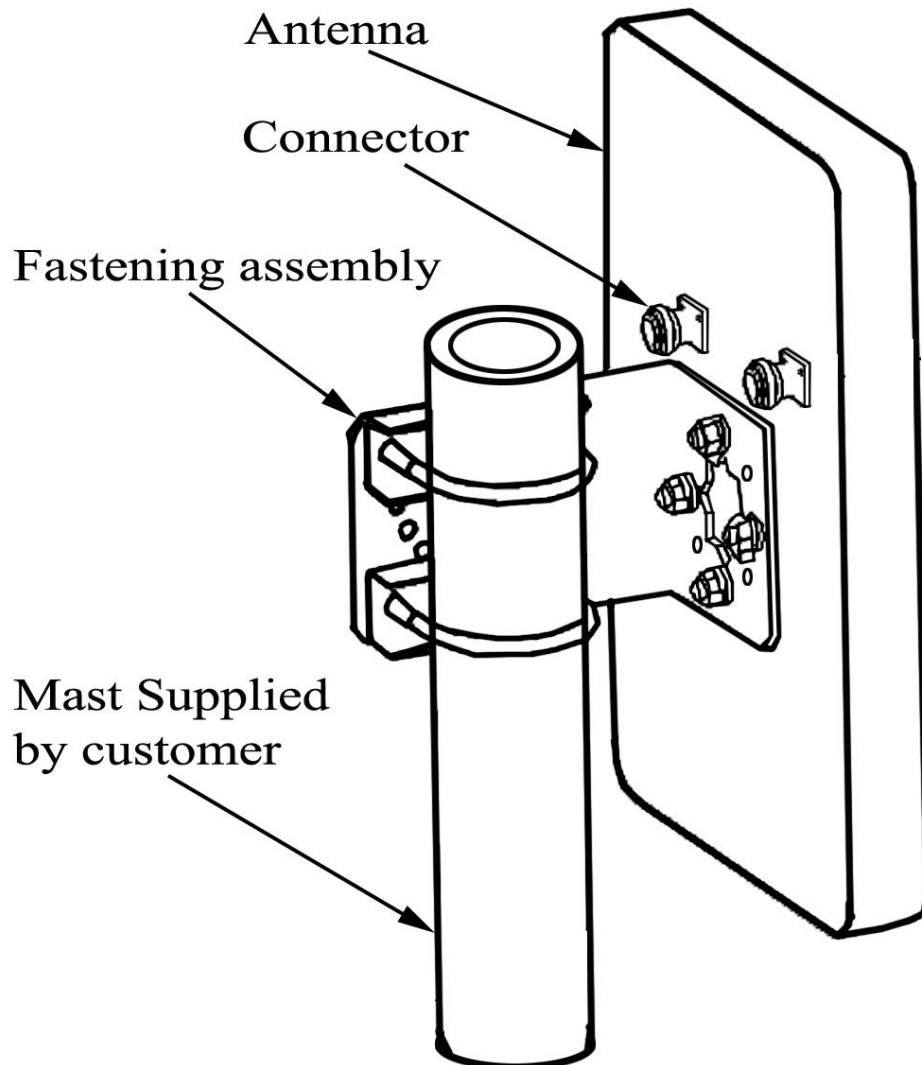
Freq.Range-MHz	5900 to 6500
Bandwidth-MHz	600
Polarization	Vertical and Horizontal
Gain-dBi	2×16
Beam Electrical Downtilt-°	0
Half-power beam width-°	H:90 E:8
Cross-pol-isolation-dB	≥ 28
F/B-dB	≥ 20
Impedance-Ω	50
VSWR	≤ 2.0
Max.Power-W	50
Lightning Protection	DC Grounded

Mechanical Specifications

Connector	2×N female
Connector Position	Back
Dimension-MM	About 450×140×30
Weight-KG	About 1.2
Radome material	ABS
Radome color	White
Mechanical tilt-°	0 to 15
Operational Temperature-°C	-40 to 60
Storage Temperature-°C	-55 to 85
Relative Humidity-%	5 to 95
Rated Wind Velocity-M/S	60
Mounting way	Mast
Mast Diameter-MM	Φ35 to 50



Installation Demonstrations



Typical pattern

